



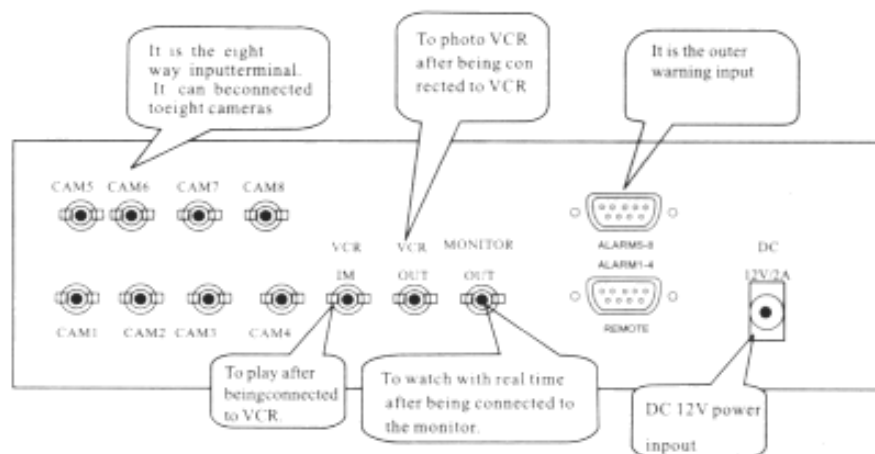
---

# Color QUAD System

---

**MUX-802C**

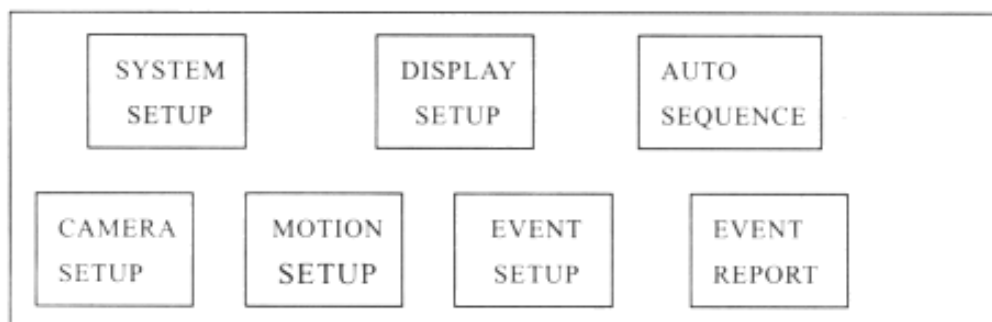
*User's Manual*



#### IV、MENU

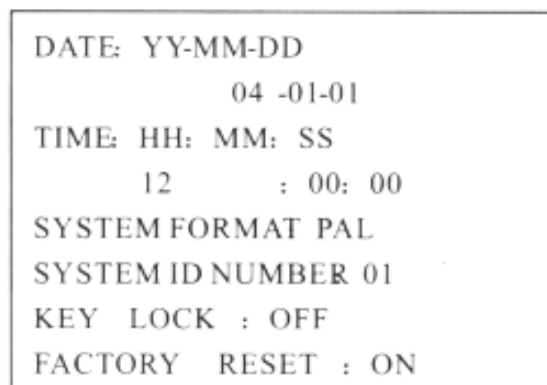
The steps: Under any mode in the sport ,press the MENU for a long time and you can enter to the main, menu.

1.Menu setting and modifying ways: press MENU and enter the main menu and press “ $\nabla \Delta$ ” to move the cursor to the selected items. Press ENTER key to enter confirm and press “ $\nabla \Delta$ ” to move horizontally. Press “ $\triangleleft \triangleright$ ” key is increase and decrease value.



#### 4.1 SYSTEM SETUP

In the main mode use “ $\nabla \Delta$ ” and select “SYSTEM” and press “ENTER key to enter setting item



① **DATE** is date ,year, month, day setting ;**TIME** is hour, minutes and seconds setting

②**SYSTEM** is the pattern setting of NTSC and PAL.

③**KEY LOCK** is lock of the front panel keys

④**FACTORY RESET**:it is the factories

Note:set the NO to YES and press ENTER

Confirm and select YES and press ENTER key to confirm and reset

#### 4.2 DISPLAY SETUP

In the main menu mode use “ $\nabla \triangle$ ” key and select PLAY with cursor and press ENTER key to inter the setting item

DISPLAY ON SCREEN	
<input checked="" type="checkbox"/> TITLE	<input checked="" type="checkbox"/> DATE <input checked="" type="checkbox"/> TIME
SCREEN POSITION X	: 0
Y	: 0
BORDER COLOR	
<input checked="" type="radio"/> BLACK	
<input checked="" type="radio"/> GRAY1	
<input checked="" type="radio"/> GRAY2	
<input checked="" type="radio"/> WHITE	
<input checked="" type="radio"/> OFF	

a)TITLE is the title switch of the camera

b)ADTE the date switch

c)TIME is the time switch

d)SCREEN POSTION are the setting of coordinate division

e)Black is the black color and GRAY1 is gray and GRAY2 is off white.

OFF is division switch.

#### 4.3 AUTO SEQUENCE

Under the main menu “ $\nabla \triangle$ ” key to select AUTO and press ENTER key to enter the setting item.

PAGE A QUAD:	01	SEC
CAMERA1:	01	SEC
CAMERA2 :	01	SEC
CAMERA3 :	01	SEC
CAMERA4 :	01	SEC
RAGEB QUAD:	01	SEC
CAMERA1 :	01	SEC
CAMERA2 :	01	SEC
CAMERA3 :	01	SEC
CAMERA4 :	01	SEC

- a)PAGEA means the channel shift time of QUADA and CAM1-CAM4 pictures.
- b)PAGE B means the channel shift time of QUAD and CAM5-CAM8pictures.

#### 4.4 CAMERA SETUP

Use the “ ∇ △ ” key to select CAMERA SETUP and press “ENTER” to enter setting item

CAMERA 1	
TITLE	: CAMERAO1
BRIGHTNESS	: 0
CONTRAST	: 0
SATURATION	: 0
HUE	: 0
SHARPNESS	: 0
MIRRORING	: OFF

“TITLE” means the title setting mode .Press “ ∇ △ ” and the front box will appear. You can change the title according to the word in the box. BRIGHTNESS CONTRAST SATURTION HUE SHARPNESS are adjustable brightness, contrast ,hue and sharpness. MIRRORING is the photo setting mode. When the setting is selected to be ON, the input signal will be displayed in with contrast displayed in with contrast direction , The default setting is OFF. Press MENU to exit.

#### 4.5 MOTION SETUP

In the main menu mode ,use “ ∇ △ ” to select MOTION SETUP and press ENTER to enter the setting item.

CAMERA : 1	
DETECTION	TIME
ALWAYS	ON
ON	: 11 : 00
OFF	: 12 : 00
SENSITIVTY	: 0
VELOCITY	0
MASKING	AREA
X	, Y: 00, 00)

- a) "DETECTION TIME " is the switch setting of the detecting time and it is available when the setting is in the state of "ALWAYS ON"
- b) SENSITIVITY means the sensitivity of detection
- c) MASKING AREA means the area coordinate of detecting time.

#### 4.6 EVENT SETUP

In the main menu, use the " ∇ △ " and select EVENT SETUP and press enter key to enter the setting item.

BUZZER/REPORT		CONTROL							
CHANNEL		1	2	3	4	5	6	7	8
ALARM		✓	✓	✓	✓	✓	✓	✓	✓
LOSS		✓	✓	✓	✓	✓	✓	✓	✓
MOTION		■	■	■	■	■	■	■	■
BUZZET	HOLD TIME	: 05 SEC							
REPORT	HOLD TIME	: 30 SEC							
ALARM	POLARITY	: LOW							

- a) ALARM LOSS MOTION extended warning ,video loss, and moving detection open/close setting
- b) BUZZER HOLD TIME means the extend time of the recorded events
- c) REPORT HOLD TIME means the extended time of the recorded events
- d) ALARM PLARITY is the high and low voltage, setting of the buzzer

#### 4.7 EVENTREPORT

In the main menu, use " ∇ △ " key and select EVENT REPORT and press EVENT REPORT and press ENTER to go to the setting item.

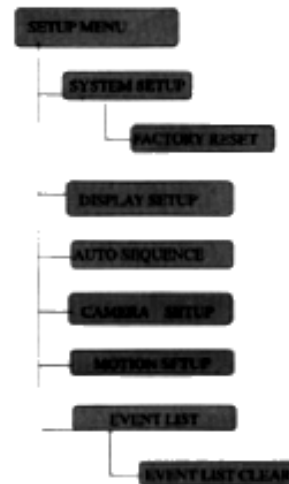
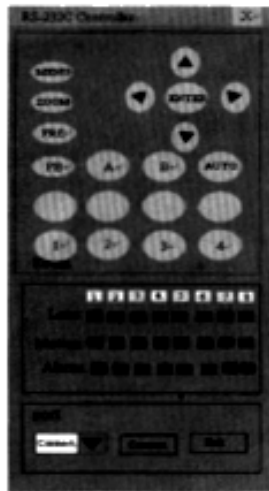
1/6 PAGE				
NO	DD-MM-YY	HH: MM: SS	CH	EVENT
01				
10				
LIST		CLEAR: NO		

## V. Remote controller operation

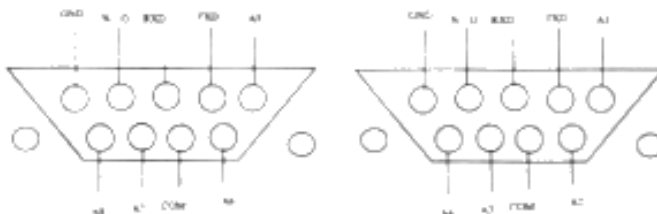
The system provides two remote controllers, RS-232 interface and infrared transmitter. The following control panel is used for both remote controllers. The operating method for both controllers is described in this section. The detail RS-232C protocol will be explained the RS-232C Interface section.

### Setup Menu Operation

The system provides a built in GUI setup screen. For each menu, the key function is described in the lower region to help operation. The following figure shows the structure of GUI menu.



### Alarm Operation



This system accepts up to 8 alarm inputs and provides alarm output with COMMON signal.

A1-A8: Alarm inputs GND: Ground from the sensors

N.O: NORMAL Open alarm output

COM: COMMON alarm output

## VI:TECHNIC SPECIFICATIONS

VIDEO STANDARD	PAL: 50fields/sec NTSC: 60 fields/sec
Definition	PAL: 720X576 NTSC: 720X480
Video input	1. 0V <sub>p-p</sub> 75 ohm input
Tape input	1. 0V <sub>p-p</sub> 75 ohm input
Tape out	1. 0V <sub>p-p</sub> 75 ohm output
Alarm mode	Video lost warning ,touch and start mode,moving detection warning
Video input mode	Full screen,electronic amplifying ,eight pictures,four pictures,PIP and automatic
Working voltage	DC12V/1A
Environmental temperture	-30 <sup>0</sup> C-60 <sup>0</sup> C