



IPM-401S

User Manual



Table of Contents

<u>1.) WELCOME</u>	5
INTRODUCTION.....	5
MINIMUM SYSTEM REQUIREMENTS.....	5
<u>2.) PRODUCT OVERVIEW</u>	6
FEATURES.....	6
SPECIFICATION.....	6
PACKAGE CONTENTS	7
<u>3.) INTERFACE DESCRIPTION</u>	9
HARDWARE INTERFACE	9
<u>4.) SETTING UP YOUR DEVICE</u>	10
BEFORE WE START	10
SETUP FOR INTERNET ACCESS	10
IPM-401S QUICK INSTALLATION	11
USING IP EDIT	12
USING IP SERVICE	14
<u>5.) WEB INTERFACE</u>	16
POWER CONTROLS	17
POWER CONTROL	17
CURRENT VALUE, CURRENT LIMIT SETTING & TEMPERATURE VALUE.....	18
SCHEDULER.....	20
PING SETTINGS	21
SETUP	23
SYSTEM	24
DDNS.....	26
E-MAIL	27
CHANGE PASSWORD.....	28
WAKE ON LAN	28
IP SERVER CONFIGURATION	29
TIME.....	29
LOGOUT.....	30
<u>6.) CONTROLLING THE DEVICE</u>	30
CGI HTTP COMMANDS	30
A.) SET POWER COMMAND.....	31
B.) READ POWER COMMAND	31

C.) POWER DELAY	31
D.) READ SCHEDULE.....	32
E.) SETUP SCHEDULE	32
F.) READ CURRENT VALUE	33
TELNET COMMANDS	33
<u>7.) FREQUENTLY ASKED QUESTIONS (F.A.Q)</u>	<u>35</u>

1.) Welcome

Introduction

The **IPM-401S** is an industrial grade 4 ports output remote power management through an Ethernet connection. This device can easily cooperate integrate with other devices and allow power control with your integrated system. And also control each output through each button locally.

It can **Detect consume current** and control their pocket and with higher safety designs like **Dual Cut Relay** , **Power leakage protection** and **zero cross circuit** which make **IPM-401S** the most safety & friendly IP Power solution.

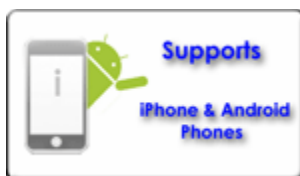
With the **IPM-401S** robust design and high quality components it provides an added incentive to other devices or can be used independently. The **IPM-401S** brings an economical solution to a professional industry power , human resource and time.



Minimum System Requirements

Operating Systems:

- Windows Operating Systems
- Web Browser : IE, Firefox , Google Chrome
- 10/100m Ethernet switch/hub
- Ethernet network port/card
- Internet (For remote access) or Ethernet Network (Internal Network use) with some type of Internet connection, (i.e. ADSL, Cable, Dial up or any other forms of Internet service)



2.) Product Overview

Features

1. Embedded web server - No PC is required for it to work
2. 4 ports Industrial **Dual Cut Relay** design network controller.
3. Accessible with web browsers - IE , Google Chrome & Firefox.
and also with the browser of smart phone - like iPhone and Android system.
4. Network protocols supported: Http, DDNS, DHCP, Virtual and Dynamic IP.

5. Detect " **total Current** " and " internal **Temperature** "
6. **Power leakage protection- turn off as leakage over 3mA**
7. **Over current Protection** : Auto Turn off all outlets as total current over 10Amp
8. Auto Ping - **Watch Dog** - Ping assigned IP to turn on/off each outlet.
9. **Time Schedule** -- pre-set your planned time to switch on/off
10. **CNT technology** -- Just Plug & Play no need to port forward

11. Designed for **light control** : **Like for T5 light Tube** - energy savings & increasing brightness
12. **Inrush Current** protection HI - Grade relay select for extra protection
13. Supports " **Zero Cross** " to protect relay contacts and to suppress noise generated when the load current rises suddenly .
14. **Power surge protection** design to protect against high voltage power surge.

15. Designed to meet high voltage and current safety standard design and regulation.
16. Wide range of electric Power Module can be used in both 110V & 220V environment
17. **SDK** provided for own software development.

Specification

Power Input:

Specification: 10AMP 18AWG 0.75 x 3C (Standard PC Power Cable)

Power Output :

Maximum current of Each Output: **8A**

Maximum current of Total Output: **10A**

Weight: 990g (without packaging) .

Dimensions: 220 x 130 x 55 mm (L x W x H)

Relay Specification:

Regular Use: Max. 8A / port

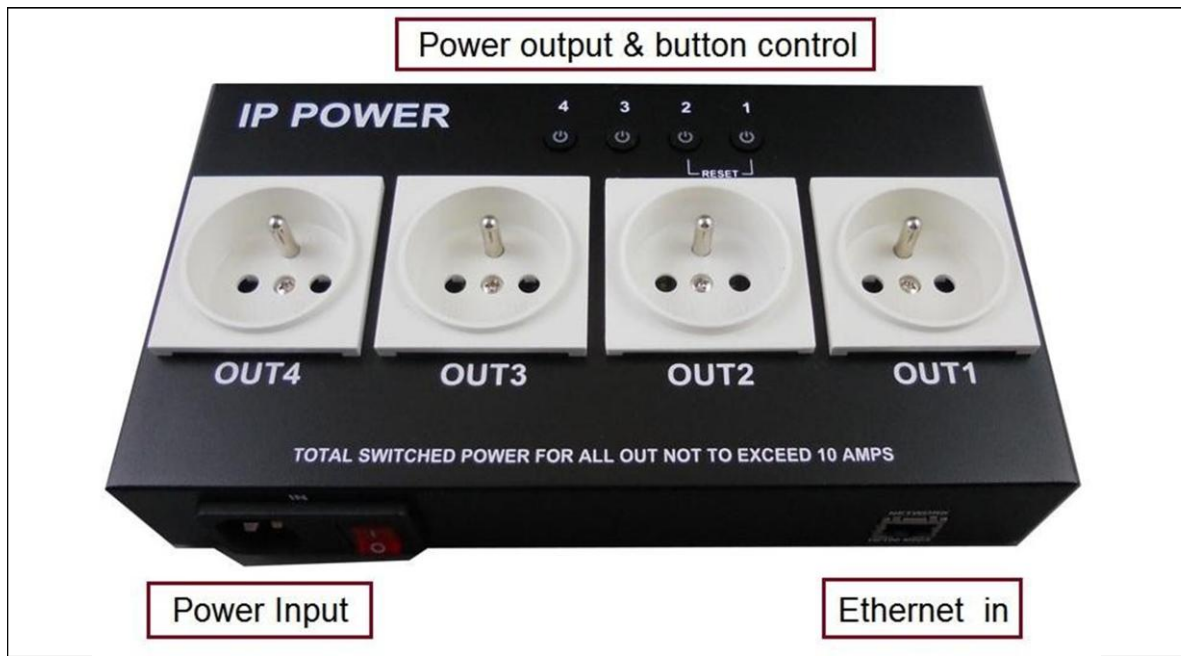
T5 fluorescent light control: 240Watt

Package Contents



<p>IPM-401S Unit x 1</p>	 <p>The image shows the IPM-401S power distribution unit, a black rectangular device with four white outlets labeled OUT4, OUT3, OUT2, and OUT1. Above the outlets are four indicator lights numbered 1 to 4. The top of the unit is labeled 'IP POWER'. A warning label at the bottom reads 'TOTAL SWITCHED POWER FOR ALL OUT NOT TO EXCEED 10 AMPS'.</p>
<p>Installation CD</p>	<p>CD contain manual, software, and documentation</p>
<p>Power Cable (Optional)</p>	<p>Standard PC power cable. Specification: 10AMP 18AWG 0.75 x 3C</p>
<p>Spare Fuse</p>	<p>Spare Fuse in the socket.</p>  <p>The image shows a black fuse holder and a glass fuse. The fuse is cylindrical with metal end caps and a visible filament inside.</p> <p>Fuse type : U/C GFE 10A 250V (PF)</p>
<p>Models with different plugs :</p>	 <p>The image shows the IPM-401S power distribution unit with different plug types installed in the outlets. The unit is black with four white outlets labeled OUT4, OUT3, OUT2, and OUT1. Above the outlets are four indicator lights numbered 1 to 4. The top of the unit is labeled 'IP POWER'. A warning label at the bottom reads 'TOTAL SWITCHED POWER FOR ALL OUT NOT TO EXCEED 10 AMPS'.</p>

3.) Interface Description

Hardware Interface



Power Output	Simply plug & play in the device that you would like to power control. (Comes in different plug standards)
4 Buttons Control	* ON/OFF Control : User can control each output ON/OFF by keep pressing each button for few seconds. The button light is RED as turn off or Blue as turn ON .
Reset	To revert to manufacturer default, please turn off the power input switch then keep hold button #1 & #2 . Switch on the power and wait for a long beep sound then release the button #1 & #2 . After the long beep sound you should log in as default value.
Ethernet port :	Plug in the RJ45 Ethernet cable to the Ethernet port
Power Input:	The Power Input locates on the back of the device. Include On/ Off Switch , plug input and fuse socket : * Plug : For power in. Support 100VAC ~240VAC * Fuse Socket : To prevent damaging from over loading . It comes with fuse and there is one spare fuse in the socket. Fuse type: U/C GFE 10A 250V (PF)

	
Fix Ears (Option)	<p>User can fix IPM-401S on with screws and ear.Notice: The fixed screws SPEC is type M3 and the length of the screw do not over 5mm.</p> 

4.) Setting up your Device

Before we Start

*Before setting up the device make sure of the following:

- 1.) All the package contents are all included if anything is missing please contact the dealer where the device was purchased from.
- 2.) Check that the power input cable is working correctly.
- 3.) Check the cables to make sure there are no problems with the cable.

Setup for Internet Access

To access the IPM-401S from the internet, the router will require port forwarding to be activated for your IP Power device.

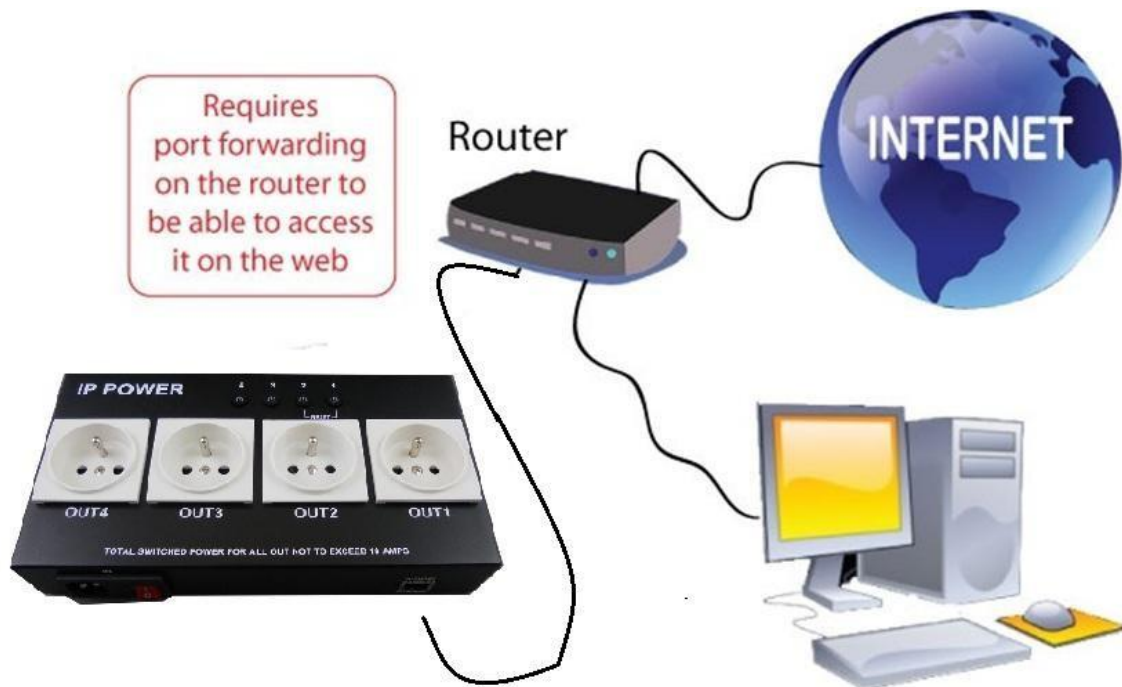
* Please refer to your routers manual on how to port forward the device.

For example

IPM-401S IP Address: 192.168.100.200

Port: 8080

* On the router you will need to port forward both TCP / UDP to the IP Address 192.168.100.200 on Port 8080.



IPM-401S Quick Installation

- 1.) Connect the Ethernet cable (RJ45) to the IPM-401S to your local area network. 2.) Then connect the power cable into the power cable input of the IPM-401S.
- 3.) Connect the device that you would like to control to the output plug on the top of the IPM-401S.
- 4.) Open the IP Edit device search tool from the CD.
- 5.) The device will automatically be set to DHCP and will show on IP Edit. ([Refer to Using IP Edit for more details](#))

- a. If no DHCP is detected the default IP and Login for the device will be the following

Default IP: 192.168.1.100 (When no DHCP is apparent)

Default Login: admin

Default Password: 12345678

- 6.) Then on IP Edit double click on your device and a Internet Explorer window will appear with the login screen.
- 7.) Simply login with the default login and password.
Default Login: admin
Default Password: 12345678

Using IP Edit

IP Edit is a search tool designed to search, configure, or access the IP Power IPM-401S from a local networked computer.

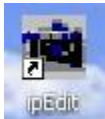
IP Power IPM-401S Default Login / Password

Default IP: 192.168.1.100 (When no DHCP is apparent)

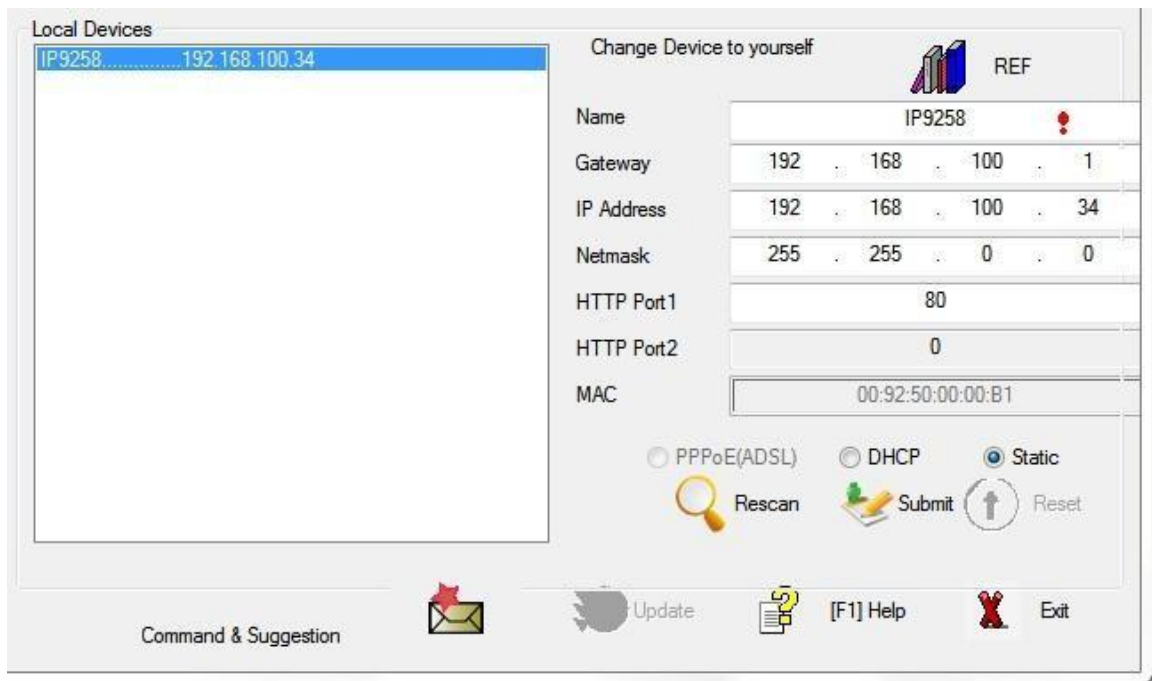
Default Login: admin

Default Password: 12345678

- 1.) Insert the CD provided with the product
- 2.) Install the software IP Edit to the desktop of your computer.
- 3.) Open IP Edit by clicking on the icon



- 4.) In the local devices section you will see your device show up if connected correctly.



- 5.) Select the IPM-401S device and the device information will populate on the right.
- 6.) Check to see that the gateway IP and the IP Address (IPM-401S) match your current network.

If not, type in the correct information, then hit the submit button to save changes.

For example: If you have the following information regarding the IPM-401S and your network

Your PC Network :

Computer IP Address: 192.168.1.122

Gateway: 192.168.1.1

Sub Net mask: 255.255.255.0

Port: 80

Your IPM-401S in IPEDIT :

IPM-401S IP Address: 192.168.100.34

Gateway: 192.168.100.1

Sub Net mask: 255.255.0.0

Port: 80

Since the IP Address of the IPM-401S is : 192.168.100.34

You will need to make sure that the first 3 segments of your IPM-401S IP Address must match the first 3 segments of your gateway IP.

First 3 Segment of Gateway Address: 192.168.1.X

So your new IP Address for the IPM-401S should be: 192.168.1.XXX

New Network Information

IPM-401S IP Address: 192.168.1.26

Gateway Address: 192.168.1.1

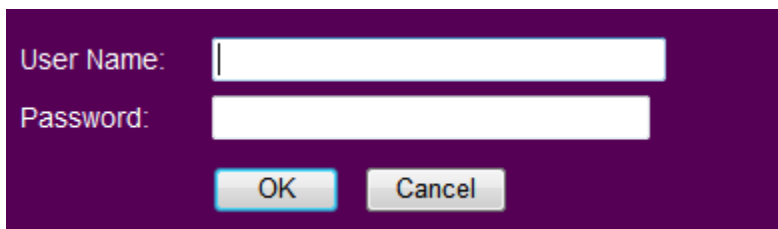
Local Computer IP Address: 192.168.1.122

Sub Net mask: 255.255.255.0

Port: 80

7.) Press the rescan button to see if changes have been made.

8.) Double click on the device in the local device section and an IE web browser with the device login will pop up.



A screenshot of a login dialog box with a dark purple background. It contains two text input fields: "User Name:" and "Password:". Below the fields are two buttons: "OK" and "Cancel".

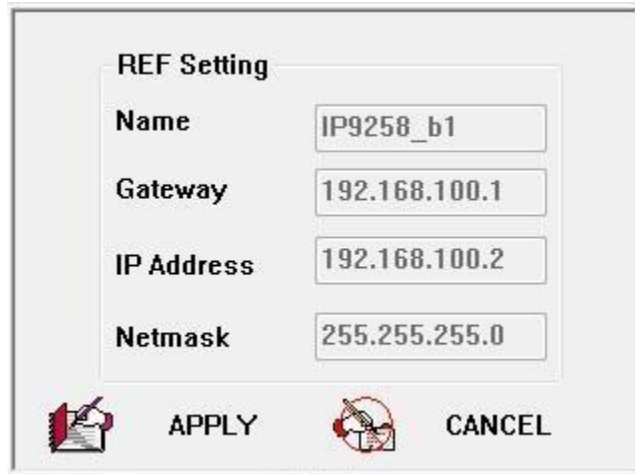
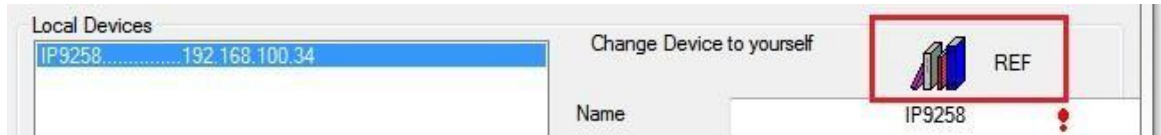
9.) Type in the default login and IP Address to enter the device.

Default Login : admin

Default : 12345678

Notice :

* User can click " REF " in IPEDIT to auto search proper IP setting for IPM-401S .It will take few minutes to show the suggest wizard.



Please click Apply as see the suggest wizard , click " yes " to ignore the remind message of IP in used and then type the username and password to change the IP setting.

Username : admin
Password : 12345678

Using IP Service

IP Service is a feature which allows you to search for the device easily without having to remember long complicated IP addresses. Instead, all you need to know is the device name of your IP Power device and you can easily find it on IP Service.

In the IP IPM-401S under the system configuration page, you can select the IP server that you would like the IPM-401S to go to. You can select from the server or the Cloud Server. This function must be turned on to work.

* IP Power IPM-401S must be port forwarded for IP Service to work correctly.

1.) Open IP Edit and Select the server that your IPM-401S is designated

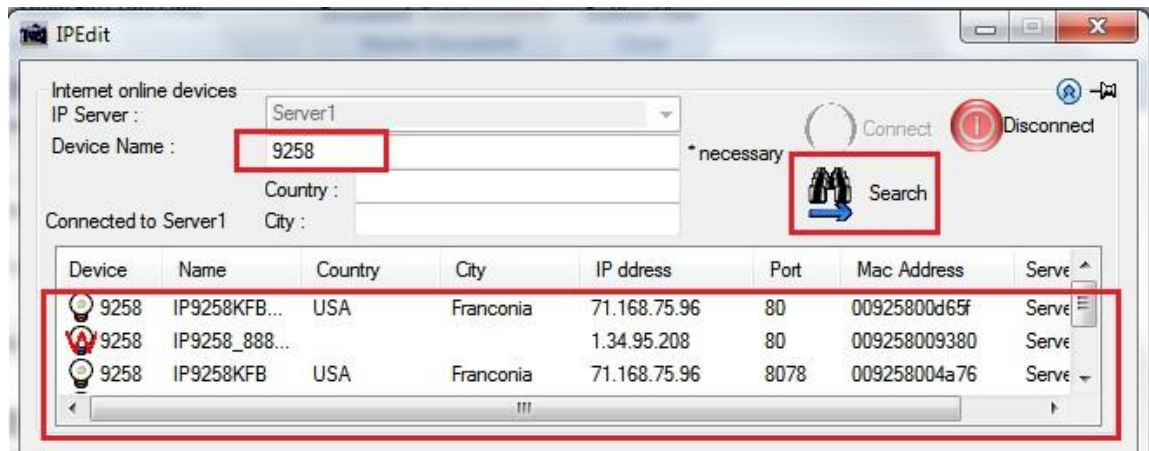
to. 2.) **Hit the green connect button on the top of IPedit.**



3.) Then type in the IPM-401S Name that you have selected for the device and press the search button.

4.) Find your device and double click on the screen and a IE window will pop up connecting to your device.

**Your device must be Port forwarded for the login screen to appear.*



5.) After you have connected to your device, type in the login and password for your device

5.) Web Interface

The web interface on the IP Power **IPM-401S** consists of 5 main sections. Power Controls, Scheduler, Ping , Setup and log out .

The screenshot displays the web interface for the IPM-401S. On the left is a dark purple sidebar with navigation links: Power Controls, Schedule, Ping, Setup, and Logout. The main content area is titled 'I/O Control' and features a table with four columns: Power, Name, Control, and Timer. The table lists four power outlets (Power1 to Power4), each with 'On' and 'Off' radio buttons and a 'Timer' field set to '0'. Below the table is an 'Apply' button. The second section is 'Current and Temperature Settings', which includes a 'Current & Temperature Monitor' display. This display shows a 'Current Value' of '0.0 AMP' and a 'Temp Value' of '27 °C'. Below the monitor, there is a 'Current Limit' field set to '255 AMP (Min. 1-9 Max)' with 'Enable' and 'Disable' radio buttons, and another 'Apply' button.

* **Power Controls:** Turn off or Turn on the socket to provide power to the device. and also the current setting & illustration and temperature value

* **Scheduler:** Schedule specific dates or time to active the IP Power **IPM-401S**.

* **Ping Settings:** Watchdog function to make sure your devices are responding normally.

Setup: System Configuration

- **System:** Adjust main settings to device including IP Address, Gateway, Subnet Mask, leakage current and etc.

- **DDNS:** Configure DDNS functionality

- **E-mail:** Setup E-mail information

- **Password:** user can amend the password as number or English character form 1 to 8 characters.

Please **do not use special sign like** : ~ ! @ # \$ % ^ & * ()

- **Wake on Lan:** Wake devices up that support wake on lan

- **IP Service:** Configure IP Service functionality to find devices by name

- **Time:** Setup time and date of device

* **Logout:** Logout of the device

Power Controls

The Power Controls page include power control and current limit setup
Current & Temp. value : show the consume current ampere and internal temperature at Celsius.

I/O Control

Power	Name	Control	Timer
Power1	<input type="text"/>	<input type="radio"/> On <input checked="" type="radio"/> Off	0 <input type="text"/> Sec <input type="radio"/> On <input checked="" type="radio"/> Off
Power2	<input type="text"/>	<input type="radio"/> On <input checked="" type="radio"/> Off	0 <input type="text"/> Sec <input type="radio"/> On <input checked="" type="radio"/> Off
Power3	<input type="text"/>	<input type="radio"/> On <input checked="" type="radio"/> Off	0 <input type="text"/> Sec <input type="radio"/> On <input checked="" type="radio"/> Off
Power4	<input type="text"/>	<input type="radio"/> On <input checked="" type="radio"/> Off	0 <input type="text"/> Sec <input type="radio"/> On <input checked="" type="radio"/> Off

Current and Temperature Settings

Current & Temperature Monitor

Current Value	0.0	AMP	Temp Value	28	C
Current Limit <input type="text" value="9 AMP (Min. 1-9 Max)"/> <input type="radio"/> Enable <input checked="" type="radio"/> Disable					

Power control

It is the panel where the user can directly turn off / on power to the attached device, set timers and name the outlet.

I/O Control

Power	Name	Control	Timer
Power1	<input type="text"/>	<input type="radio"/> On <input checked="" type="radio"/> Off	0 <input type="text"/> Sec <input type="radio"/> On <input checked="" type="radio"/> Off
Power2	<input type="text"/>	<input type="radio"/> On <input checked="" type="radio"/> Off	0 <input type="text"/> Sec <input type="radio"/> On <input checked="" type="radio"/> Off
Power3	<input type="text"/>	<input type="radio"/> On <input checked="" type="radio"/> Off	0 <input type="text"/> Sec <input type="radio"/> On <input checked="" type="radio"/> Off
Power4	<input type="text"/>	<input type="radio"/> On <input checked="" type="radio"/> Off	0 <input type="text"/> Sec <input type="radio"/> On <input checked="" type="radio"/> Off

Name

In the name section the device name can be set. Simply type in a name you would like for the device and hit the apply button. Name does not support special characters (eg. ! *%)

Control

The control section allows the user to directly turn on or turn off the device. Select the control that you would like to execute and hit apply to apply the settings. This will turn the device on or off.

Timer

The timer allows the user to set an amount of time before a control is activated. To do this, simply enter the amount of delay time in seconds you would like the action to occur. Select the On or Off and hit the apply button. When the timer has reached the time set it will execute your command.

For example if Port 1 is on and I would like to turn it off in 30 seconds, the command may look something like the following.

Power	Name	Control	Timer
Power1		<input type="radio"/> On <input checked="" type="radio"/> Off	30 Sec <input checked="" type="radio"/> On <input type="radio"/> Off
Power2		<input type="radio"/> On <input checked="" type="radio"/> Off	0 Sec <input type="radio"/> On <input checked="" type="radio"/> Off
Power3		<input type="radio"/> On <input checked="" type="radio"/> Off	0 Sec <input type="radio"/> On <input checked="" type="radio"/> Off
Power4		<input type="radio"/> On <input checked="" type="radio"/> Off	0 Sec <input type="radio"/> On <input checked="" type="radio"/> Off

* The maximum number of seconds that can be set on the timer of the device is 9999.

Current value, current limit setting & Temperature value

The Current and Temperature settings offers the current consume value , temperature value and current maximum limit setting so the user get the amp connected device consume also set the maximum amp to protect over loading.

Current and Temperature Settings

The screenshot displays the 'Current & Temperature Monitor' interface. It features a purple header bar with the title. Below the header, there are two main display areas: 'Current Value' showing '0.0' in blue and 'AMP' in black, and 'Temp Value' showing '28' with a degree symbol and 'C' below it. At the bottom, there is a 'Current Limit' section with a text input field containing '9 AMP (Min. 1-9 Max)', two radio buttons for 'Enable' and 'Disable' (with 'Disable' selected), and an 'Apply' button.

Current Value : Show the consume ampere of the device connected with **IPM-401S** . The tolerance of the current measurement is plus or minus at 10% degree.

Notice : For safety concern, the way of current detection is Non - Contact design , so the value at low current (under 0.5amp) will be less accurate than at high current.

Temperature Value : Show the internal temperature value at Celsius (C) . working temperature range at $-10^{\circ}\text{C} \sim 50^{\circ}\text{C}$

Current Limit : Configure the maximum ampere of the connected device , if over the limit value , **IPM-401S** will turn off the plug power in 5 seconds as protection. User can set the limit from 1 to 9 amp.

Notice : All the 4 output will turn off automatically as the total consume Amp over 10AMP.

Scheduler

The power schedule offers flexibility so the user can easily schedule events to control the power of the device.

Power Schedule

Power	Date	Time	Repeat	Power ON/OFF
Power1A	2012 - 03 - 01	00 : 00	Disable	<input type="radio"/> ON <input checked="" type="radio"/> OFF
Power1B	2012 - 03 - 01	00 : 00	Just Once	<input type="radio"/> ON <input checked="" type="radio"/> OFF
Power2A	2012 - 03 - 01	00 : 00	Every Days	<input type="radio"/> ON <input checked="" type="radio"/> OFF
Power2B	2012 - 03 - 01	00 : 00	Work Days	<input type="radio"/> ON <input checked="" type="radio"/> OFF
Power3A	2012 - 03 - 01	00 : 00	Weekend	<input type="radio"/> ON <input checked="" type="radio"/> OFF
Power3B	2012 - 03 - 01	00 : 00	Mon.&Thu.	<input type="radio"/> ON <input checked="" type="radio"/> OFF
Power4A	2012 - 03 - 01	00 : 00	Tue.&Fri.	<input type="radio"/> ON <input checked="" type="radio"/> OFF
Power4B	2012 - 03 - 01	00 : 00	Wed.&Sat.	<input type="radio"/> ON <input checked="" type="radio"/> OFF

Date: Enter the date in which the action will occur needs to be set.

Time: Enter the time of the action will occur.

Repeat: Select the frequency of this action.

Just Once (Just one time)

Everyday (Sunday thru Saturday)

Workdays (Monday thru Friday)

Weekend (Saturday, Sunday)

Mon. & Thu. (Monday, Thursday)

Tue. & Fri. (Tuesday, Friday)

Wed. & Sat. (Wednesday, Saturday)

How to use:

If you would like to turn on the device at 8:00AM and turn off the device at 8:00PM, the device may be set in this fashion.

Power Schedule

Power	Date	Time	PARAMETER	Power ON/OFF
	2006 - 06 - 06	08 : 00 : 00	Just Once ▾	<input checked="" type="radio"/> ON <input type="radio"/> OFF
	2006 - 06 - 06	20 : 00 : 00	Just Once ▾	<input type="radio"/> ON <input checked="" type="radio"/> OFF
	2006 - 06 - 06	06 - 06 - 06	Disable ▾	<input type="radio"/> ON <input checked="" type="radio"/> OFF

Ping Settings

The Auto-ping functionality allows the **IPM-401S** to check if the device have malfunctioned or needs to be restarted. If the device is not working correctly the **IPM-401S** Ping will activate the action that you have selected to reinstate the state of the device

Ping Setting

Relay	Enable	Ping IP	Ping Failures	Delay Before Action (Seconds)	Delay After Action (Seconds)	Continue Ping	Action
Power1	DISABLE ▾	192.168.8.67	3	3	3	Continue ▾	ON ▾
Power2	DISABLE ▾	192.168.8.67	3	3	3	Continue ▾	ON ▾
Power3	DISABLE ▾	192.168.8.67	3	3	3	Continue ▾	ON ▾
Power4	DISABLE ▾	192.168.8.67	3	3	3	Continue ▾	ON ▾

Global Setting

Ping Interval:	2	Seconds
Ping EchoWait:	30	Millisecond

Submit

Relay: A description of which on let to use Ping function

Enable: Disable or Enable ping settings

Ping IP : Specify the IP Address to Ping

Ping Failures: The number of ping failures before the Action is activated.

Delay Before Action (Seconds): After the Ping Failures has been reached, you can set the delay time (seconds) before the action is activated.

Some uses of this function would be for systems or computers that require a shut down time

Delay after action (Seconds): The number of seconds it takes the attached devices to startup. Once those devices start, the Startup Action will be activated to **continue pinging or stop pinging**.

Continue Ping: After start up Delay has been reached the start up action will either **Continue Pinging or Stop Pinging**

Action: When the number of Ping Failures have been reached. The device can be set to perform a Off, On, or Reset function.

Ping Interval (Seconds): The number of seconds between each ping

Ping Echo Wait (Milliseconds): The number of milliseconds the device will wait for a response from the pinged device if no ping is detected within this time it will be considered a ping failure.

Please view the example below for more details:

Ping Setting

	1.)	2.)	4.)	5.)	7.)	8.)	6.)
Relay	Enable	Ping IP	Ping Failures	Delay Before Action (Seconds)	Delay After Action (Seconds)	Continue Ping	Action
Power1	ENABLE ▾	www.sample.com	3	3	3	Continue ▾	ON ▾
Power2	ENABLE ▾	www.yahoo.com	3	3	3	Continue ▾	ON ▾
Power3	DISABLE ▾	www.google.com	3	3	3	Continue ▾	ON ▾
Power4	DISABLE ▾	www.facebook.com	3	3	3	Continue ▾	ON ▾
Global Setting							
3.)	Ping Interval:	3	Seconds				
	Ping EchoWait:	3000	Millisecond				
Submit							

In the picture above:

- 1.) **Power 1 Ping** function is **enabled for two websites**
- 2.) The **IPM-401S** will ping the web address www.sample.com & www.google.com
- 3.) If there is a response within the **Ping Echo Wait** the **IPM-401S** will send another ping signal the set **Ping Interval** which is 3 seconds for this example.
- 4.) If the **IPM-401S** does not receive a response from the device it will constitute a **Ping Failures**.
- 5.) After 3 consecutive failure the device will go to the **Action Delay** section. In this case the device will delay for 3 seconds.

- 6.) When action delay has been reached the **Action** will be set off. Here we have set the **IPM-401S** to **Reset** the device.
- 7.) Once the device has been reset the **IPM-401S** will go into **Startup Delay** mode. In this case it is 3 seconds.
- 8.) After the startup delay mode has been reached the **IPM-401S** will check the **Startup Action** whether to continue or stop pinging the device. Here we have it set to Continue.
- 9.) Then the process starts all over.
- 10.) Since the Ping Type is set to or if any of the Ping IP constitute a failure then the action will be committed. If the Ping Type was set to "AND" all conditions must be met for the action to be activated.

Setup

The setup page allows the user to configure the system settings of the **IPM-401S**. This includes network information, IP Server, CNT, CGI commands, and the firmware version.



System

The system section allows you to make changes to the network information of the **IPM-401S**. This includes changes to the IP Address, Gateway, Subnet Mast, and DNS. In additional under the system section you will also find other features including SNMP, Telnet, DHCP, Beeper configuration and more.

SYSTEM

IP Address:	192 . 168 . 100 . 34 . 80
Subnet Mask:	255 . 255 . 0 . 0
Default Gateway:	192 . 168 . 100 . 1
DNS:	168 . 95 . 192 . 1
SNMP	<input type="radio"/> Enable <input checked="" type="radio"/> Disable
TELNET	<input type="radio"/> Enable <input checked="" type="radio"/> Disable
DHCP Client	<input type="radio"/> Enable <input checked="" type="radio"/> Disable
BEEPER	<input checked="" type="radio"/> Enable <input type="radio"/> Disable
Leakage Current	<input checked="" type="radio"/> Shutdown <input type="radio"/> Ignore
Http Command Verification	<input checked="" type="radio"/> Enable <input type="radio"/> Disable
DelaySwitch	0 Sec ▼
Device Name:	IP9258
Release Version:	V4.00 2012/09/17
<input type="button" value="Submit"/> <input type="button" value="Cancel"/>	

IP Address: IP Address of the **IPM-401S** device.

Subnet Mask: The subnet mask information can be populated here.

Default Gateway: Enter the gateway for the router.

DNS: Enter the DNS information here.

Note: Not having the correct DNS information will affect the NTP and SMTP mail server.

SNMP: Enable or Disable SNMP functionality.

Telnet: Enable or Disable Telnet functionality.

DHCP: This will enable or disable the DHCP on the device.

Beeper: This will enable or disable the beep on the device as setting or receive any command.

Leakage:

Set as " Ignore " : IPM-401S ignore if there is leakage in the power circuit and this is our default setting.

Set as " Shutdown " : All the 4 power outputs will turn off if leakage over 3mA in this power circuit environment. This function also help user to check if leakage in this environment . User can disable this function by select " ignore" . You can see alarm message as there is leakage as following pictures: .

I/O Control

Power	Name	Control	Timer
Power1		<input checked="" type="radio"/> On <input type="radio"/> Off	0 Sec <input checked="" type="radio"/> On <input type="radio"/> Off
Power2		<input type="radio"/> On <input checked="" type="radio"/> Off	0 Sec <input type="radio"/> On <input checked="" type="radio"/> Off
Power3		<input type="radio"/> On <input checked="" type="radio"/> Off	0 Sec <input type="radio"/> On <input checked="" type="radio"/> Off
Power4		<input type="radio"/> On <input checked="" type="radio"/> Off	0 Sec <input type="radio"/> On <input checked="" type="radio"/> Off

Current and Temperature Settings

Current & Temperature Monitor

Current Value	Leak	AMP	Temp Value	28	°C
Current Limit	9 AMP (Min.1-9 Max) <input type="radio"/> Enable <input checked="" type="radio"/> Disable				

Http Command Verification : This will enable or disable the http commands for the IPM-401S.

Delay Switch: The Delay switch will delay the device to activate the command to a designated amount of time. If set to 10 seconds after commands during scheduler or http commands are sent there will be a 10 second delay.

Device Name: Select the name for the device here, and this name will be used for registering the device on IP Service.

Firmware: Will provide information on the current firmware for the device

DDNS

The DDNS Setup allows the user to setup the **IPM-401S** with a DDNS server. This way instead of having to remember long IP Addresses, the user now can easily use a WWW link to connect to the device. This also is a good solution for users to have a dynamic IP Address where the IP continually changes and is not constant.

Note: We recommend using free services like www.dyndns.com for this portion. The device may react differently to other ddns services.

DDNS SETUP

DDNS:	OFF ▾
Server IP:	204.13.248.109
Domain:	
UserName:	
Password:	
Proxy Settings	
Proxy Server:	OFF ▾
IP Address:	
Port:	0
<input type="button" value="SAVE"/> <input type="button" value="UPDATE"/>	

DDNS Server IP: The DDNS server IP

Domain: Type in the dyndns domain name

Username: Enter the DDNS username here

Password: Enter the DDNS password.

Enable DDNS: When using DDNS make sure that it is enabled.

If user is using a proxy account, you will need to enable it here.

Proxy Enable: Select true or false to enable or disable the proxy server

Proxy IP: The Proxy IP is the IP Address of the Proxy Server

Proxy Port: Enter the port of the proxy server here.

E-mail

This section is where email settings are inputted. After the information is populated the **IPM-401S** will send notifications regarding the device when activated.

*Note: Not all email servers may be compatible with the **IPM-401S**. Please see the FAQ section of the manual for a list of compatible Email providers with correct DNS information .*

Setup Email

MailServer:	sample.com
Port:	25
Pop3Server:	sample.com
User Name:	login@sample.com
Password:	●●●●●●
Sender:	login@sample.com
Receiver1:	login@sample.com
Receiver2:	
Receiver3:	
Subject:	IP Power 9258
Body:	mail bosy IP POWER
<input type="button" value="Save"/> <input type="button" value="Send"/>	

Mail Server: Enter the mail server of email that you are using

Port: Enter the port of the mail server

Pop3 Server: Enter the pop3 server name

User Name: Enter a valid username for the email server

Password: Enter a password (**Maximum 8 digits**)

Sender: Enter the sender email address

Receiver 1, 2, 3: Enter the receiver email address

Subject: Enter a subject line for the email so that the received would be able to identify the email

Mail Body: Enter the information that is in the body of the device

Change Password

The change password function, will allow the user to change the current password of the device.

Change Password

Old Password:		<input type="text"/>
New Password:		<input type="text"/>
Confirm New Password:		<input type="text"/>
		<input type="submit" value="Submit"/>

Changing the password of the device:

- 1.) Type in the old password for the device
- 2.) Then type in the new password maximum of 8 characters
- 3.) Repeat the new password again
- 4.) Then hit the submit button.

The login required option allows the user to choose whether they would like to disable login capabilities for the device.

Wake on Lan

The network wake up function allows the IPM-401S to wake up computers, servers or systems that have a "wake on lan" capability. This functionality is not available on all PC's and requires the motherboard or Ethernet card to have Wake on Lan support for this functionality to work correctly.

WAKE ON LAN

MAC:		<input type="text" value="FFFFFFFFFFFF"/>
		<input type="button" value="Save"/> <input type="button" value="Send"/>

Simply just type in the Mac address of the system that you would like to start up and hit the send button and the device will be activated.

IP Server Configuration

The IP Server Configuration page is where the **IPM-401S** can be configured to connect to IP service.

IP Service

Country:	<input type="text"/>
City:	<input type="text"/>
CNT ON/OFF:	OFF ▾ Server1 ▾
IPsrv ON/OFF:	OFF ▾
IPsrv ServerAdr:	1 . 34 . 90 . 57
<input type="button" value="Save"/> <input type="button" value="Cancel"/>	

IP service allows you to easily find your device of the web or of the google cloud server without the need to remember long IP Addresses. Instead you can find your device easily just by searching with the name of your device.

Time

The date and time settings allow the user to synchronize the **IPM-401S** with their local time or a NTP server.

Date / Time

Date / Time: (yyyy-mm-dd HH:MM:SS)						
2012	-	10	-	5	6	: 41 : 29
NTP Server IP Address:						
192	.	43	.	244	.	18 TimeZone: 0
<input type="button" value="SAVE"/> <input type="button" value="NTP"/> <input type="button" value="Local-Time"/>						

NTP: Network Time Protocol can be entered into the **IPM-401S**. Simply just enter the IP Address of the NTP Server and hit the NTP button to synchronize. Then press save .

* For NTP to work correctly the DNS server must be configured correctly on your [System configuration page](#)

Local Time: The local time gets the time of the PC that is currently being used.

Logout

Click on the Logout link after you finish each session of using the IP Power **IPM-401S**. This will ensure that any other person that uses the device next will not be able to control the devices without logging in.

6.) Controlling the Device

CGI HTTP Commands

Http commands allow you to control the device with commands. The basic commands are provided below.

There are two ways to input http commands with authorization required

Password in http: for Browser IE 7.0 or below

http://login:password@ipaddress:port/command

Password not in http: for Browser IE 7.0 and higher

http://ipaddress:port/ user=admin+pass=12345678+command

Note: If you use the password not in http: command you will need to enter it when the browser asks for the password.

a.) Set Power Command

The Set Power command allows you to control the devices on/off through the http commands. With this command you can integrate can integrate the IPM-401S with any other system.

Command format:

<http://ip:port/set.cmd?cmd=setpower+p61=1+p62=0+p63=1+p64=1>

Outlet	Power On	Power Off
Output 1	61 = 1	61 = 0
Output 2	62 = 1	62 = 0
Output 3	63 = 1	63 = 0
Output 4	64 = 1	64 = 0

Ex. For 4 Ports Control On / Off

<http://192.168.1.3/set.cmd?cmd=setpower+p61=1+p62=0+p63=1+p64=1>

Output: p61=1 p62=0 p63=1 p64=1

Ex. For Single Port Control Off

<http://192.168.1.3/set.cmd?cmd=setpower+p61=0>

Output:P61=0

b.) Read Power Command

1. Set Port On/Off

<http://192.168.1.3/set.cmd?cmd=setpower+p61=1> (relay open) ,
setpower+p61=0(relay closed)

P61=1

2. Read Port

<http://192.168.1.3/set.cmd?cmd=getpower>

P61=1

c.) Power Delay

The Power delay command allows you to delay the set power command.

Command format:

<http://ip:port/set.cmd?cmd=setpower+p6x=?+p6xn=?+t6x=aa>

x means output number : 1 or 2 or 3 or 4

? means on or off : 1 = on , 0 = off

p6xn means 2nd action of output x

t6x=aa means delay aa seconds between the 2 actions

(aa range = 1 - 9999 seconds)

Ex. Turn ON Output #1 for 30 Seconds then turn Off

<http://192.168.1.3/set.cmd?cmd=setpower+p61=1+p61n=0+t61=30>

Ex. Turn ON all 4 ports for 15 Seconds then turn Off

<http://192.168.1.3/set.cmd?cmd=setpower+p61=1+p61n=0+t61=15+p62=1+p62n=0+t62=15+p63=1+p63n=0+t63=15+p64=1+p64n=0+t64=15>

(there is no space between command)

d.) Read Schedule

Command: per command of each schedule status

[http://ip:port/set.cmd?user=admin+pass=12345678+cmd=getschedule+power=xx,](http://ip:port/set.cmd?user=admin+pass=12345678+cmd=getschedule+power=xx)

xx means Schedule item number : 1a, 1b, 2a, 2b, 3a, 3b, 4a, 4b

One command to get one schedule status.

e.) Setup Schedule

Command format: One command to set one schedule status.

<http://ip:port/set.cmd?user=admin+pass=12345678+cmd=setschedule+power=xx+yy=2006+mm=02+dd=16+hh=06+mn=02+ss=16+param=128+onoff=1>

Parameter definition :

xx means Schedule item number : 1a, 1b, 2a, 2b, 3a, 3b, 4a, 4b
yy=2006 (Year 2006)
mm=02 (Month as February)
dd=16 (Date as 16)
hh=06 (Hour as 06:00am)
mn=02 (Minute)
ss=16 (Second)

param=000 disable
param=128 just once
param=255 every days
param=159 work day
param=224 weekend
param=137 mon&thu
param=146 tue&fri
param=164 wed&sat

onoff=0 off
onoff=1 on

f.) Read current value

- <http://ip:port/set.cmd?user=admin+pass=12345678+cmd=getcurrent>

Telnet Commands

The **IPM-401S** supports telnet protocol and can be controlled in a telnet enabled environment.

To Login to the IPM-401S in telnet

1.) Make sure to go to command prompt and type in Telnet and the IP Address of your **IPM-401S** device.



```
G:\>telnet 192.168.1.153
9255NTelnet command shell
Please input username and password!
9255NTelnet-> admin:12345678
```

2.) Then type in the login and password in the following format.
admin:12345678

Telnet Commands

Help: The help command will provide all the commands available on the IPM-401S. To get the commands in help type: help in the telnet protocol.

```
9258Telnet command shell
Please input username and password!
9258Telnet-> admin:12345678
    Username and password is ok!
    Type 'help' and return for help
9258Telnet-> help
Available commands:
    setpower - Set port state
    getpower - Read port status
    getcurrent - Read current value
    gettemp - Read temperature value
    exit - exit shell
9258Telnet-> _
```

Set power: The set power command allows the device to turn on and turn off ports on the device. To set power on the device type

```
9255Telnet-> setpower p61=0
Power Status : 0
9255Telnet-> setpower p61=1
Power Status : 1
```

setpower p61=1: Port On

setpower p61=0: Port Off

Get power: The get power command gives you the current status of the device. To get power on the device type: 1 mean power on , 0 mean power off.

```
9258Telnet-> getcurrent
Current value : 0.0

9258Telnet-> gettemp
Temperature value : 219

9258Telnet-> getpower
Power Status : 0 0 0 0

9258Telnet-> setpower
Ex. setpower p6=0101
9258Telnet-> _
```

Notice:

The above information is for IPM-401S (with current meter) only . Not for other IP Power series.

7.) Frequently Asked Questions (F.A.Q)

Q1: Which email providers are compatible with the **IPM-401S**?

Ans: If you are having problems getting your email address to work, we recommend try using the following email providers for the **IPM-401S** .

lavabit.com

POP3: lavabit.com

port: 110

SMTP: lavabit.com

port: 25

inbox.com

POP3: my.inbox.com

port: 110

SMTP: my.inbox.com

port:25

gawab.com

POP3: ppop.gawab.com

port: 995

SMTP: psmtg.gawab.com

port: 465

gmx.com

POP3: pop.gmx.com

port: 110

SMTP: mail.gmx.com

port: 25

Q2: Why can I not find my device in IP edit?

Ans: Please make sure to turn off any antivirus, firewall, and messaging software, that may be blocking the device. Then re-open IP Edit and hit the rescan button.

Q3: What can I do if I forget my password?

Ans:

a.) In the login field enter the “super user”: do not enter the quotation marks and there is a space between super and user

b.) Then make sure to power off the device within 60 seconds, by unplugging the device and then plugging it back in.

c.) Then login to the device with the default login and password

Default Login: admin

Default Password: 12345678

Q4: How to I revert back to Manufacturers default settings?

Ans: Hold the reset button for at least 5-7 seconds and you will hear two long beeping sound. Then use IP Edit to re-setup the device.

Default IP: 192.168.1.100 (When no DHCP is apparent)

Default Login: admin

Default Password: 12345678