

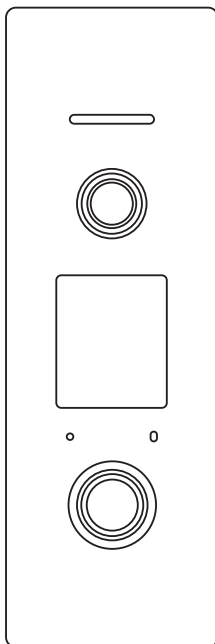
2 WIRE IP SYSTEM

DPC-D2D17F-ID

Fisheye door station with proximity access control



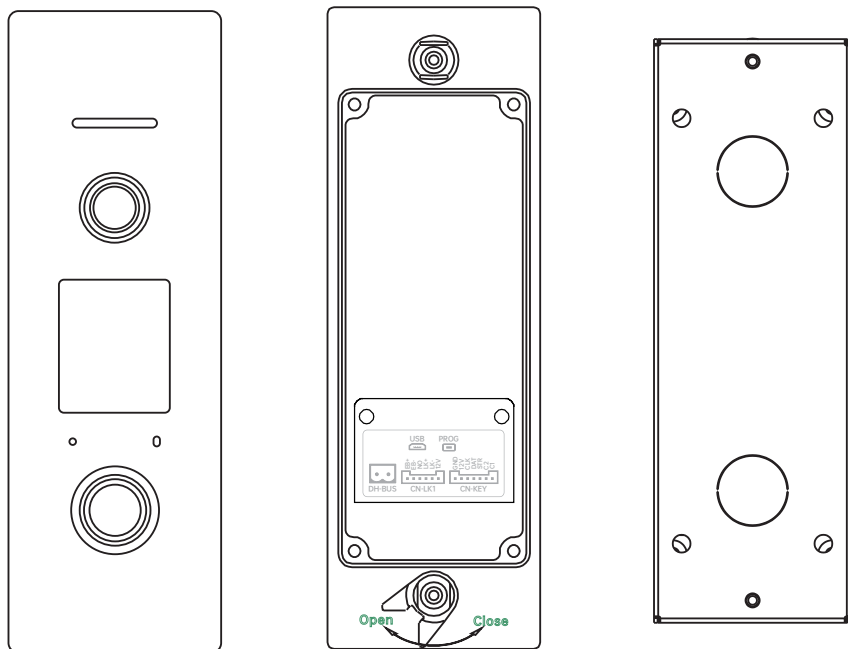
USER MANUAL



- Please read this manual carefully to ensure safe and correct operation.
- Keep this manual well for future reference.

PARTS AND FUNCTIONS

Part Names



[1] Night view LED

[2] UNLOCK indicator

[3] CALL indicator

[4] Call button

[5] Microphone

[6] Front panel

[7] Nameplate

[8] Speaker

[9] Camera lens

[10] Rainy cover

[11] Mounting hook

[12] Connection port

[13] Screw hole

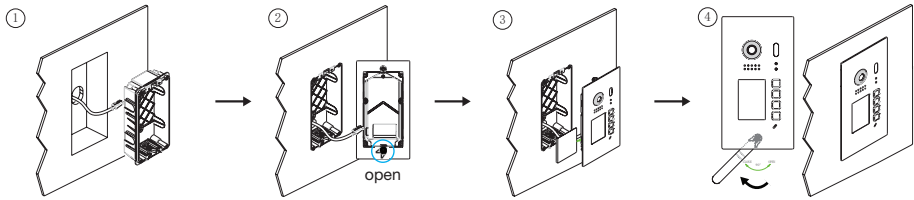
[14] Mounting box

BASIC FUNCTIONS

Mounting

The installation height is suggested to 145~160cm.

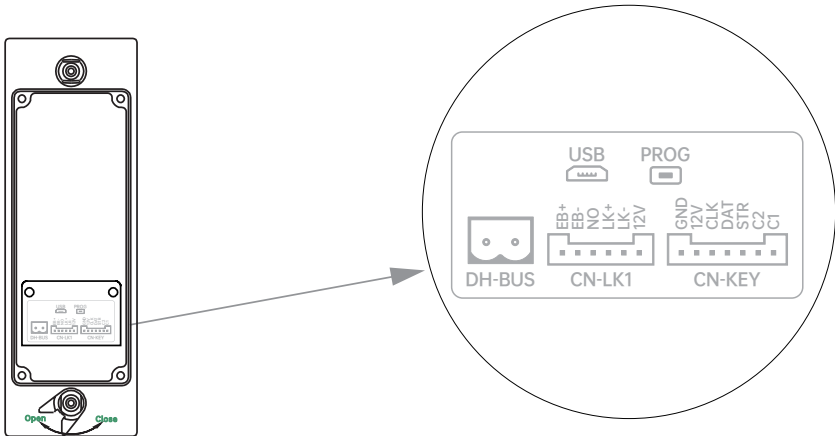
Flush mount



1. Drill a hole in the wall to match the size of the mounting box and attach to the wall.
2. Connect the cable correctly and make sure ratchet bolt on the bottom is in "Open" position.
3. Replace the nameplate if needed, install the panel to the mount box.
4. Make sure the install is firmly, and use the wrench tool to locking the ratchet to "Close" position.

BASIC FUNCTIONS

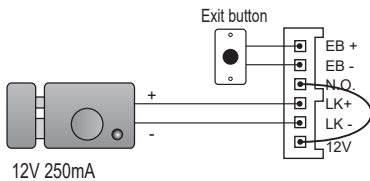
Terminal description



- **BUS:** Bus terminal
- **Lock:** connect to lock as below
- **Expand buttons:** connect to buttons expand module
- **USB:** for debug
- **Boot Key:** for debug

Door lock with internal power

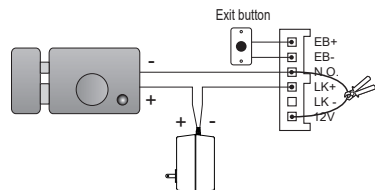
Note: The door lock is limited to 12V, and holding current must be less than 250mA.



Door lock with dry contact

Note:

1. The external power supply must be used according to the lock.
2. The inside relay contact is restricted to 220Vac or 12Vdc (no more than 1 A)
3. Cut off the cable between N.O to 12V.



BASIC FUNCTIONS

Expand 3rd call buttons

R21 – K4 connect buttons with LED

R21-K4 optional (call button not provide)

Up to 4 module total 16 buttons



R21 – K8 connect buttons without LED

R21-K8 optional (call button not include)

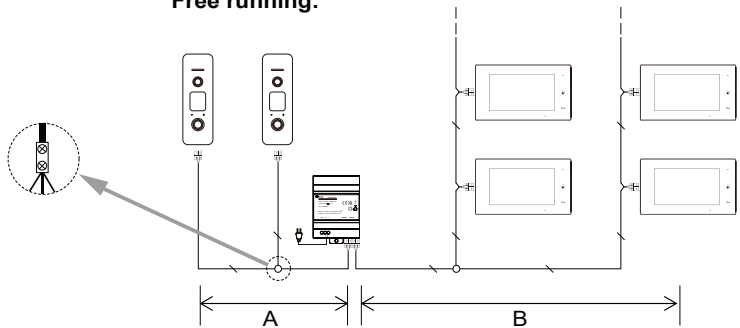
Up to 8 modules, total 32 buttons



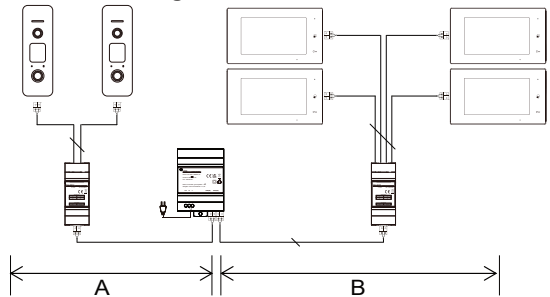
BASIC FUNCTIONS

Wiring

Free running:



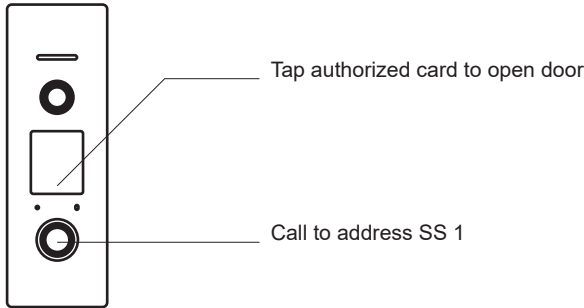
Structured cabling :



cable	A	B	A+B
0.5	40M	60M	180M
0.75	60M	90M	200M
CAT5	35M	55M	150M

BASIC FUNCTIONS

Operation

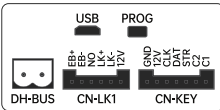


Configuration

!! The system must and can only have one door station in address1, and address 1 is a default setting, without correct settings of the address the system will not work !!

Setup Door Station Address

1. Into address setting mode



After power on and in standby, in 5 mins, keep short exit button (EB+,EB-) for 3s (after unlock promote will be one beep, release before next beep 6s), into address setting mode

2. Setup address



Press call button 1 to cycling setup the address from 1 to 8, default is address 1, so by default press call button 1 once the LED will flash once means address 2, and press call button again, the LED will flash twice means address 3, and so on, especially no flash with a beep means address 1

BASIC FUNCTIONS

Setup DPC-D2D10 on connected D2D monitor

1. On any monitor, tap “Settings” -> “Installer” -> “Onsite tool” -> input password(66666666 by default).

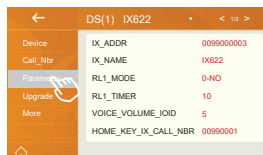


2. In the menu, tap “Refresh” until you see all device, and the tap:

3. Tap the “Setting” icon below each device to remote setup parameters.

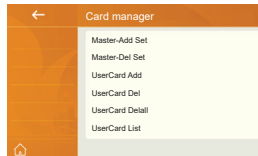
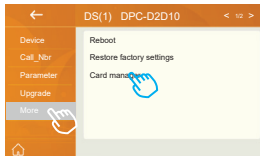
Lock setup

In remote setting menu, tap “RL1_Mode” to change the lock output of the door station is “Normally open” or “ Normally close”



SETUP INSTRUCTIONS

Card management



“Settings” -> “Manger” -> “Card manager” and select the door station needs to manager.

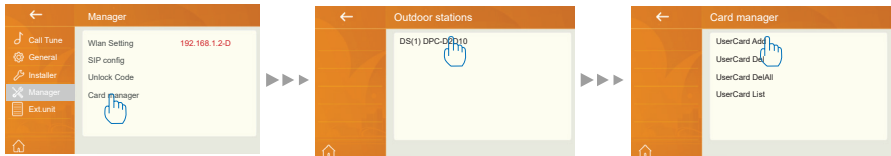
(if not see your door station check in monitoring list and back to here)

Each room number, could only manage its own cards. To delete all cards or manage all cards, use onsite tools and remotely configure the door station to manage.

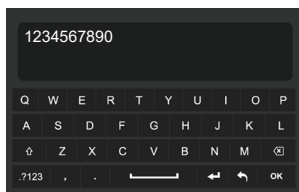
SETUP INSTRUCTIONS

Add user card

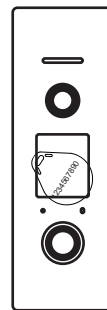
“Settings” -> “Manger” -> “Card manager” and select the door station needs to manager.
(if not see your door station check in monitoring list and back to here)



Tap “Usercard Add”, and in the input menu, to input the card NO. on the card, or tap the card on the door station



or



Delete user card

Tap “Usercard delete”, and selete the card needs to remove.
Or Tap “Delete all card”. and ALL user card will be deleted.

Specification

Power supply:	DC 20~28V
Power consumption:	Standby 2.2W; Working 2.3W
Camera:	2MP
WireType:	2-wire
Wiring Distance:	65M
Flush mounting Dimension:	L181*W60*D54.2mm
Operating temperture:	-10°C to +50 °C

The design and specifications can be changed without notice to the user. Right to interpret and copyright of this manual are preserved.