



DT-CONFIG SOFTWARE

Config software for D2 systems

USER'S MANUAL

CONTENTS

1. Introductions	3
2. System Requirement and Connection	3
3. Software Installation	
3.1. Install Software Package	4
3.2. Install The USB To RS485 Converter Hardware Driver	6
3.3. Get The COM Port Number	11
3.4. Start DT-CONFIG and Setup the COM Port	12
4. Connect A Door Station	13
5. General Overview Of DT-CONFIG Software	
5.1. Main Menu	14
5.2. Parameter Setup	15
5.3. NameList Setup	16
6. Access Control Settings	18
7. Use DT-CONFIG As Debug Tools	
7.1. Debug Tool	19
7.2. Trace Tool	20
Appendix. Print document Of A Sample Installation	21

1. Introductions

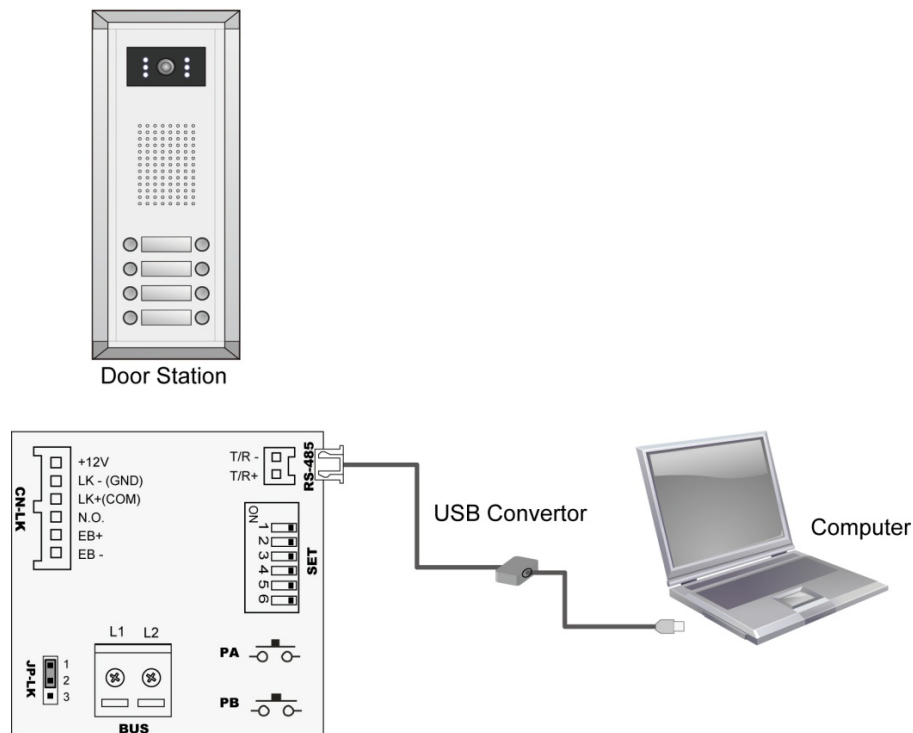
DT-CONFIG software is a powerful configuration and debug tool to setup the 2-wire system. As simplified software tool, DT-CONFIG allows installers to check and program Door Stations rapidly, which is especially useful in complex installation.

DT-CONFIG allows you to view device properties, modify parameters, re-locate Call Buttons mapping and establish Name List in a PC and then download to the Door Station. Furthermore, you can use DT-CONFIG as a assistance in field debug and maintains, by means of printing Programming Table, online search and diagnose tools.

DT-CONFIG contains a project management utility, which helps installers manage project and device information.

2. System Requirement and Connection

DT-CONFIG can be installed in a PC or laptop with Microsoft Windows XP, VISTA, Server 2003 or Server 2008 operating system, and at least 512M memory, and 100M free hard disc space. Please note, a spare USB2.0 port is necessary to connect interface converter.



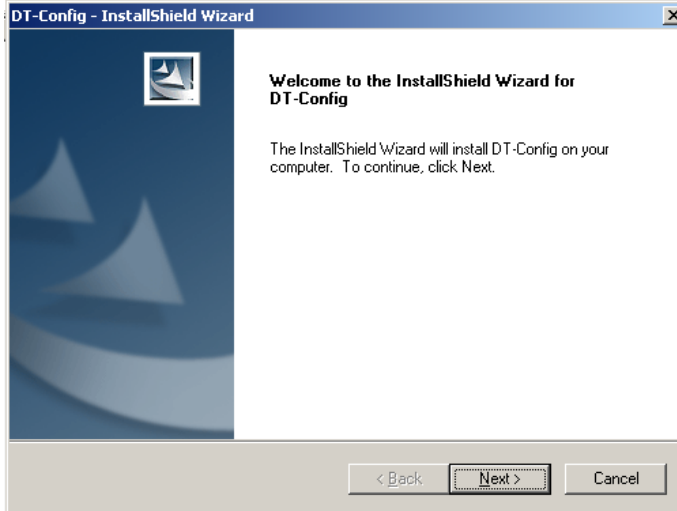
Note . The Monitors in above diagram are not necessary.

USB2.0 to RS485 interface converter is packaged in DT accessory box.

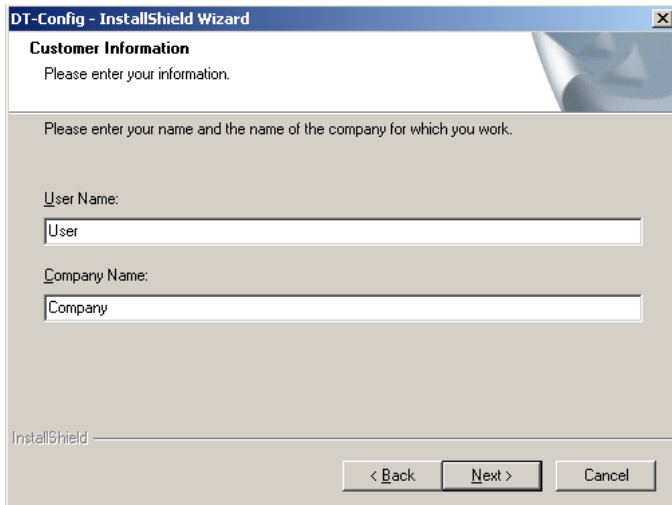
3. Software installation

3.1. Install the software package

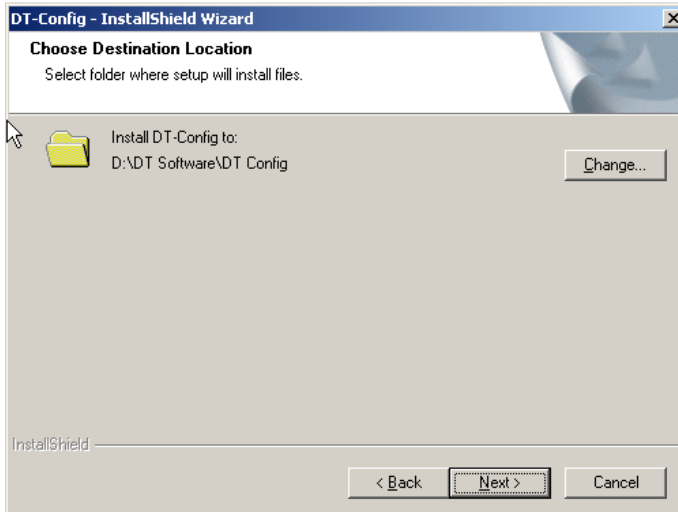
3.1.1. Insert the software CD, double click the setup.exe file (Windows will automatically run setup, if your PC auto run option isn't disabled), to launch the install process.



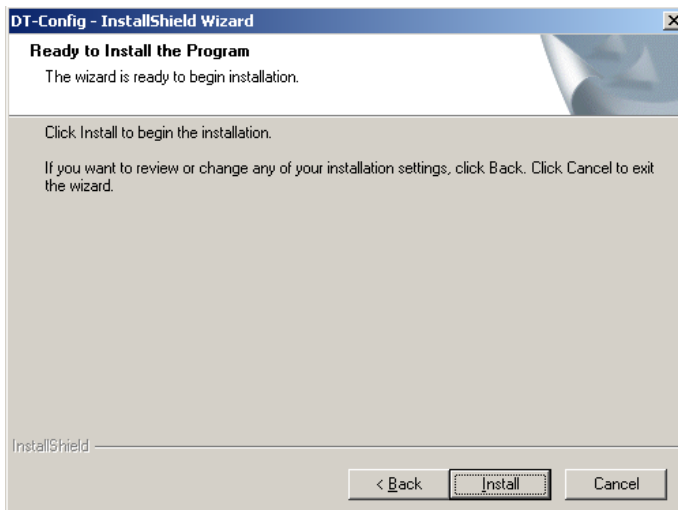
3.1.2. Fill the User Name and Company Name information.



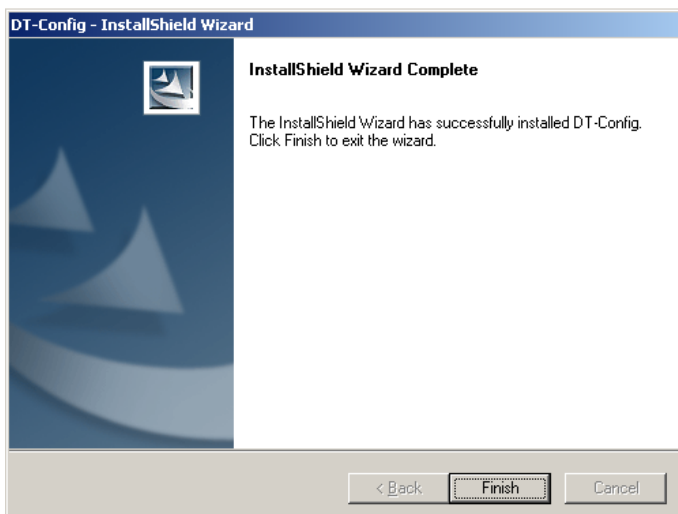
3.1.3. Use default install path, or change the path if needed, then click Next button.



3.1.4. confirm to start installation.



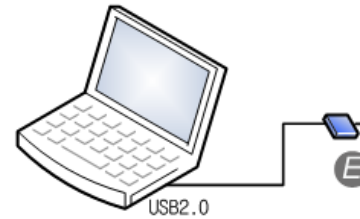
3.1.5. After the installation is finished, confirm and exit.



3.2. Install the USB to RS485 converter hardware driver

This is very important step, must be careful to make sure the converter has been installed correctly.

Please note, in this step, you don't need to connect with the Door Station, use converter alone.



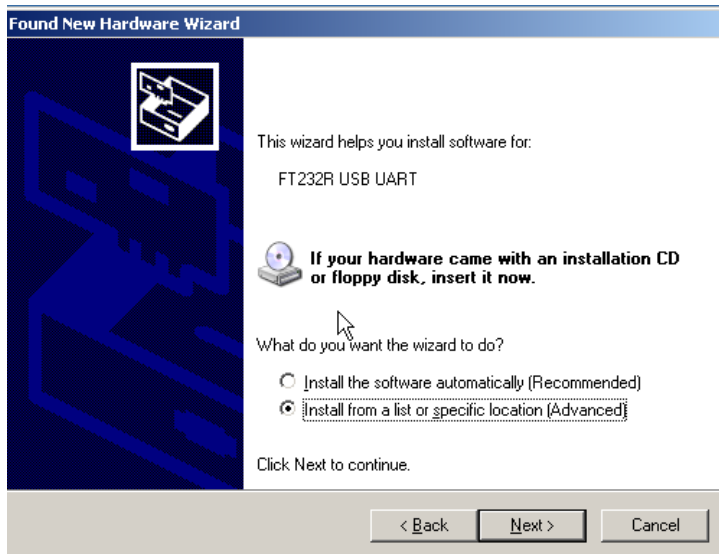
3.2.1. Connect the USB to RS485 converter to your PC USB port. Wait 5 seconds or more, Windows system will show that a new hardware is found.



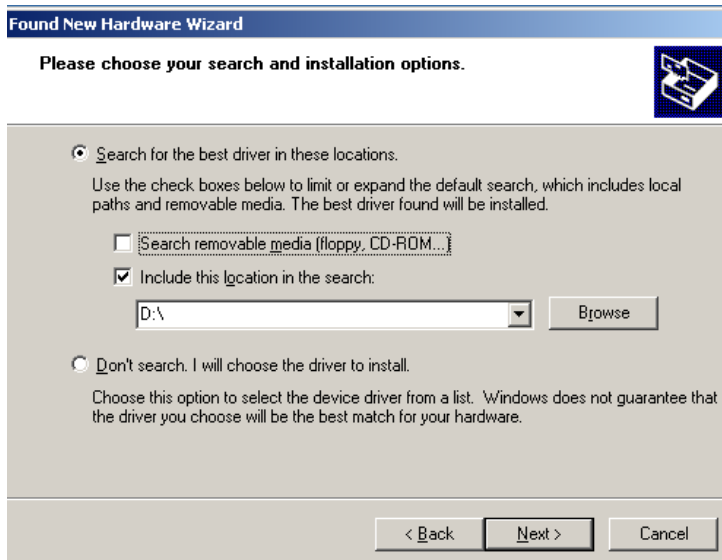
3.2.2. Select the last item 'No , not this time', then click Next button.



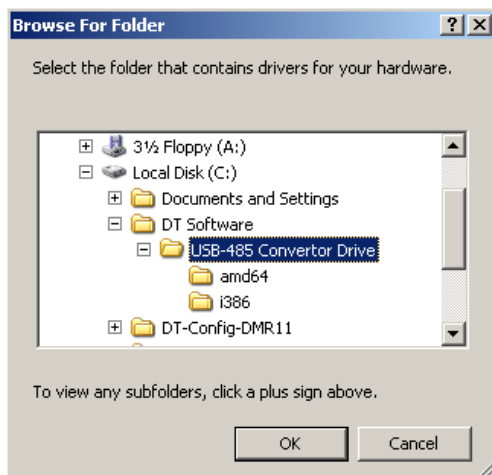
3.2.3. Select 'Install from a list or specific location (Advanced)', then click Next button



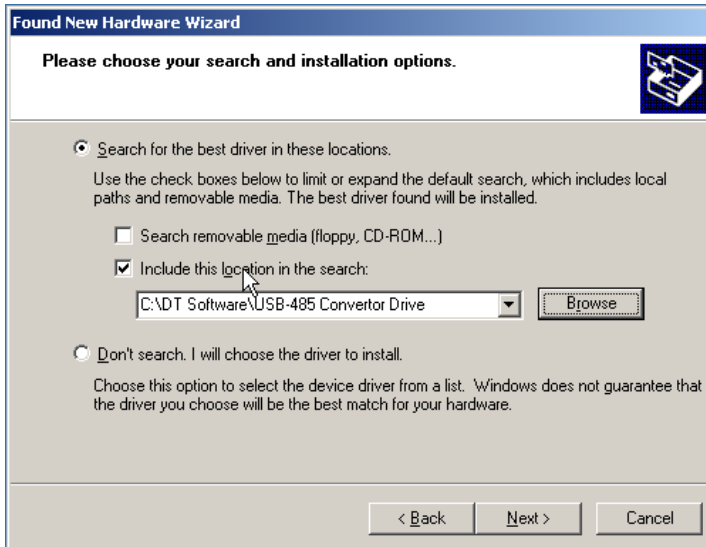
3.2.4. Select 'Include this location in the search', then click Browse button.



3.2.5. Select the 'USB-485 Converter Drive' of DT-CONFIG software install path, then click OK button.



3.2.6. After the browse operation, click Next button.



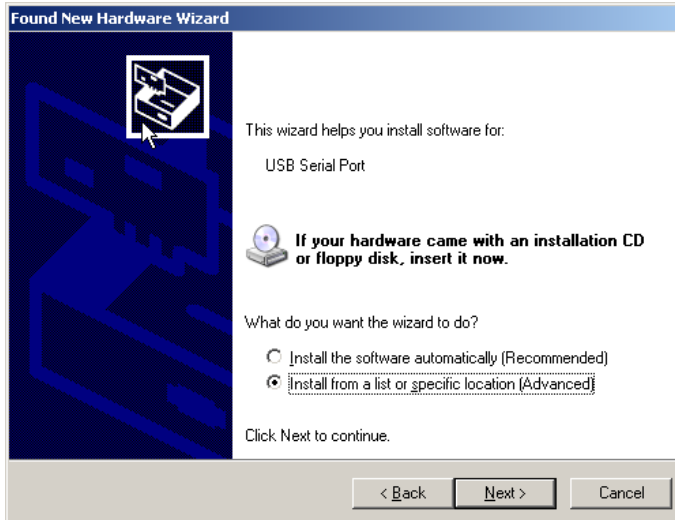
3.2.7. Windows will indicate the Wizard has been completed, then click Finish button.



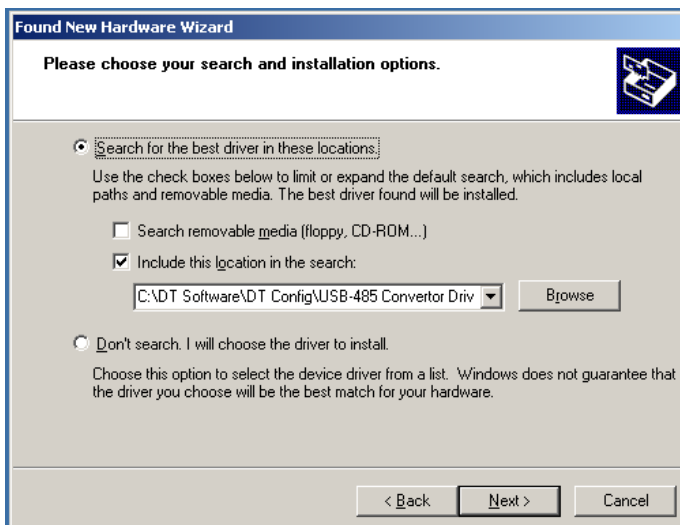
After 4.2.1 to 4.2.7 operation, you have installed the **USB Serial Converts**.

In the next steps, you will install **USB Serial Port**, similar with previous.

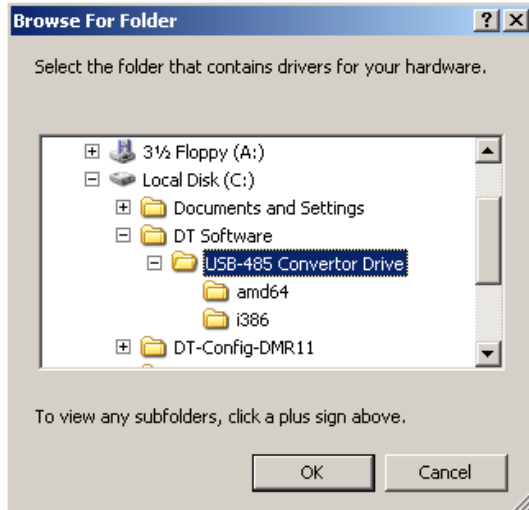
3.2.8. Wait a few seconds, Windows will show a new USB Serial Port is found, select and operate as previous steps. Firstly, Select 'Install from a list or specific location (Advanced)', then click Next button.



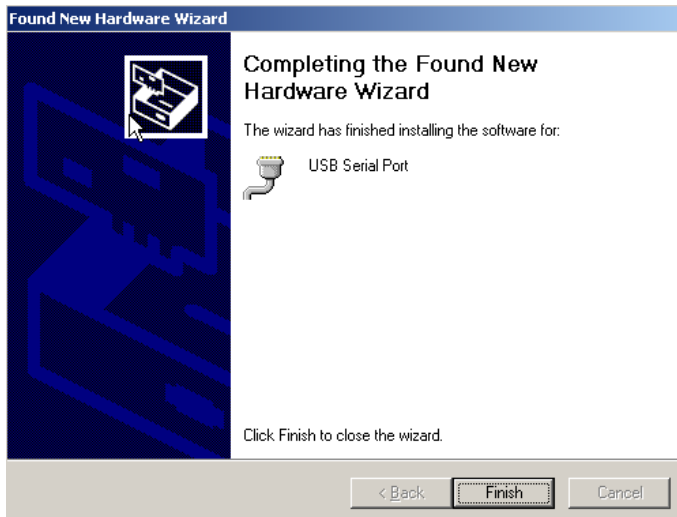
3.2.9. Select 'Include this location in the search', then click Browse button.



3.2.10. Select the 'USB-485 Convertor Drive' of DT-CONFIG software install path, then click OK button.



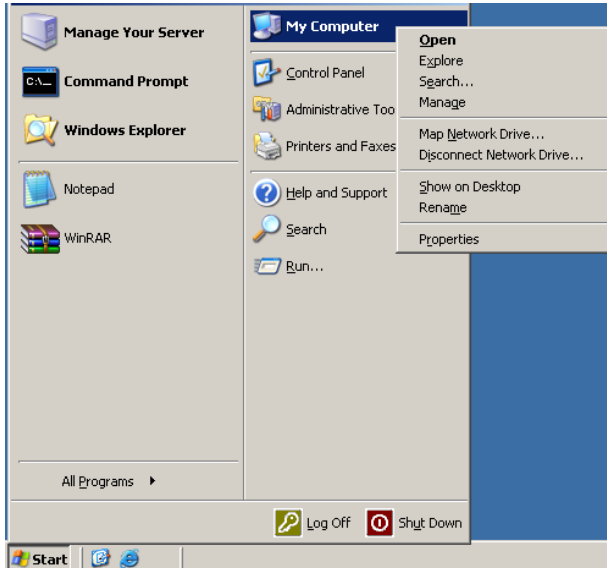
3.2.11. After the browse operation, click Next button.



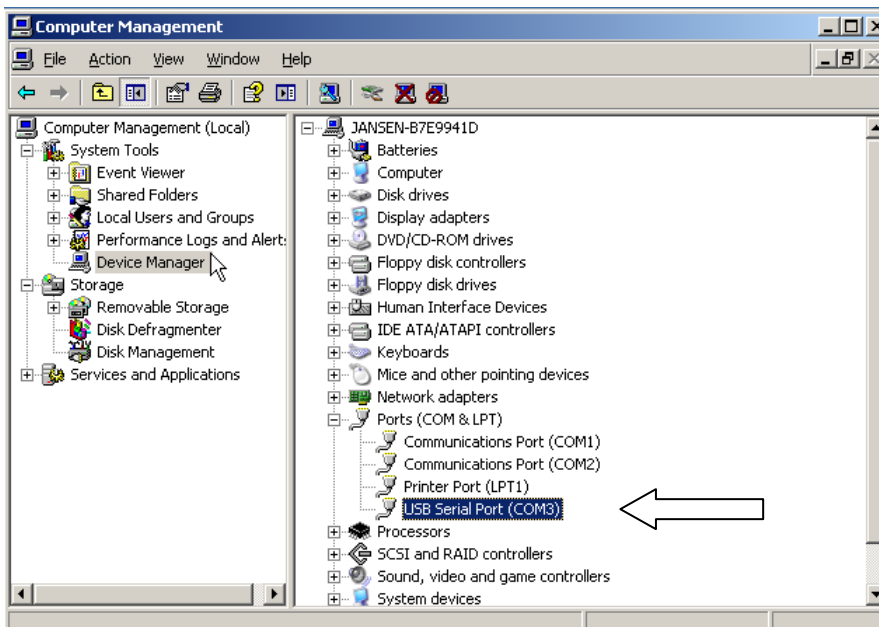
After 4.2.8 to 4.2.11 operation, you have installed the **USB Serial Port**.
By now, the USB converter related drivers have been installed.

3.3. Get Te COM Port Number

3.3.1. Operate as 'Start->My Computer', by right click on mouse, then select 'Manage', to launch 'Computer Management'

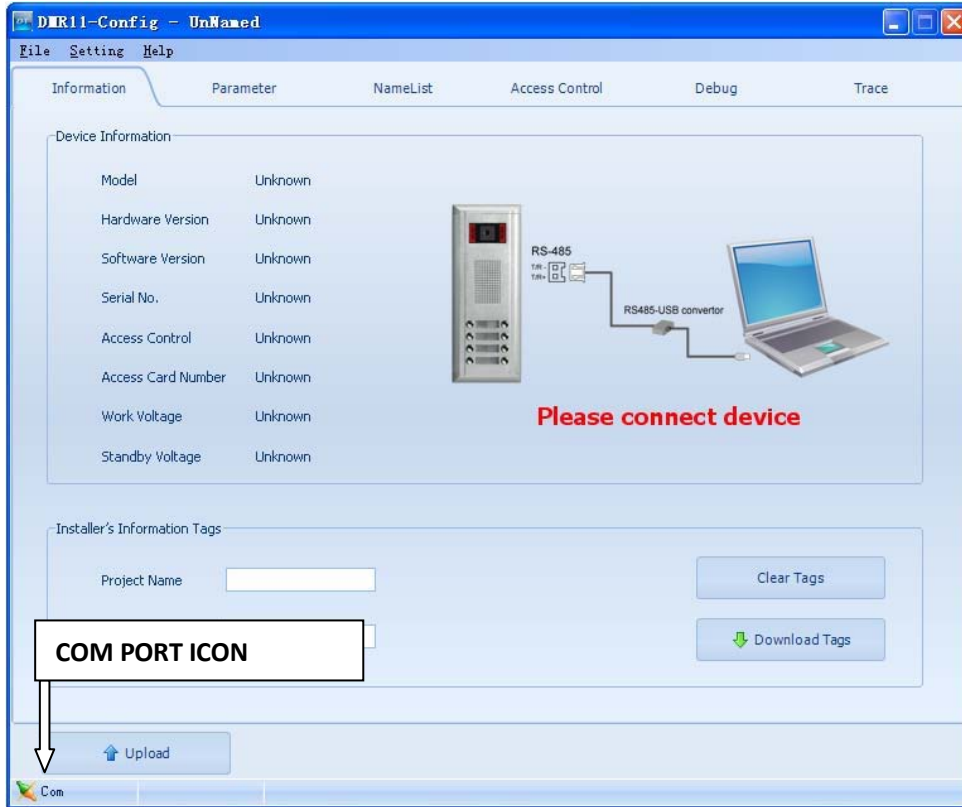


3.3.2. Locate Device Manager, and click and expand 'Ports (COM & LPT)', you will find the 'USB Serial Port (COM?)' item. Please note, in different PC, the COM number is different, just remember it, this information will be used for next step.

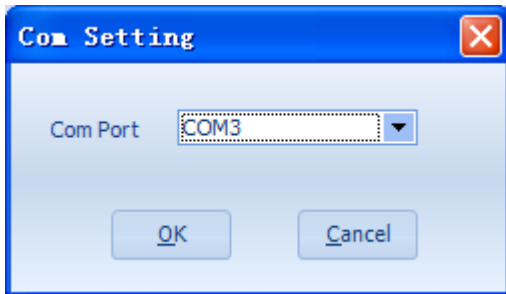


3.4. Start DT-CONFIG and Setup The COM Port

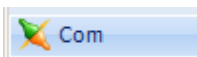
3.4.1. Run DT-CONFIG software



3.4.2. Select 'Setting → COM Setting', and select the COM port which was found in 3.3.2



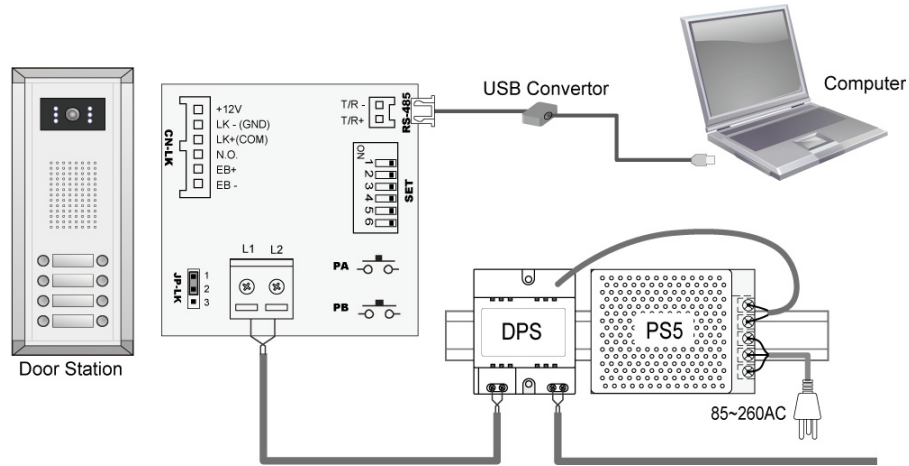
3.4.3. After the correct COM port has been selected, the COM PORT ICON will stop flashing.



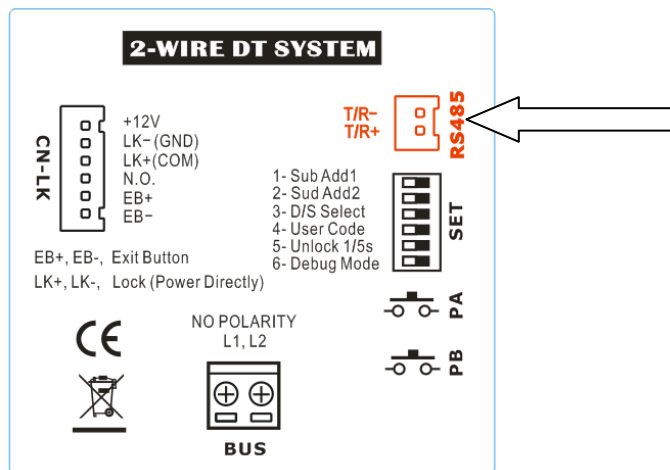
This ICON means the USB to RS485 converter has been connected.

4. Connect A Door Station

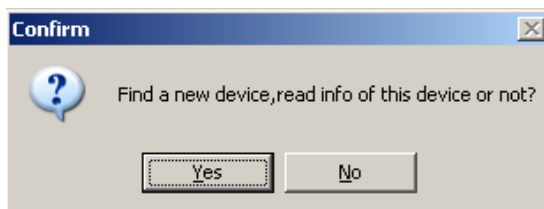
- 4.1. Connect the Door Station, DPS, PS5 correctly, then power on the system. However, you can connect the Door Station with Monitors also installed, such as in a finished installation.



- 4.2. Connect the 2pin plug of the converter, to the RS485 socket in Door Station, which you will find on the wiring box.

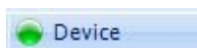


- 4.3. After connecting correctly, a window will pop up, to indicate that a Door Station is found.



Select Yes to read configuration data of the connected Door Station, or No to use default.

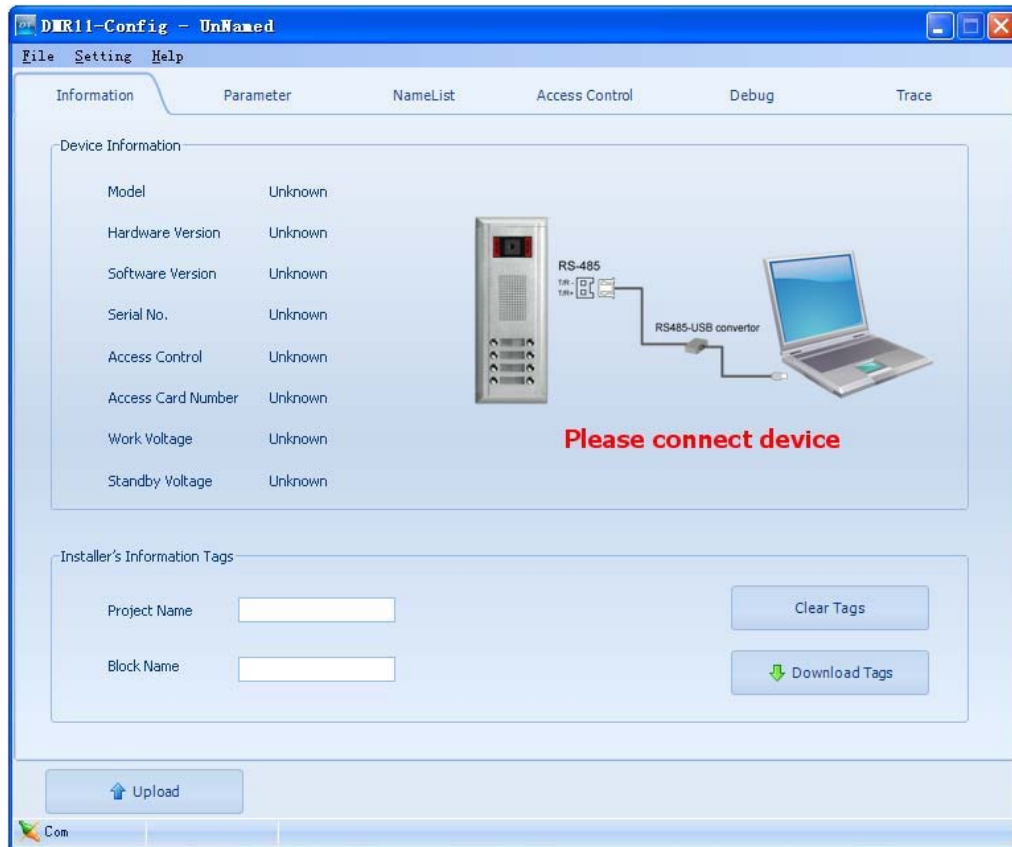
- 4.4. After 4.3 confirm operation, the Device Icon will be light to show a Door Station is online.



This means a Door Station is connected correctly.

5. General Overview Of DT-CONFIG Software

5.1. Main Menu



Main Menus

- **File menu** includes all project operations, such as **New, Open, Save, Save As** and **Exit**.
- **Setting menu** includes **Com Setting** and **Language** (Not included in Demo version).
- Refer **Help** menu for help contents.

Information (Read/Upload from connected Door Station, can't be changed)

- **Product Model, Hardware Version, Software Version, Serial, Access Control, Access Card Number, Work Voltage, Standby Voltage.**

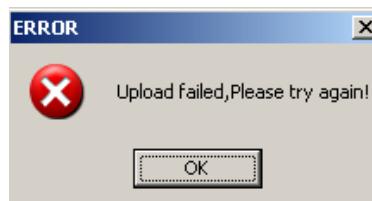
Note. **Serial** is a unique number programmed in assemble line and used for tracking

Upload Button

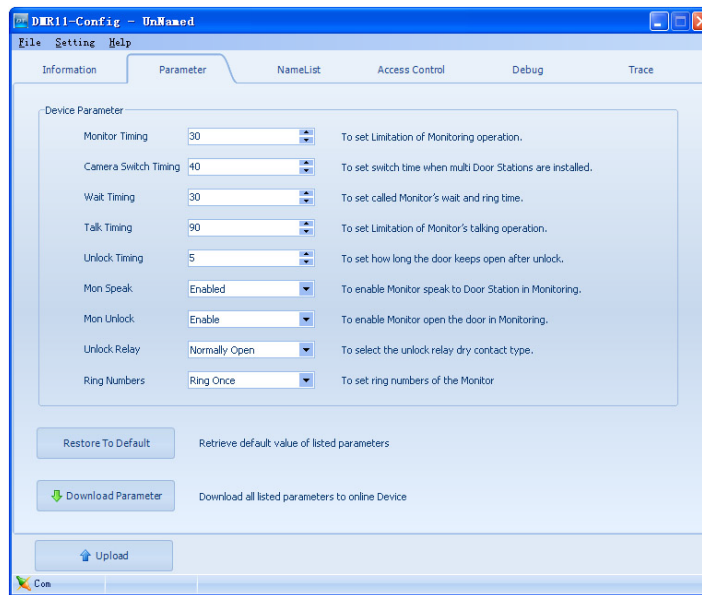
Upload function will read the connected Door Station information, including the following:

- Information on **property page**, and Parameters listed on **Parameter page**
- Panel models, Call Button mapping, Room Number and Name table on **NameList page**.

After upload operation, the result will be showed as below.



5.2. Parameter Setup



Items	Descriptions	Default
Monitor Timing	From 6s to 600s. To set Limitation of Monitoring operation.	30 s
Camera Switch Timing	From 6s to 600s. When multi Door Stations are installed, set the Monitoring time of this Door Station, and will be switched to next Door Station after this time.	40 s
Wait Timing	From 10s to 600s. To set call wait and ring time, if Monitor don't answer a call within this time, calling will be canceled.	30 s
Talk Timing	From 10s to 600s. To set Limitation of talking operation.	90 s
Unlock Timing	From 1s to 99s. To set the time that how long the door keeps open when lock is released.	5 s
Mon Speak	To enable Monitor under monitoring state can speak to Door Station at same time. This option can be enabled/disabled.	Enabled
Mon Unlock	To enable Monitor under monitoring state can open the door at same time. This option can be None (disabled); and other 3 options all support open door operation, but with different close timing Support, None Delay (Close the Monitor after unlock), Delay 5s (Close the Monitor, 5s after unlock).	Support
Unlock Relay	To select the unlock relay dry contact type, for different lock types. This option can set to Normally Open or Close.	Normally Open
Ring Numbers	To select the ring mode: ring once, ring twice, ring thrice and cycle ring.	Ring Once

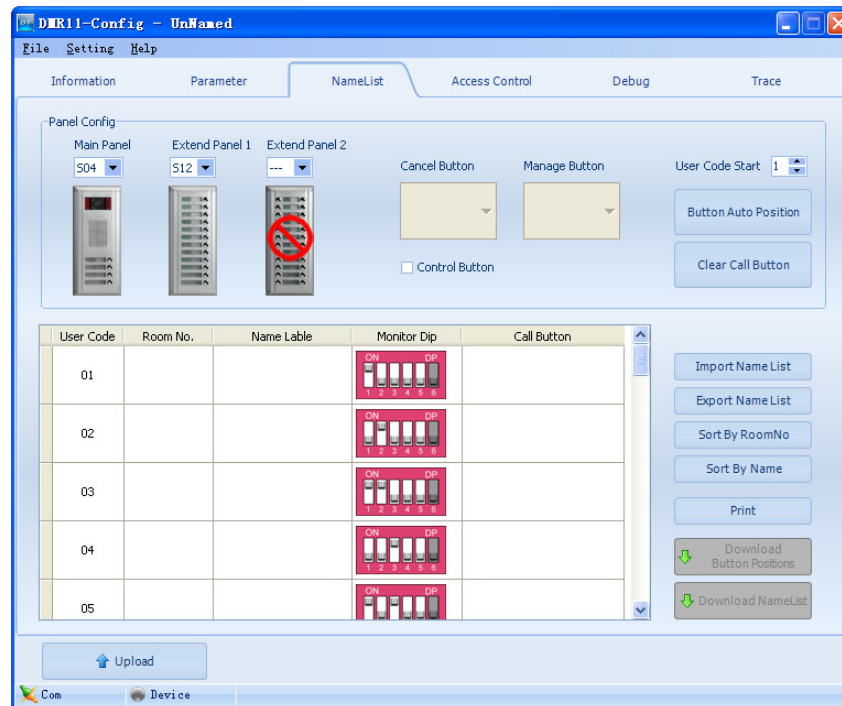
Restore to default Button

This operation will retrieve default value of listed parameters.

Download Parameter Button

This operation will download all the parameters on this page to connected Door Station.

5.3. NameList Setup



Panel Configuration

To select the Door Station and Expanded Panel combination in a specific entrance. Please note the total Call Buttons are limited to 32. If **Cancel Button** and Manage Button (**Call Guard Unit**) are needed, click [Control Button] check option, and then specify the Call Buttons to be used. If User Code of this entrance isn't regularly arranged, set [Start User Code] if necessary. After above operations, press **Auto Set** button to create a User Code mapping. You can modify the User Code mapping if necessary. Also, you can click Clear Button Position button to clear the mapping, and assign the Call Button by manual.

User Code, Name List and DIP Programming information

Edit the grids to fill Room No and Name Label, please note limitation less than 20 chars. You can sort the table by Room No, or by Name Label. Use Download Button Position button to download Call Buttons mapping to connected Door Station. After editing, you can export the Name Label and User Code information to TXT file, so as to create a printable name label file, which can be used to replace the Door Station name labels.

Download NameList information

In 2-wire DT system, Monitors will display a intercom NameList menu for intercom calling. This name dictionary is transmitted from Door Station, and should be previously downloaded from DT-CONFIG software. After editing NameList information in software, press **Download NameList** to save into Door Station. In field installation, when Monitors are installed, use Door Station PA button to transmit name dictionary to Monitors, see technical manual for reference.

Print User Code programming table

Use Print Button to print a field programming reference document, it is much useful in installation and after-installation service.

Part of printing job as below, including configuration and reference table:

DOOR STATION CONFIGURATION

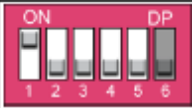

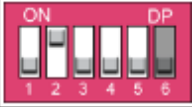





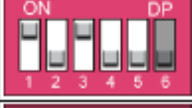







Device

Project Name VTK SAMPLE PROJECT

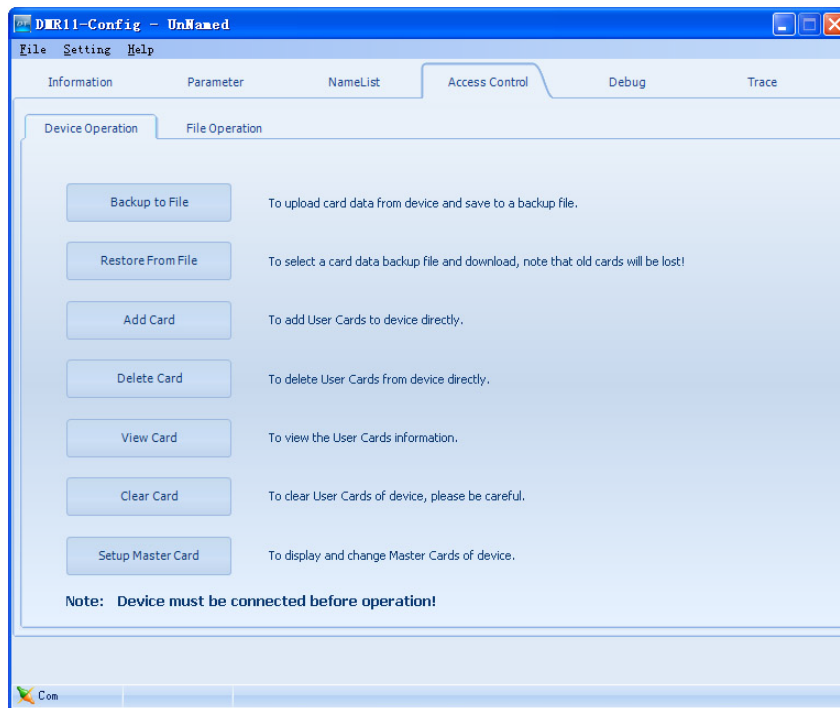
Device Name Building 7, Gate 1

... ..

USER CODE PROGRAMMING TABLE

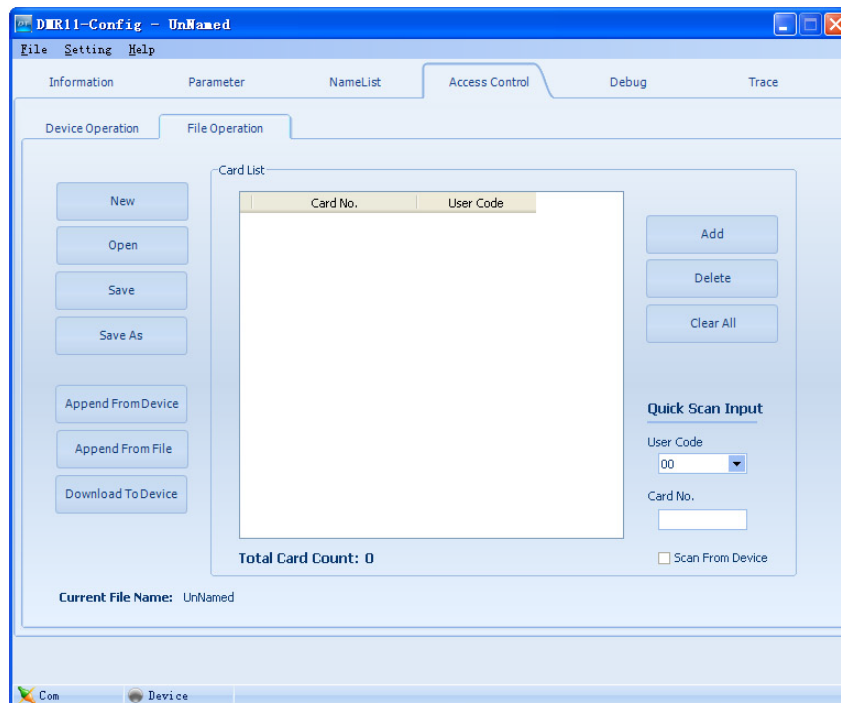
User Code	Room No	Name	Dip	Button Position
01	7B-802	Jim, Zhang		
02	7B-831	Cherry, Shi		
03	7B-833	David, Lo		
04	7B-835	Calo, Liu		
05	7B-834	Jana, Joe		
06	7B-821	Vicky, Zhou		
07	7B-812	Ajun, Zhang		
08	7B-836	Jacko, Zhang		

6. Assess Control settings



Device Operation

This page includes all the Card operations in the device: **Backup to File, Restore From File, Add Card, Delete Card, View Card, Clear Card, Setup Mater.**

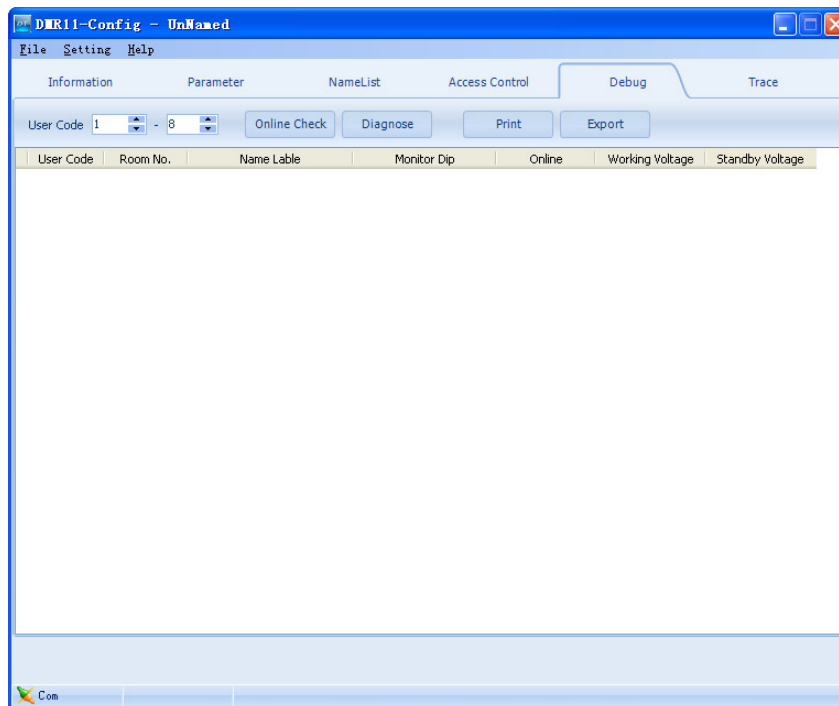


File Operation

In this tab you can manage the file that include all the card information. You can edit the file to change the information, such as add/delete user cards to a specific User Code to the exits file, clear all card register information, and then update to the device or save the file as a backup.

7. Use DT-CONFIG As Debug Tools

7.1. Debug Tool



User Code Range

To change the User Code start and end address, only set valid range will save more time.

Online Check Button

Use this button to start Online searching, and the result will be showed in list window. Online search function is designed for the purpose of getting a quick view of the Monitors installing situations, or to check if each of them works or not. This is very useful for installation maintain.

Diagnose Button

Use this button to start Diagnose operation, and the result will be showed in list window.

Diagnose operation will check the Monitor's working voltage and standby voltage, video signal presentence, and data communication.

By means of this tool, if a Monitor passes the test, generally this Monitor should works well.

Print Button

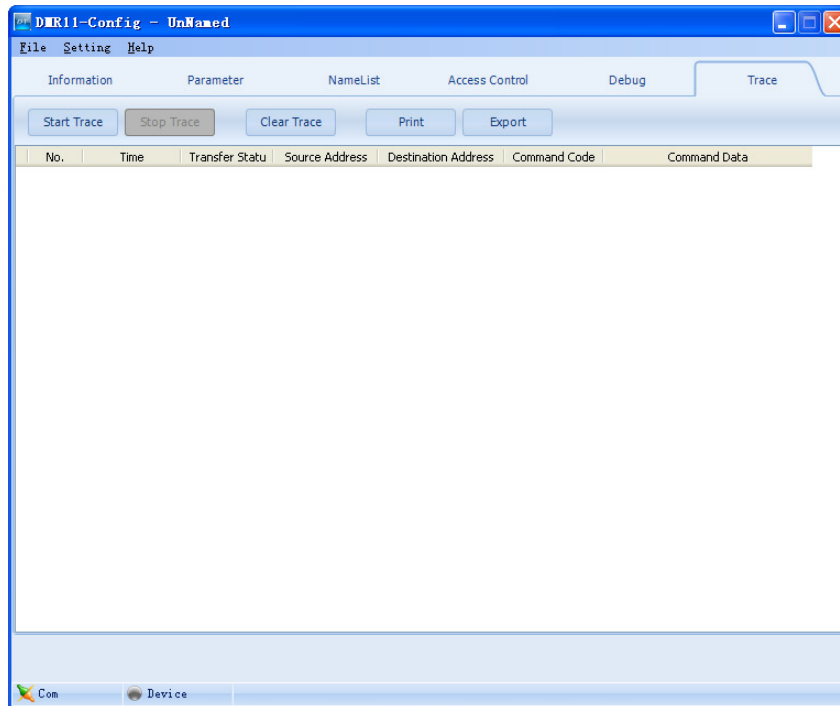
To print the debug result window information, for installation delivery documentation or memo.

Export Button

By means of this tool, if a Monitor passes the test, generally this Monitor should works well.

To export the debug result window information, you can analyze it in EXCEL sheet.

7.2. Trace Tool



About trace

TRACE tool will display all data communication information presented on 2-wire BUS, which can be a high-end tool used by expertise to check the system stability, or locate the problem more easily in a complex installation.

Please note, it is not suitable for normal installers, as the data streams are complex.

However, installers can send back the trace log, thus the engineers can analyze and help.

Start Trace Button

To initiate and start trace operation, when system works, result will be automatically send back and displayed in log window.

Stop Trace Button

To stop trace operation.

Clear Trace Button

To clear the log listed in window, when you need to trace a new operation, it is useful.

Print Button

To print the log listed in the result window.

Export Button

To export the log listed in the result window to a TXT file. When you need to send back the trace log, or analyze in EXCEL sheet, you should export the log first, then open it in EXCEL.

Appendix. Print Document of a sample installation - 1

DOOR STATION CONFIGURATION

Device

Project Name	VTK SAMPLE PROJECT
Device Name	Building 7, Gate 1

Information

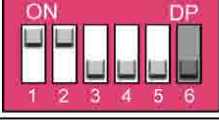
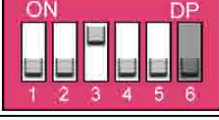
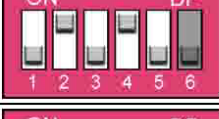
Model	MR11
Hardware Version	MR11-CT A1.1 V
Software Version	01-001 D
Serial No	

Paramter

Monitor Timing	30
Camera Switch Timing	40
Wait Timing	30
Talk Timing	90
Unlock Timing	3
Mon Speak	Enabled
Mon Unlock	Support

Print Document of a sample installation - 2

USER CODE PROGRAMMING TABLE

User Code	Room No	Name	Dip	Button Position
01	7B-802	Jim, Zhang		
02	7B-831	Cherry, Shi		
03	7B-833	David, Lo		
04	7B-835	Calo, Liu		
05	7B-834	Jana, Joe		
06	7B-821	Vicky, Zhou		
07	7B-812	Ajun, Zhang		
08	7B-836	Jacko, Zhang		
09				
10				
11				

Print Document of a sample installation - 3

Diagnose

User Code	RoomNo	Name	Online	Work Voltage	Stadnby Voltage	Dip
01	7B-802	Jim, Zhang	Online	25.68	25.85	
02	7B-831	Cherry, Shi	Online	25.29	25.43	
03	7B-833	David, Lo	Offline			
04	7B-835	Calo, Liu	Offline			
05	7B-834	Jana, Joe	Offline			
06	7B-821	Vicky, Zhou	Offline			
07	7B-812	Ajun, Zhang	Offline			
08	7B-836	Jacko, Zhang	Offline			

Print Document of a sample installation - 4**Trace**

Number	Time	Statu	Source	Destination	Code	Command Data
1	18:22:44	Success	34	84	72	
2	18:22:44	Success	84	34	F0	
3	18:22:44	Success	34	38	50	
4	18:22:44	Success	34	84	70	
5	18:22:44	Success	84	34	83	
6	18:22:47	Success	34	84	71	
7	18:22:47	Success	34	38	56	
8	18:22:47	Success	34	88	72	
9	18:22:47	Success	88	34	F0	
10	18:22:47	Success	34	88	72	
11	18:22:51	Test				
12	18:22:54	Success	88	34	80	
13	18:22:54	Success	34	88	76	
14	18:22:54	Test	30	30	30	
15	18:22:56	Success	88	34	81	
16	18:22:56	Success	34	88	76	
17	18:23:01	Success	88	34	81	
18	18:23:01	Success	34	88	76	
19	18:23:04	Test	30	30	30	
20	18:23:04	Success	88	34	82	
21	18:23:05	Success	34	38	56	
22	18:23:05	Success	34	88	76	
23	18:23:08	Success	84	84	86	
24	18:23:08	Success	34	84	76	
25	18:23:08	Success	34	38	57	
26	18:23:12	Success	84	34	81	
27	18:23:12	Success	34	84	76	