

# UTM Content Security Gateway

## CS-950



# Presentation Outlines

- ◆ Product Positioning
- ◆ Product Overview
- ◆ Product Advantages
- ◆ Product Features
- ◆ Applications
- ◆ Comparison Table
- ◆ Appendix

**Virtualized Next-Generation UTM**

Antispam Antivirus SPI Firewall IDP Defence

Spam Network Attack Virus

PLANET UTM Content Security Gigabit Gateway CS-950

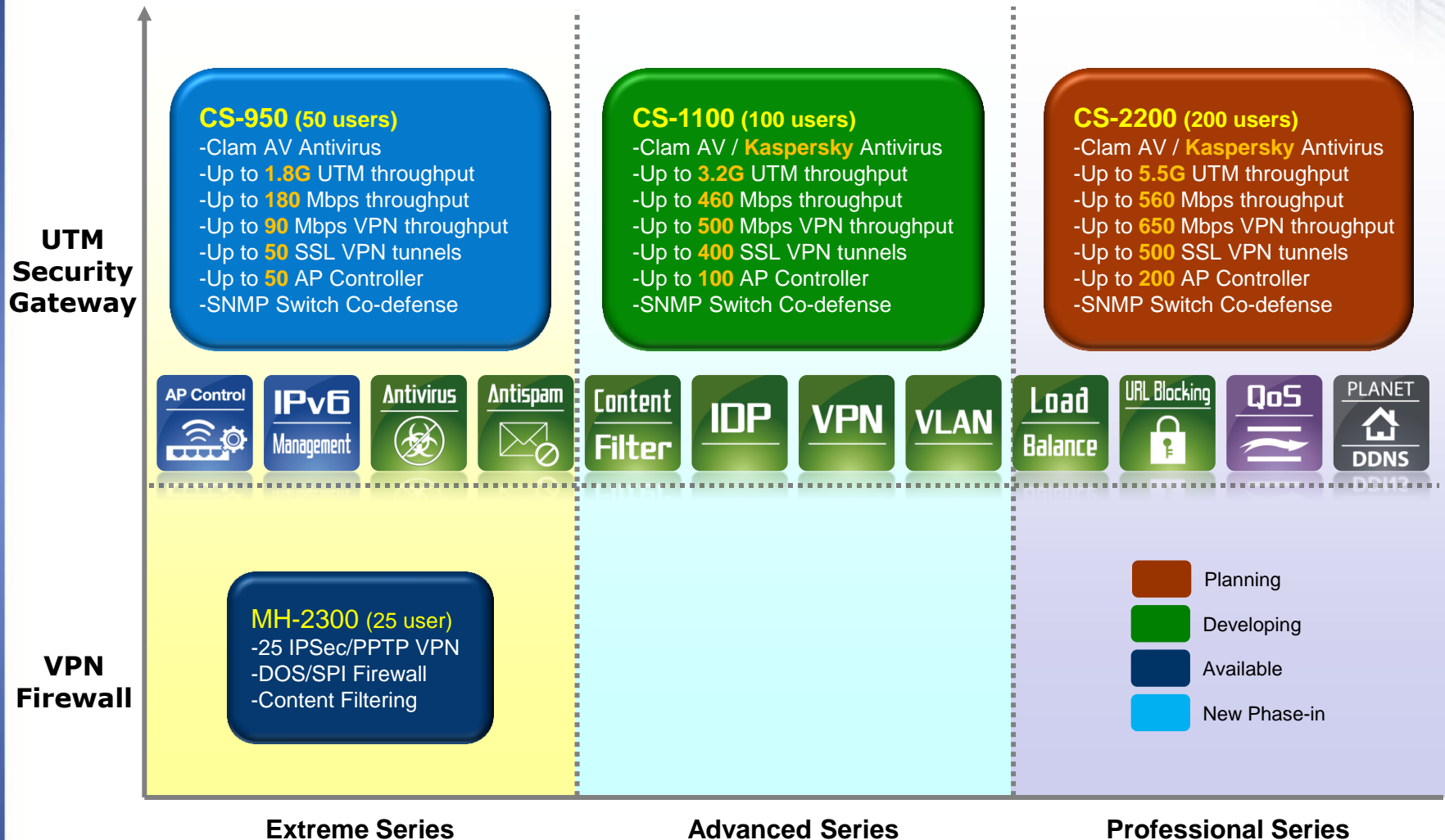
Wireless AP Controller

Switch Co-defence

# Product Positioning



# PLANET Network Security Family



# Product Overview



# Product Overview



## ◆ Differences between UTM Gateway and VPN Firewall

Model	CS-2100	CS-950	MH-2300
	UTM Content Security Gateway		VPN Firewall
Antivirus (AV)	O	O	X
Antispam	O	O	X
IDP (Intrusion Detection and Prevention)	O	O	X
Application Control	O	O	X
VPN High Availability (HA)	O	O	X
AP Controller	X	O	X
SNMP switch Co-defense	X	O	X
VPN	IPSec, PPTP/L2TP, SSL VPN		IPSec, PPTP
Firewall (DOS/SPI)	O	O	O
Content Filtering (CF)	O	O	O
User Authentication	O	O	O
Load Balance	O	O	O
Failover	O	O	O
IPv6	O	O	O

# Product Overview

## ◆ Front Panel of CS-950



2

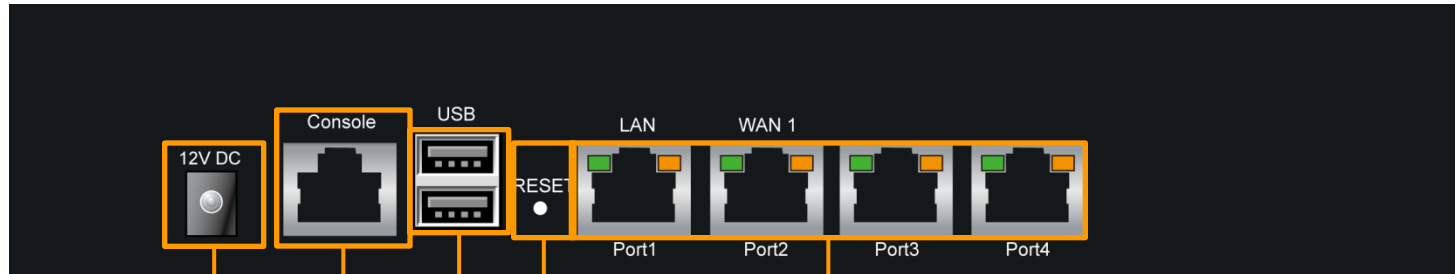
Port LED Indications

1

System/Power LED

# Product Overview

## ◆ Rear Panel of CS-950



1

Power DC Jack

2

Console Port

3

USB Slots

RESET

4

Reset Button

5

Gigabit Ethernet Port



# Product Advantages



# Product Advantages

- ◆ As required by customers

**Antivirus/Antispam**  
and **IDP** functions  
provide advance  
protection for business

Integrated **AP**  
**controller** and **switch**  
**Co-defense**  
to provide flexible  
deployment options



Complete r  
protection with  
**Filtering**  
**Application Control**

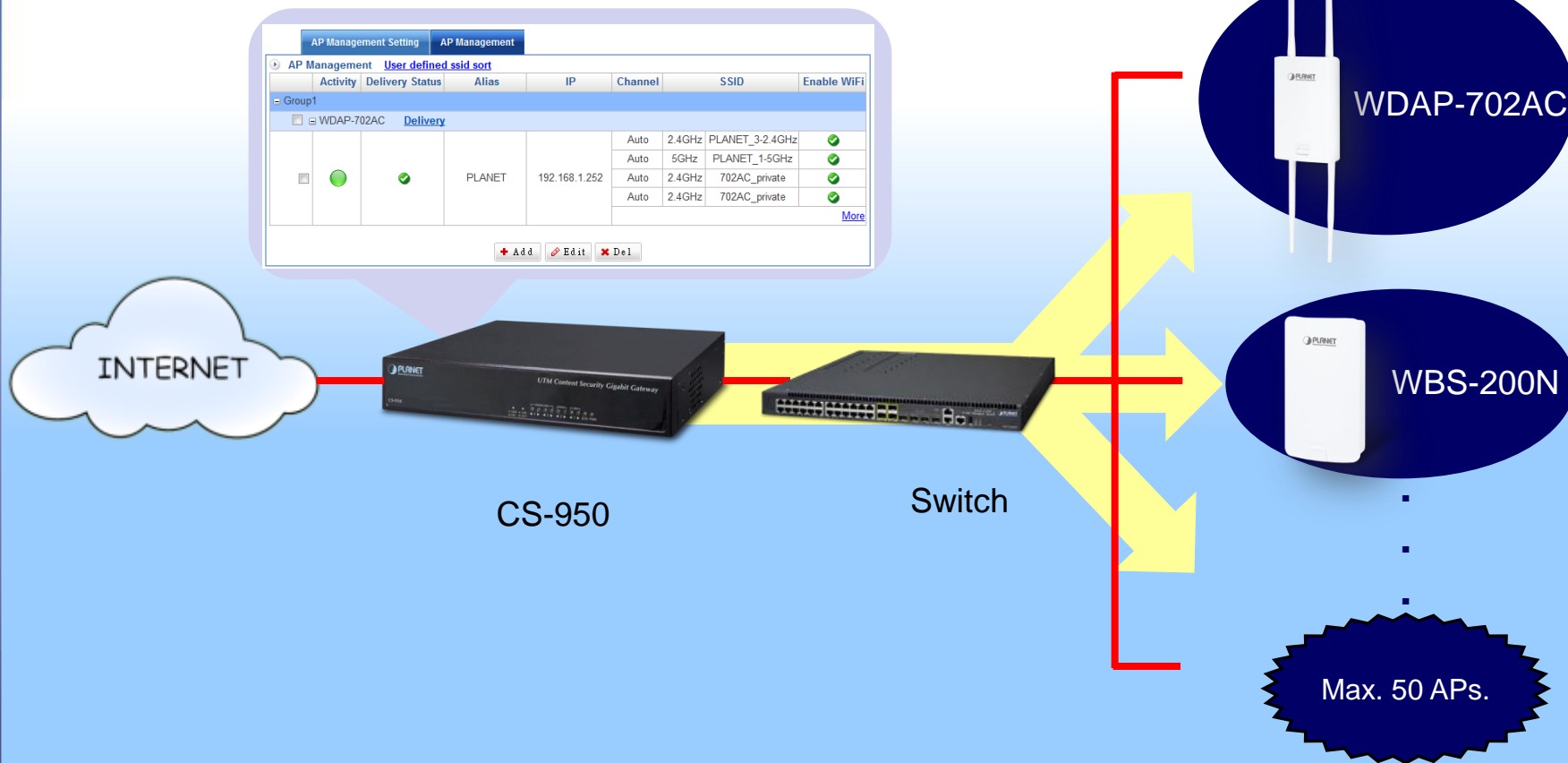
**CS-950**  
**All-in-one Next Generation UTM**  
for small businesses

**SSL, IPSec** and  
**2TP** over VPN  
connectivity

# Product Advantages

## ◆ AP Management

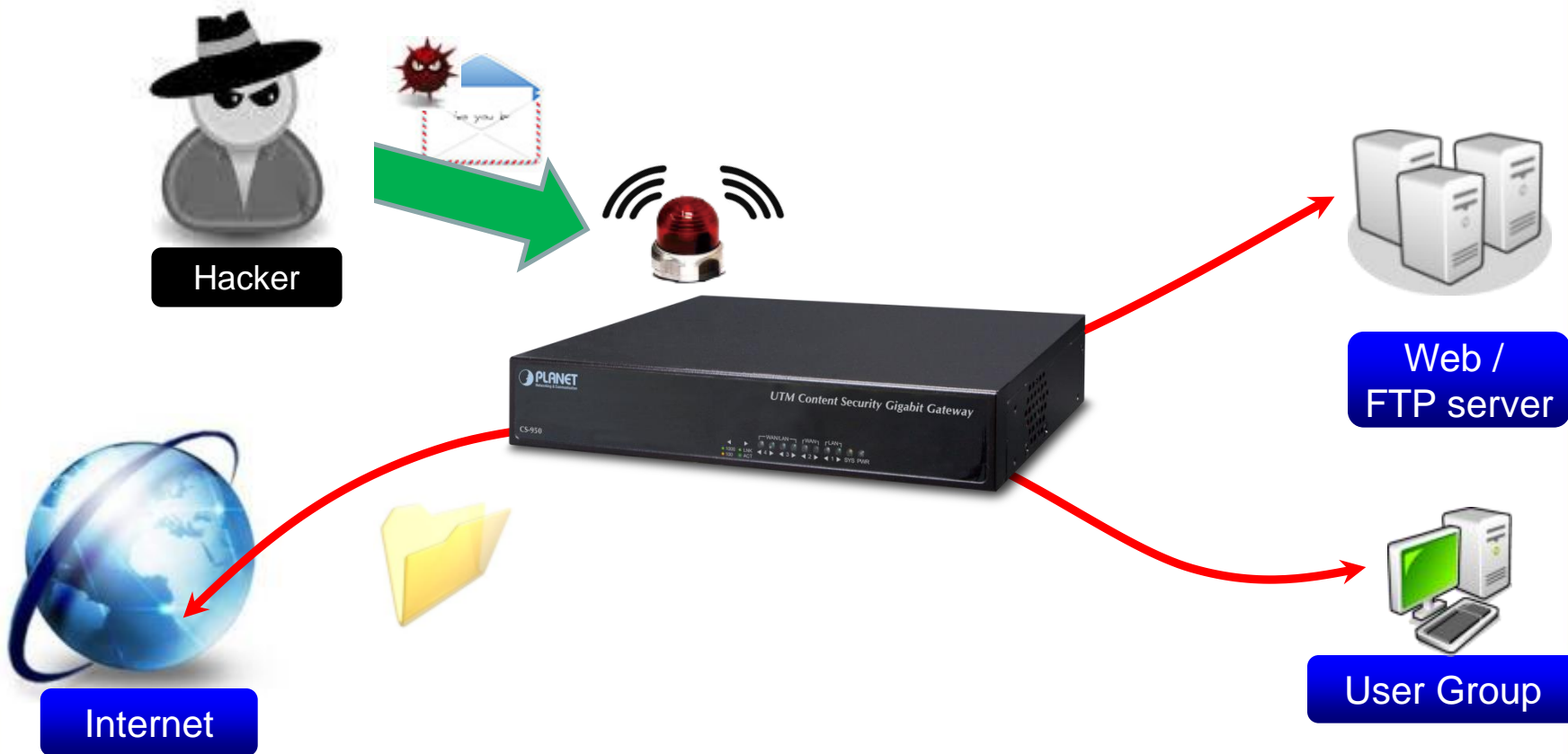
- ✓ CS-950 can be a unified platform to control and manage deployed wireless access points.



# Product Advantages

## ◆ Antivirus & Antispam Functions

- ✓ CS-950 can detect the mail containing viruses and spam at the first moment.

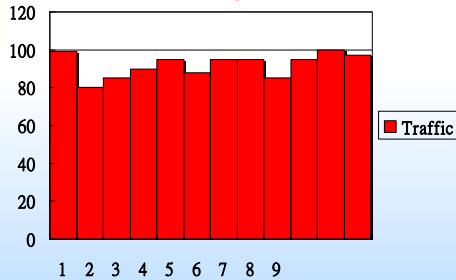


# Product Advantages

## ◆ Load Balance

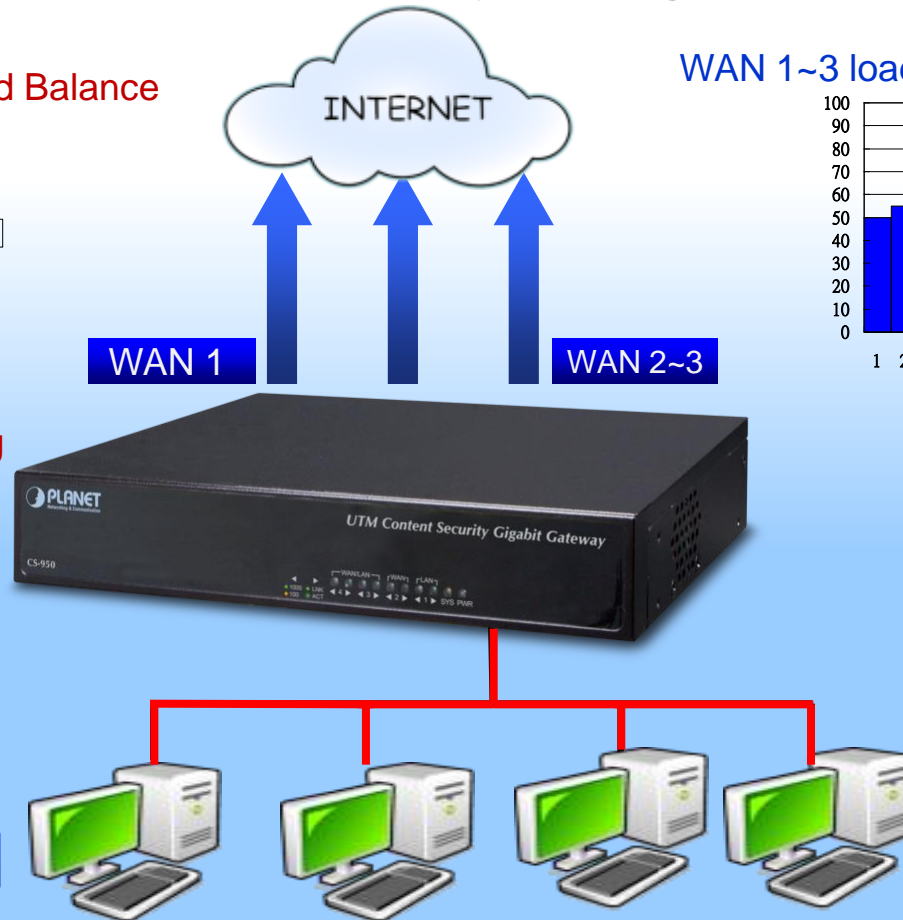
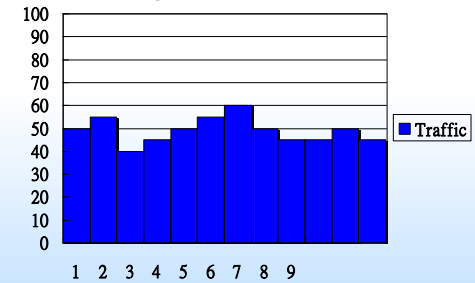
- ✓ Distributes the outward sessions by the usage status of each WAN port.

WAN 1 loading without Load Balance



Network Traffic Overloading

WAN 1~3 loading with Load Balance

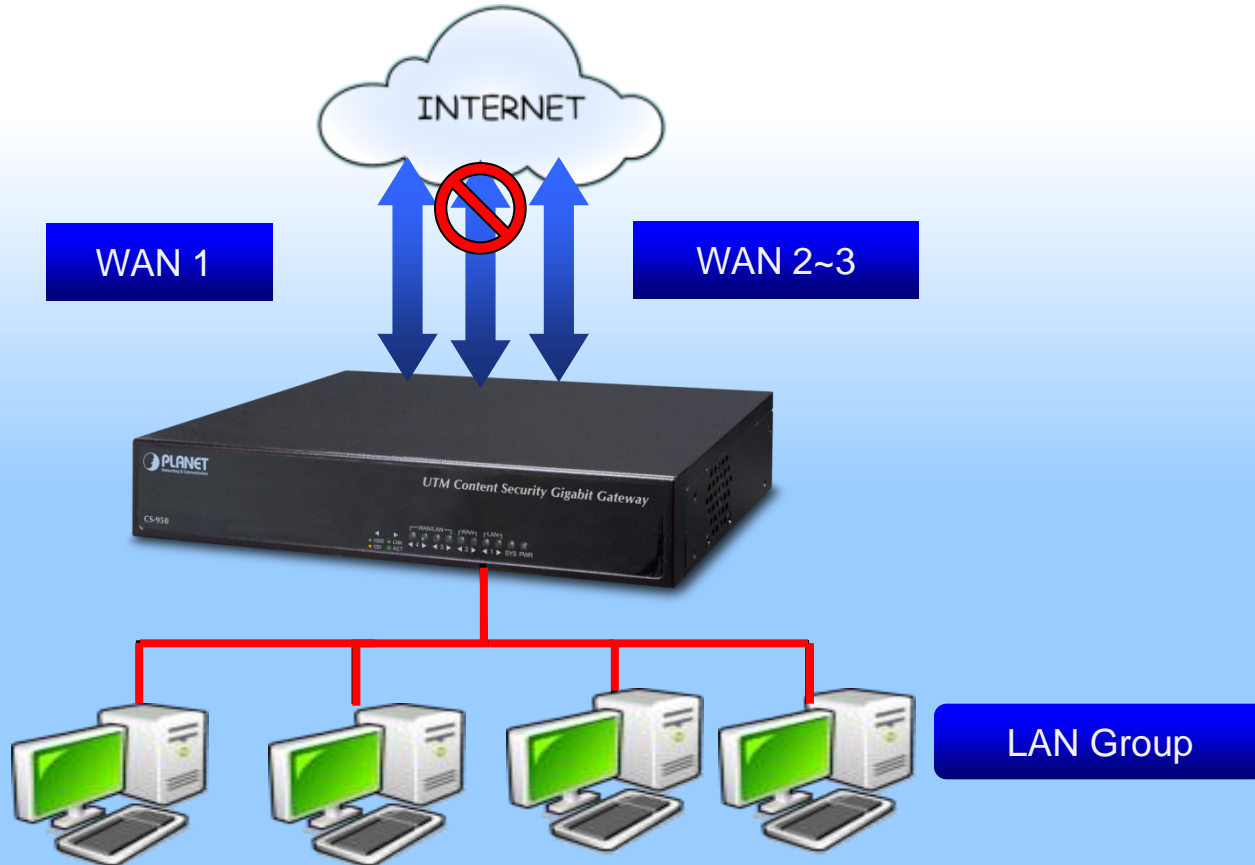


LAN Group

# Product Advantages

## ◆ Failover

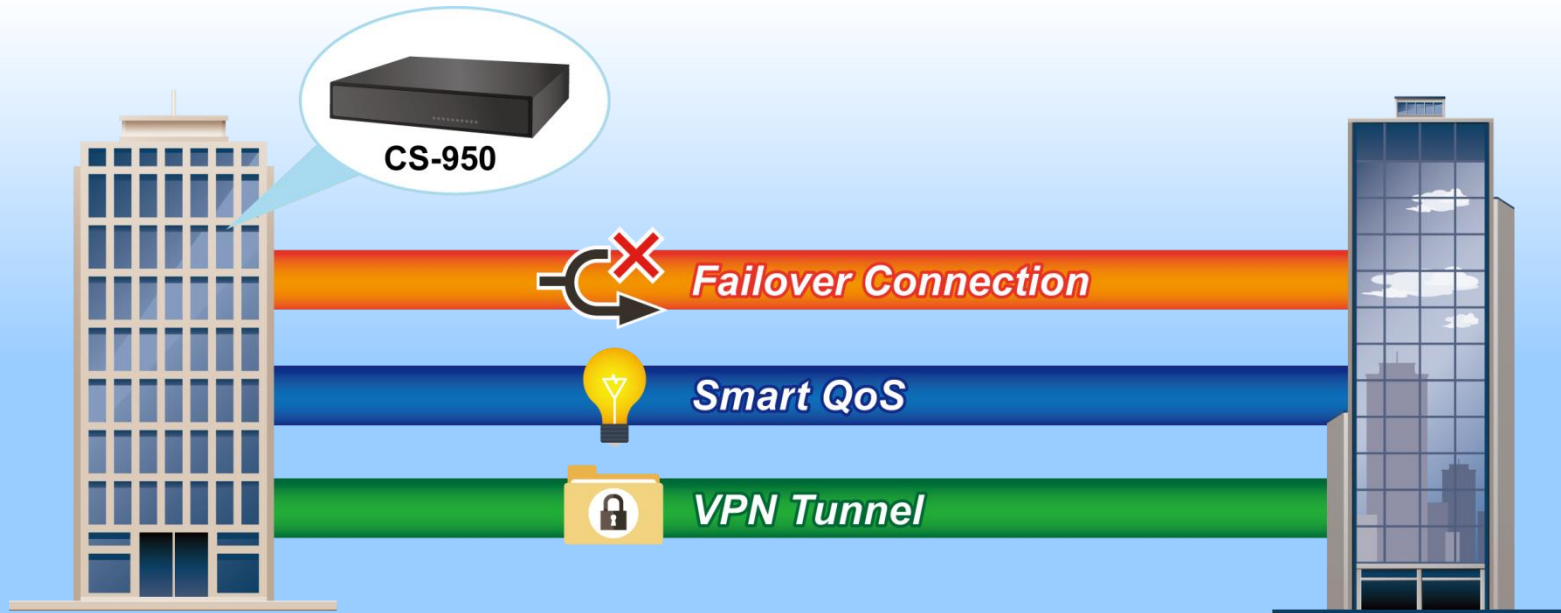
- ✓ Failover is the constant capability to automatically and seamlessly switch to other backup WAN.



# Product Advantages

## ◆ SSL VPN

- ✓ SSL VPNs are able to protect the confidentiality of network communications and cost less than IPsec VPNs.

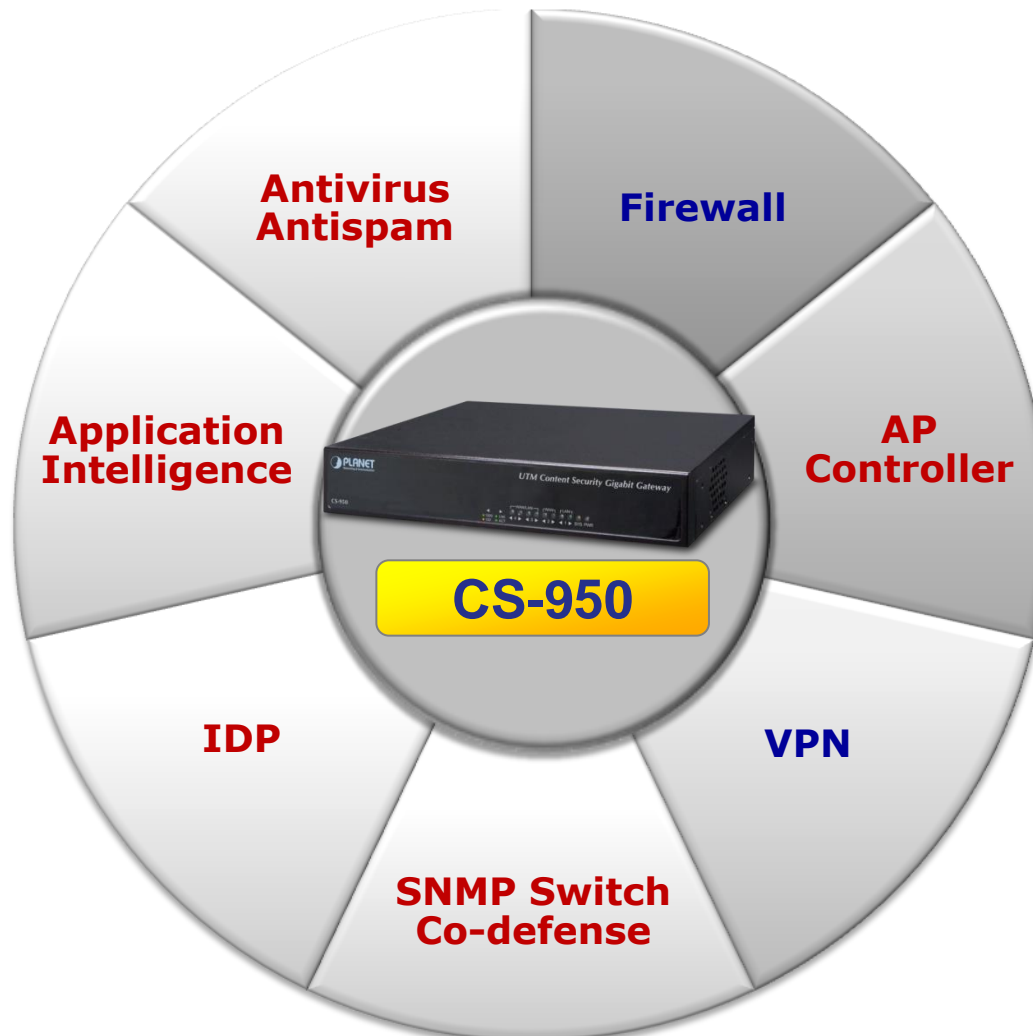


# Product Features





# Product Key Features



# Product Features

## ◆ Hardware

- ✓ **4** 10/100/1000BASE-T RJ45 interfaces
  - 1 LAN port and 1 WAN port
  - 2 undefined Ethernet port (WAN/LAN/DMZ)
- ✓ **1** Console port
- ✓ **2 USB 2.0 ports** for system configuration backup and recovery
- ✓ 12V DC jack
- ✓ Hardware reset button
- ✓ Desktop/Rack mount

# Product Features

## ◆ High System Performance

- ✓ Max. Firewall Throughput: **1800Mbps**
- ✓ Max. Connections: **1,200,000**
- ✓ Max. VPN Throughput: **90Mbps**

## ◆ Firewall Security

- ✓ **SPI** (Stateful Packet Inspection) firewall
- ✓ Blocking **DoS/DDOS** attack
- ✓ Internal firewall
- ✓ IP address block
- ✓ Anti-ARP spoofing

# Product Features

## ◆ Mail Security

- ✓ **Antivirus** base on auto-update antivirus engine
- ✓ Built-in multiple **antispam** algorithms, auto learning, and personal blacklist/whitelist
- ✓ Mail log

## ◆ Advance Security

- ✓ **IDP** (Intrusion Detection and Prevention)
- ✓ **User Authentication**
- ✓ Switch co-defense
- ✓ Anomalous IP traffic analysis

# Product Features

## ◆ Content Filtering

- ✓ Block website by **URL, IP, Domain or FQDN**
- ✓ **Application control** (BT, WhatsApp, and more)
- ✓ User defined **Blacklist and Whitelist**.

## ◆ VPN

- ✓ Supports **IPSec, PPTP server and client, L2TP, SSL**
- ✓ Max. Connection Tunnel Entries: **500** IPSec VPN tunnels, **200** PPTP VPN tunnels, **200** L2TP VPN tunnels or **50** SSL VPN tunnels
- ✓ Encryption methods: DES, 3DES, AES, AES-128/192/256
- ✓ Authentication methods: MD5, SHA-1, SHA-256, SHA-512
- ✓ **Failover**

# Product Features

## ◆ Network

- ✓ **Outbound load balance**
- ✓ **Failover for WAN**
- ✓ **IPv4/IPv6**
- ✓ **Planet DDNS/Planet EasyDDNS**
- ✓ **SNMP/VLAN/Radius**

## ◆ QoS

- ✓ **Smart QoS**
- ✓ **Guaranteed bandwidth**
- ✓ **Maximum bandwidth**
- ✓ **Priority**
- ✓ **Policy mode**



# Product Features

## ◆ Others

- ✓ **AP Management**
- ✓ **CMS (Central Management System)**
- ✓ **High Availability mode**
- ✓ **System/network flow/traffic ranking graphical reports**
- ✓ **Watch-Dog**
- ✓ **Support USB backup & restore configuration**

# Applications

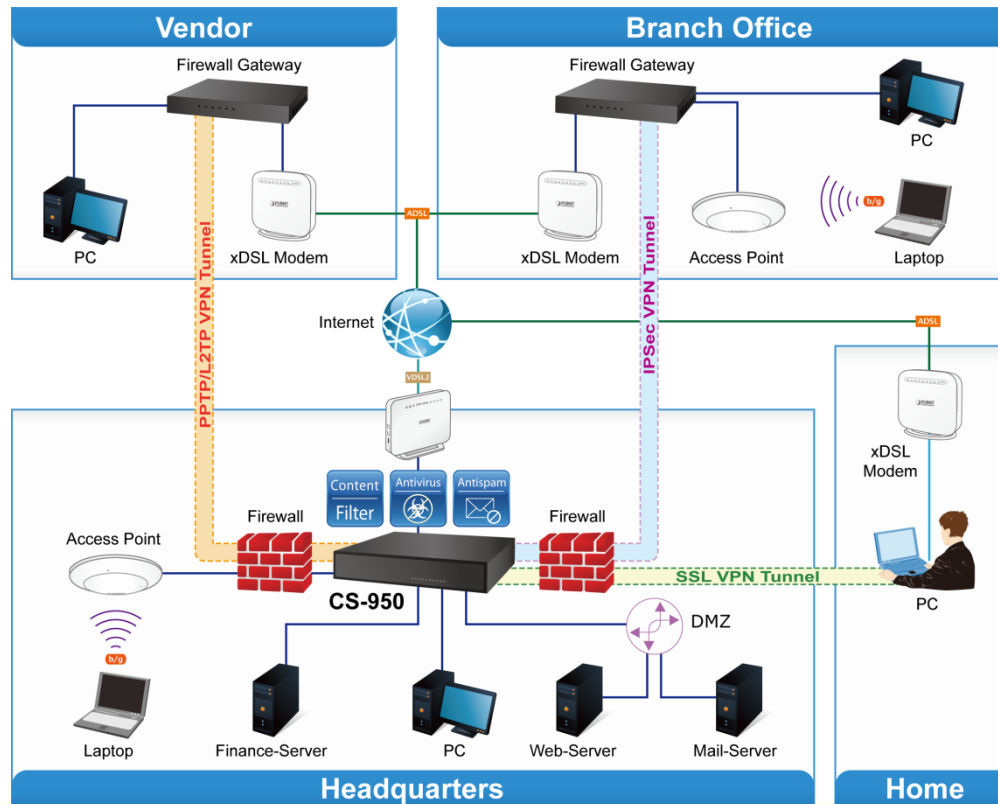




# Applications

## ◆ UTM Content Security Gateway Installation

- ✓ With VPN solutions, the CS-950 provides secured data communication for branches, vendors, and mobile workers with a flexible way to connect back to the headquarters.





# Comparison Table





# Comparison Table

Model	CS-950	MH-2300
Product Photo		
Hardware		
Network Port	4 x 10/100/1000BASE-T RJ45	5 x 10/100/1000BASE-T RJ45
Console Port	Yes	-
USB Port	2	-
System		
Max. Concurrent Session	1,200,000	25,000
Max. Firewall Throughput	1800Mbps	300Mbps
Max. VPN Throughput	90Mbps	20Mbps
Watch-Dog	Yes	Yes
Central Management System	Yes	-
HA (High Availability) mode	Yes	-
AP Management	Yes	-



# Comparison Table

Model	CS-950	MH-2300
Product Photo		
Security		
Antivirus	Yes	-
Antispam	Yes	-
IDP (Intrusion Detection and Prevention)	Yes	-
SPI Firewall	Yes	Yes
Internal Firewall	Yes	Yes
Anti-ARP Spoofing	Yes	Yes
Authentication	Yes	Yes
Content Filtering	Yes	Yes
Application Control	Yes	Yes
FQDN	Yes	Yes



# Comparison Table

Model	CS-950	MH-2300
Product Photo		
Network		
VLAN	Yes	-
QoS	Yes	Yes
IPv4 / IPv6	Yes	Yes
Outbound Load Balancing	Yes	Yes
Failover for WAN	Yes	Yes
Planet DDNS / Planet EasyDDNS	Yes	Yes
SNMP	Yes	Yes
Quota	Yes	Yes
Radius	Yes	Yes
Virtual Server	Yes	Yes
NTP	Yes	Yes



# Comparison Table

Model	CS-950	MH-2300
Product Photo		
VPN		
VPN Function	IPSec, PPTP server and client, <b>SSL, L2TP</b>	IPSec, PPTP server and client
IPSec VPN Tunnels (Max.)	<b>500</b>	25
PPTP VPN Tunnels (Max.)	<b>200</b>	25
SSL VPN Tunnels (Max.)	<b>50</b>	-
L2TP VPN Tunnels (Max.)	<b>200</b>	-
Encryption methods	<b>DES, 3DES, AES, AES-128/192/256</b>	DES, 3DES, AES
Authentication methods	<b>MD5, SHA-1, SHA-256, SHA-512</b>	SHA-1, MD5

# Appendix



# Appendix Sales Targets

## ◆ Target Markets

- ✓ SMB office
- ✓ Reseller
- ✓ SOHO



## ◆ Recommended Solutions

- ✓ CS-2001, MH-2300
- ✓ WDAP-702AC, WBS-200N








# Appendix



## ◆ Related VPN Firewall Products:







Model Name		Description
MH-2300		Gigabit Multi-Homing VPN Security Gateway

## ◆ Related Layer 3 Switch Products:

Model Name		Description
XGS3-24042		Layer 3 24-Port 10/100/1000T + 4-Port 10G SFP+ Stackable Managed Switch
XGS3-24242		Layer 3 24-Port 100/1000X SFP + 16-Port shared TP + 4-Port 10G SFP+ Stackable Managed Switch

# Appendix

## ◆ Related **Wireless AP** Products:

Model Name		Description
WDAP-702AC		1200Mbps Dual Band 802.11ac Outdoor Wireless AP
WBS-200N		300Mbps 802.11n Outdoor Wireless CPE
WBS-502AC*		900Mbps 802.11ac Outdoor Wireless CPE
WAP-200N*		300Mbps 802.11n Outdoor Wireless AP
WAP-500N*		300Mbps 802.11n Outdoor Wireless AP
WBS-500N*		300Mbps 802.11n Outdoor Wireless CPE

\*CS-950 will support in the future



# ACTIVATING IP POWER