



ANPR Enforcement Camera

CONTENTS

- Product Overviews
- Product Features
- Sales Information





Product Overviews

Naming Rule

DHI-ITC 3 0 2-R U 1 A-IR L

ITC

Intelligent Traffic Camera

Resolution

1 : 1MP
2 : 2MP
3 : 3MP
.....

Sensor Category

0-CCD
1-Entry-level CMOS
3-Middle-level CMOS
5-High-level CMOS

Reserved

Extension

IR-Support ICR cut
T-Dual lens
L-Lighting
F-Fixed lens focus
Z-Flip Vertical
Z10-10 times zoom.

Generation of Platform

R/T (ANPR and Traffic flow)
• A: Sensor A

Generation of sensor

1: 1st generation sensor

Appearance

U : Unit
F : fixed camera
H : Dome camera
W : Water-proof

Industry

R : Police /Traffic ANPR
P : Parking
T : Traffic flow

Hardware Characteristic

- **CCD image sensor**, high color reduction degree, high sensitivity, video frame 25fps
- **Built-in** lamp, cooling-fan, heater, anti-thunder to make the **installation easier**
- ANPR E-police **All-in-One** device
- High performance multicore processor
- 3 or 6 MegaPixels Auto ICR /Color/B/W
- Variety of signal, data and communication interface
- **Saving 30% power consumption** compared to traditional solutions
- Working temperature $-40^{\circ}\text{C} \sim +80^{\circ}\text{C}$, humidity 10%~90%



ITC302/602-RU1A-L /IRL

Software Characteristic

- **Automatic control** (P-IRIS drive)
- **Built-in** a variety of algorithms, such as license plate recognition, color recognition, velocity measurement by video and so on
- More than **98%** vehicle capture rate, up to **95%** ANPR rate
- Support H.264H, H.264M, H.264B, MJPEG
- I/O loop trigger, RS485 loop trigger, radar trigger, video detection
- OSD information superimposed
- Video/Image with watermark tech and check function



ITC302/602-RU1A-L/IRL



2



Product Features

Product Features



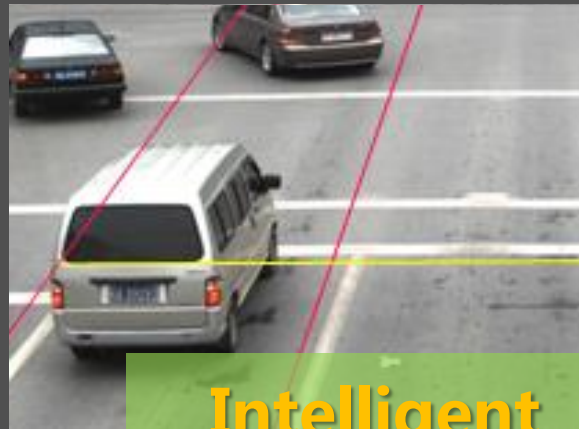
Easy To Use



Eye Harmless



High Image Quality



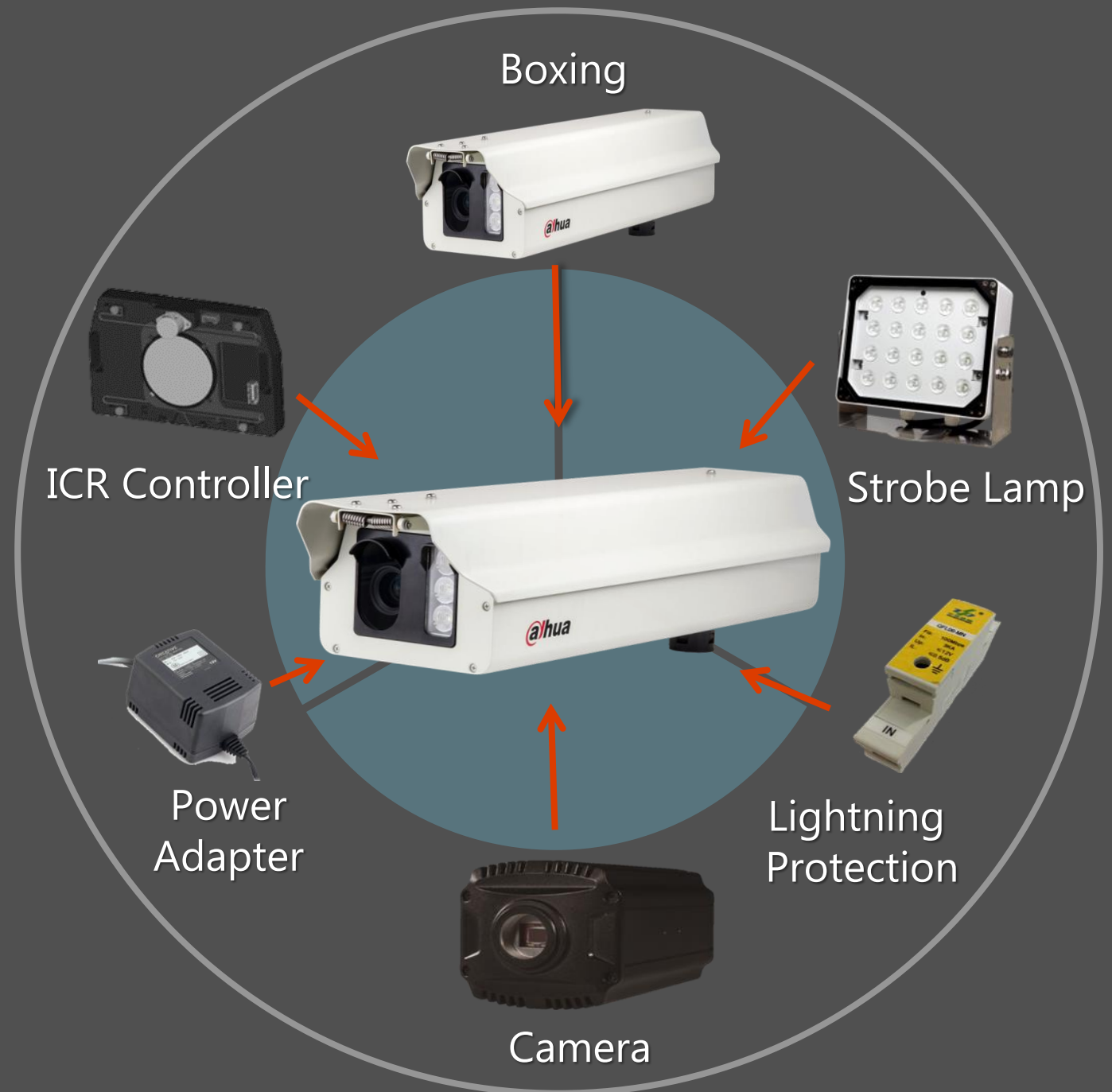
Intelligent



Industry Design

Easy To Use

- **Built-in** fan/ heater/ lightning protection/lamp and other modules
- Improve the stability and standardization of system, make the **installation easier**



Easy To Use

- Optional **front** and **side installation** to meet the different requirement

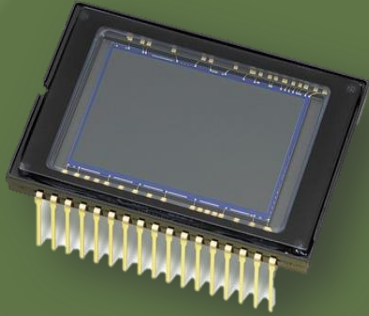


Eye Harmless



- Daytime: Colorful pictures due to the light filtering technology
- Night time: No light pollution since IR solution used

High Image Quality



➤ **CCD Global Shutter**

Fit for high-speed vehicle.
In night time , low Light situation , shutter increase

➤ **P-Iris Lens**

P-Iris lens, promote image quality by improving the depth of field



➤ **Optimized ISP Algorithm**

It make perfect for road traffic scenes.
The technical improved the follow aspects: Reflect light/ Back light/ Noise/ Smear optimization.

Intelligent

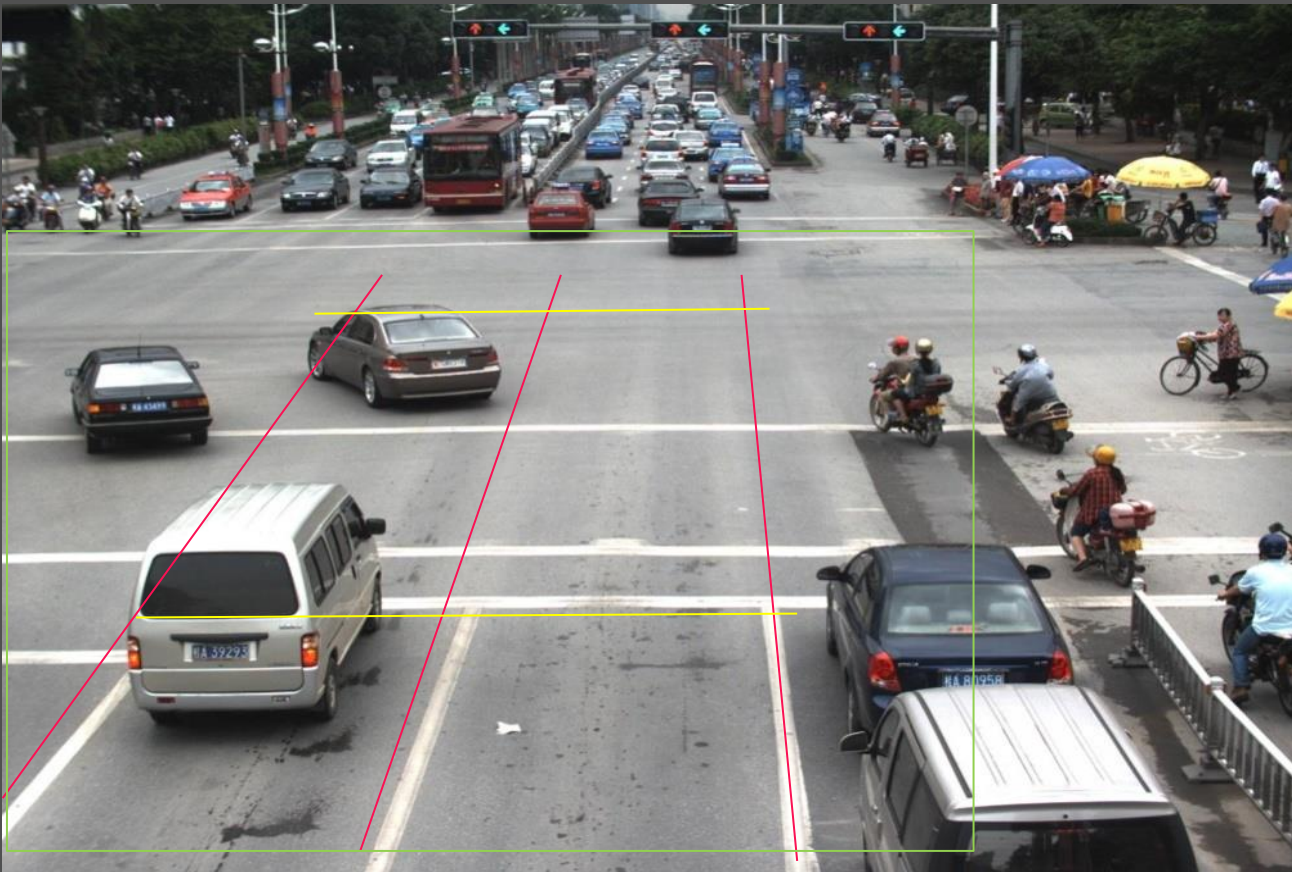
Index	Event Type	Capture Time	Lane	Plate	Plate Color	Country	Speed(km/h)	Vehicle Type
80	ANPR	2016-05-11 13:33:34	1	BG870MŽ	Blue	SRB	31	Unknown
89	ANPR	2016-05-11 13:33:09	1	TO010VA	Blue	SRB	12	Unknown
88	ANPR	2016-05-11 13:32:25	1	VA044II	Blue	SRB	29	Unknown
87	ANPR	2016-05-11 13:31:53	1	SD008ČE	Blue	SRB	10	Unknown
86	ANPR	2016-05-11 13:31:44	1	NI134JX	Blue	SRB	27	Unknown

95%

- **For most countries:** Up to 95% vehicles license plate recognize rate.



Intelligent



- **Dual-Core DSP design**, meet the high frame rate encoding requirement of high definition video
- Various Intelligent Function, support detecting red light violation, cross the lane, wrong way driving, turn restriction etc.

Industry Design



- Designed for maximum: **heat dissipation**
- Working temperature: **-40 °C ~ 80 °C**



- Wide voltage range: **AC90V-AC300V**
- **Dual Ethernet ports**, physical isolation



3

Sales Information



Third Part Cooperation

APIs



Onvif



CGI



- Dahua have done compatibility with **50+** certificated Partners. They can choose APIs/ Onvif/ CGI for fast integration. It makes customers have more choices.

Order Information

PN	Model	Built-in	Cover
1.0.01.09.10743 (DHI) 1.0.01.09.10745	ITC302-RU1A-L	White light	1~2 lanes
1.0.01.09.10516(DHI) 1.0.01.09.10523	ITC302-RU1A-HL	White light、heater	1~2 lanes
1.0.01.09.10747(DHI) 1.0.01.09.10749	ITC302-RU1A-IRL	IR light	1~2 lanes
1.0.01.09.10529(DHI) 1.0.01.09.10536	ITC302-RU1A-IRHL	IR light、heater	1~2 lanes
1.0.01.09.10751(DHI) 1.0.01.09.10752	ITC602-RU1A-L	White light	1~3 lanes
1.0.01.09.10646 (DHI) 1.0.01.09.10524	ITC602-RU1A-HL	White light、heater	1~3 lanes
1.0.01.09.10753(DHI) 1.0.01.09.10754	ITC602-RU1A-IRL	IR light	1~3 lanes
1.0.01.09.10647(DHI) 1.0.01.09.10537	ITC602-RU1A-IRHL	IR light、heater	1~3 lanes



Make Your Life Safer !