

HDCVI PTZ Camera



4 the future





Ultra series



Pro series



Lite series



Ultra series



Who am I ?



Ultra Series | Project oriented

Ultra starlight
0.002Lux@F1.5

Best performance
WDR/200m IR/Wide tilt range

IP67/IK10/8KV lighting
Perfect protection

Wide view field
Large optical zoom

Ultra series



What can I do?



Ultra starlight

Featured with Dahua ultra starlight technology,
it can provide clear and bright picture in the night.

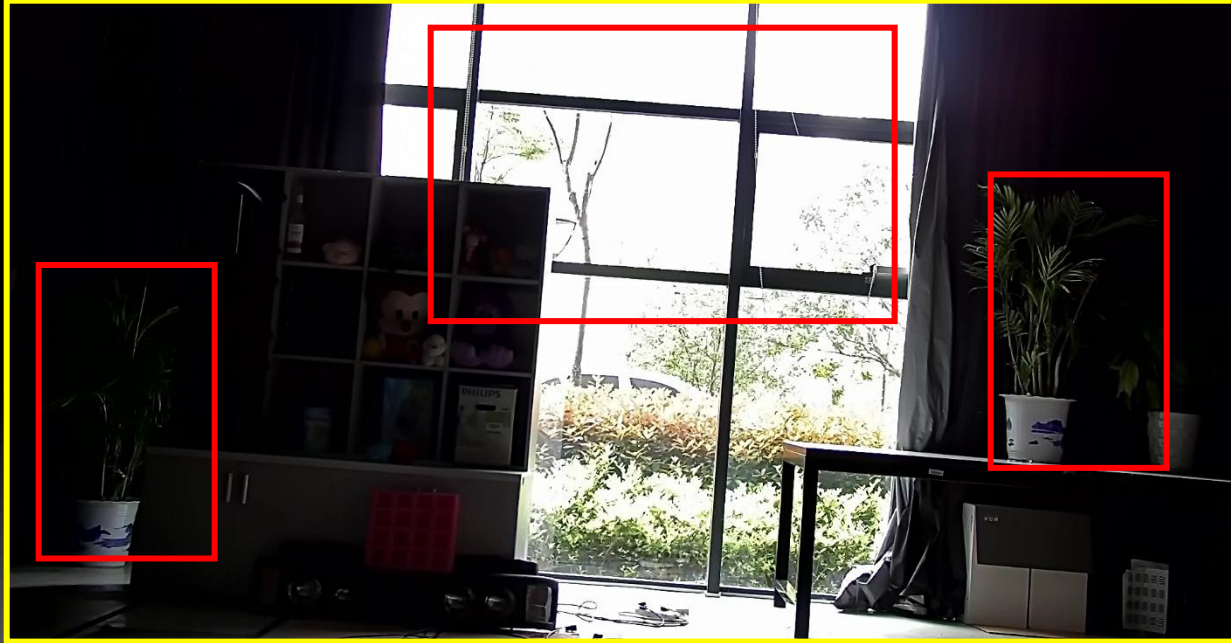


Ultra starlight

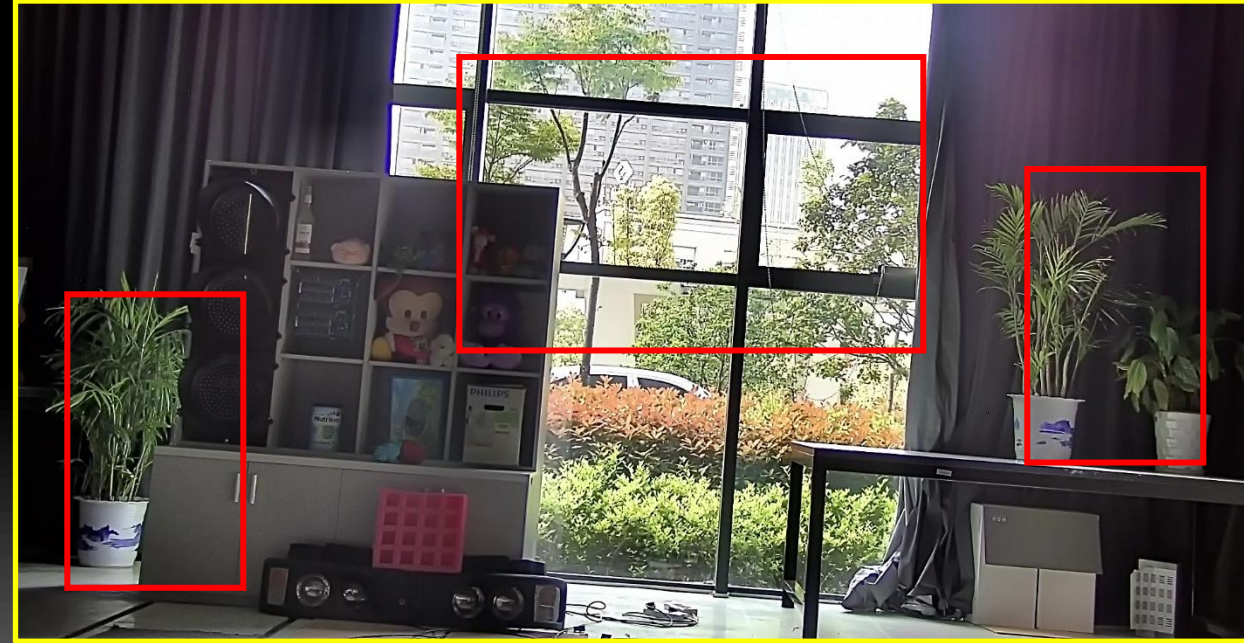


Normal camera

True WDR



WDR OFF



WDR ON

WDR can adjust the video brightness when the contrast between the strong light region and dark light region is too high, especially useful for the monitoring outside with intense backlight.

IR distance: 200 m



150 m



200 m

-20° ~90° tilt range

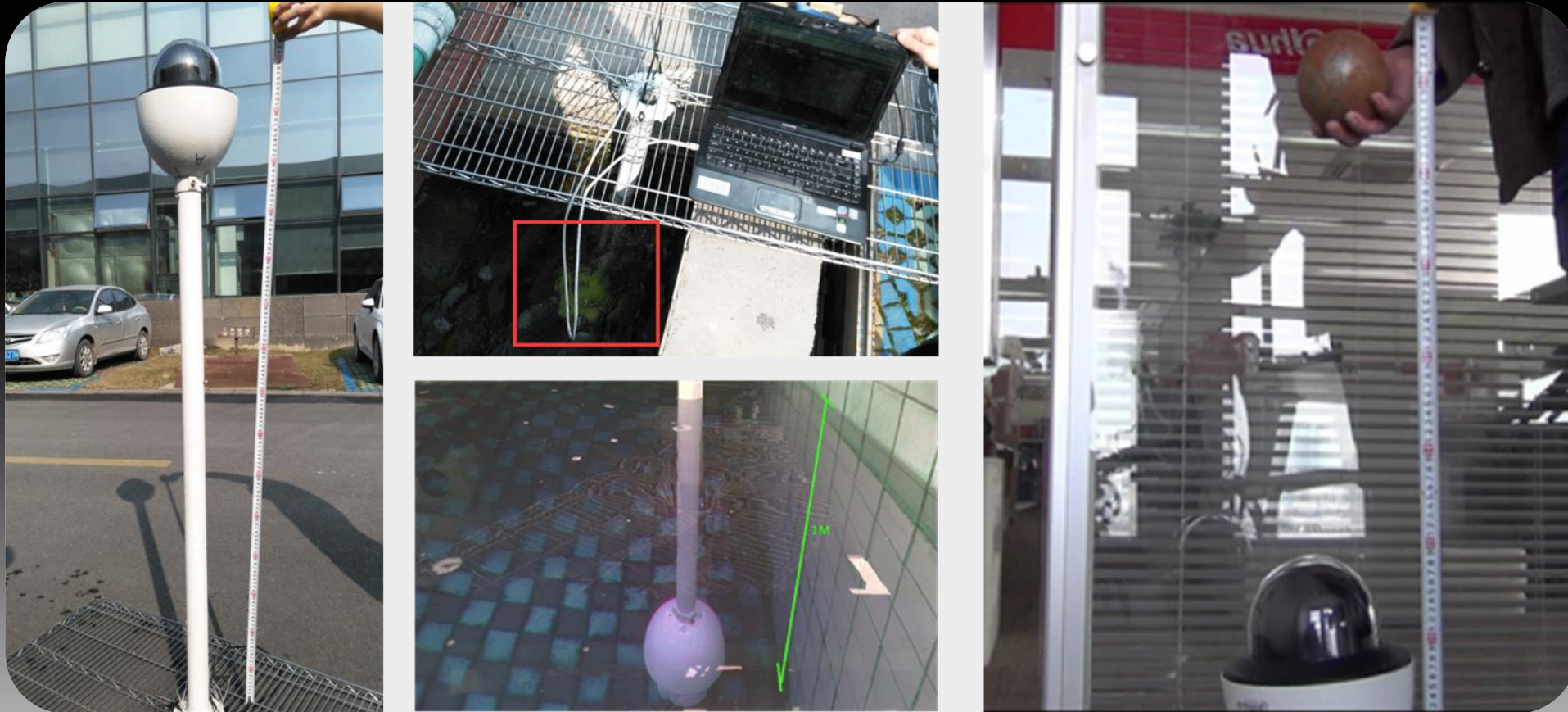
-20°



Wide view field: even you are in the sky

Perfect protection

IP67 and IK10 can provide the best protection for the PTZ cameras, prevent cameras from attacked by waters in the rainy days and vandalism.

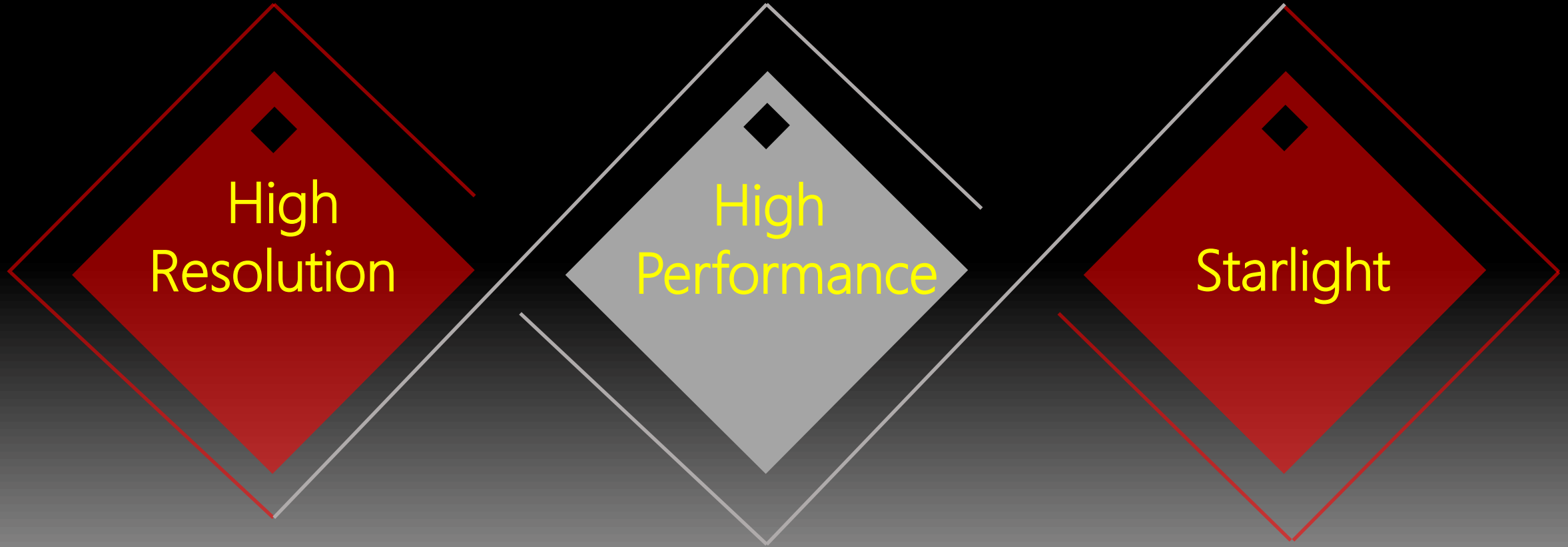


Pro series

Who am I ?



Pro Series | High performance



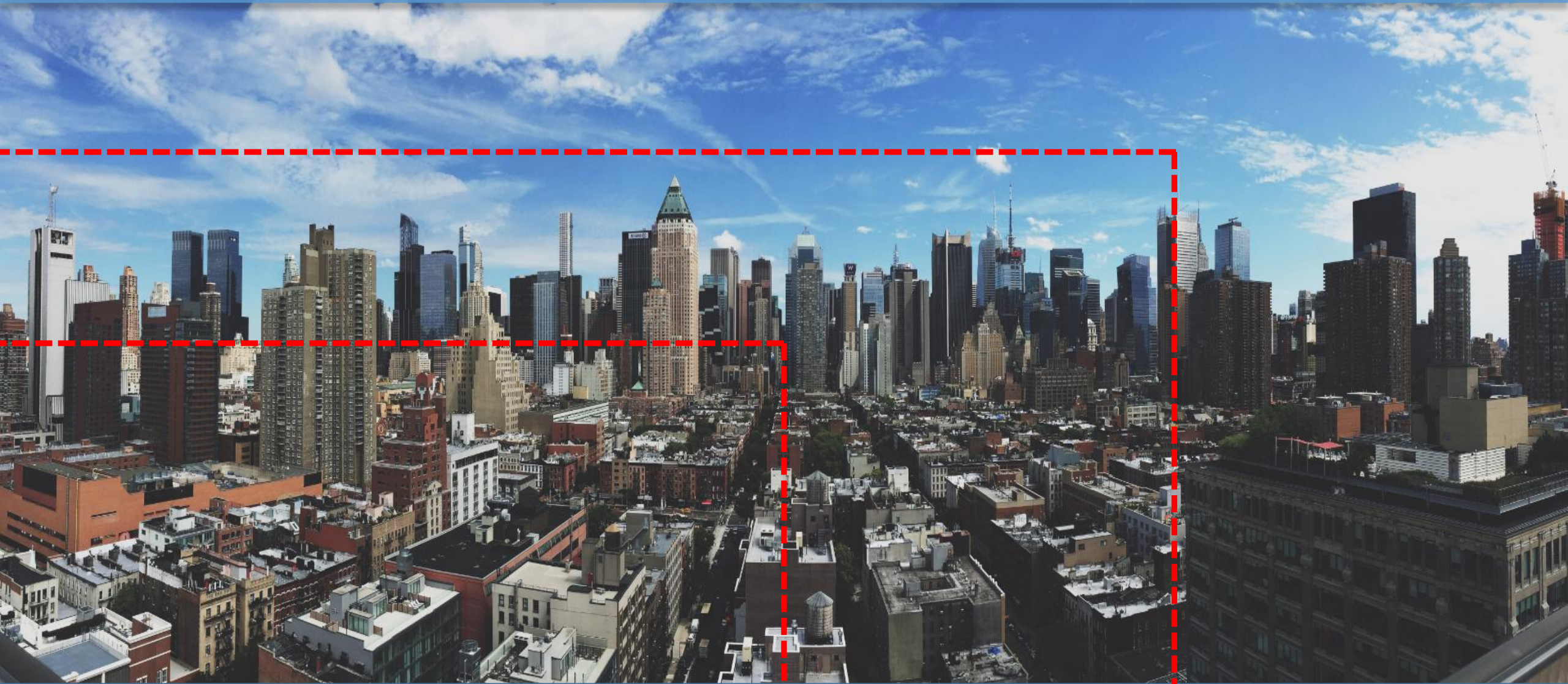
Pro series



What can I do?



Resolution | Wide view field



720P

1080P

4Mp

High resolution

- Resolution: 4Mp
- Optical zoom: 30x
- WDR: 120dB
- Easy of use: 4 in 1
HD/SD switchable



SD60430I-HC



SD6C430I-HC



SD59430I-HC



SD50/52C430I-HC



How to switch HD/SD?

3 Product Function

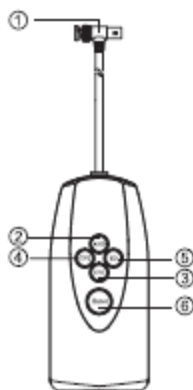


Figure 3-1

Operation steps:

Step 1

Please press "Enter" button first to awaken UTC controller when switching video output mode;

Step 2

The four indicator lights are on for 1 second when the UTC controller is awakened, the corresponding indicator light of "Enter" button is on after detecting the current video mode;

Step 3

Long press the mode button till the current indicator light is off, which means the mode has been successfully switched.

Step 4

Long press "Enter" button + CVI button to implement A/B mode switch;

Note:

A mode: It can realize switch among four modes of CVI, CVBS, AHD and TVI, it is A mode by default when power is on;

B mode: It can implement OSD control and motorized varifocal function control in CVBS mode. Different video modes are corresponding colors of indicator lights of the "Enter" button, please refer to the following sheet for more details.

SN	Name	Function
1	BNC male and Female connector	It is to connect to HCVR video channel and HDCVI camera.
2	AHD button	AHD mode switch, it's corresponding to blue indicator light.
3	CVI button	CVI mode switch, it's corresponding to orange indicator light.
4	TVI button	TVI mode switch, it's corresponding to green indicator light.
5	SD button	CVBS mode switch, it's corresponding to red indicator light.
6	Enter button	Awaken controller via this button. Note: If there is no operation within 30 seconds, the indicator light of Enter button will be off, UTC will enter the low power consumption mode.
6+3 combinator		Switch between A and B mode, and the red indicator light is normally on or flashes. Note: In CVBS mode, press Enter button + CVI button for 3s, the corresponding red indicator light of SD button changes from normally on to flash, which means that A mode is switched to B mode; In CVBS mode, press Enter button + CVI button for 3s, the corresponding red indicator light of SD button changes from flash to normally on, which means that B mode is switched to A mode.

Note:

- Currently it only supports the cameras with multiple video modes functions.
- Please make sure the OSD menu is off before switching modes.
- It is recommended to take out the batteries if the UTC hasn't been used for a long time.

Note:

- This manual is for reference only. Slight difference may be found in the user interface.
- All the designs and software here are subject to change without prior written notice.
- All trademarks and registered trademarks mentioned are the properties of their respective owners.
- If there is any uncertainty or controversy, please refer to the final explanation of us.
- Please visit our website or contact your local service engineer for more information.



ZHEJIANG DAHUA VISION TECHNOLOGY CO., LTD.

Address : No.1199 Bin'an Road, Binjiang District, Hangzhou, P.R.China

Postcode: 310053

Tel: +86-571-87688883

Fax: +86-571-87688815

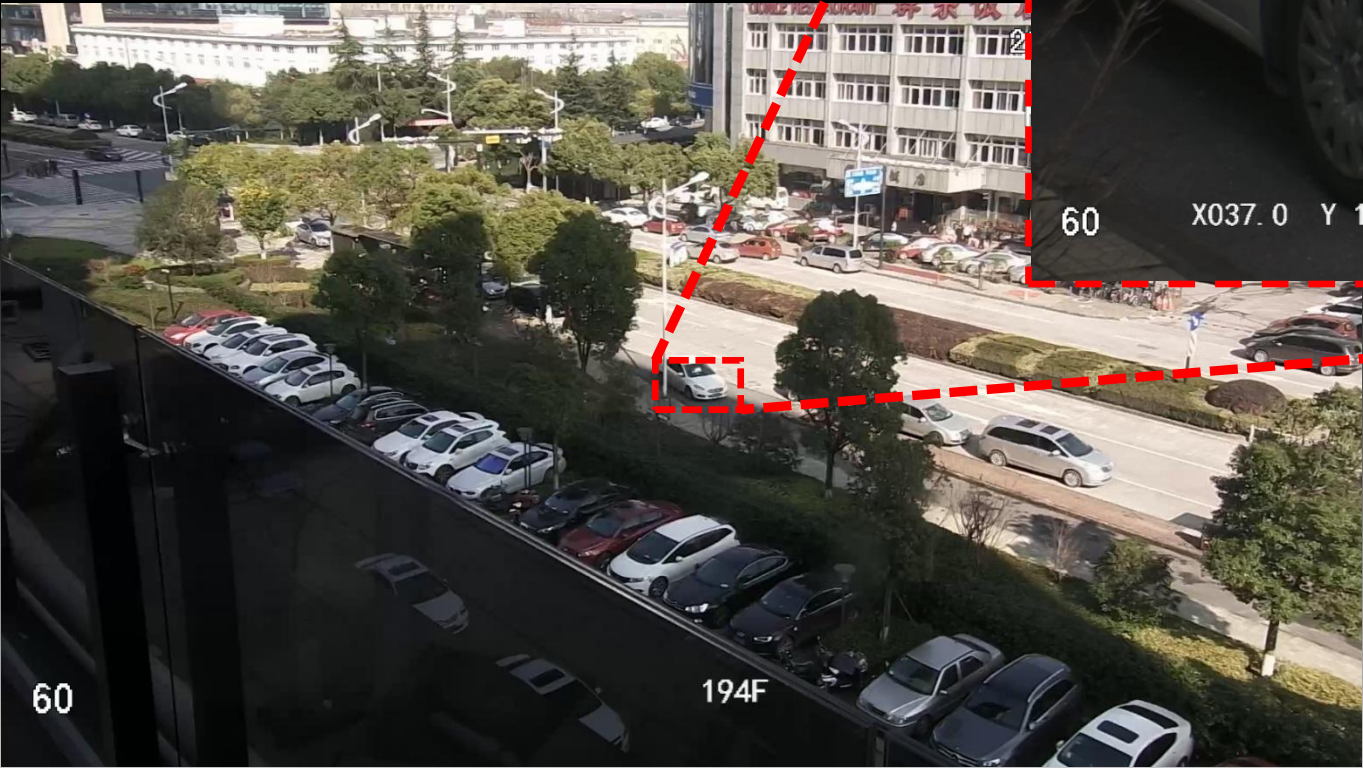
Email: overseas@dahuatech.com

Website: www.dahuasecurity.com



UTC controller

30x optical zoom



Starlight

- Resolution: 1080P/720P
- Optical zoom: 30x/25x/31x
- WDR: 120dB
- Starlight: 0.005Lux/F1.6
- Easy of use:
HD/SD switchable
(Hardware switch)



SD60230I-HC-S2
SD60225I-HC-S2



SD6C230I-HC-S2
SD6C225I-HC-S2



SD59230I-HC-S2
SD59225I-HC-S2



SD50/52C230I-HC-S2
SD50/52C225I-HC-S2



SD50/52C131I-HC-S2

SD60131I-HC-S2

SD6C131I-HC-S2

SD59131I-HC-S2

Lite series



Who am I ?



Lite Series | Best for channel market



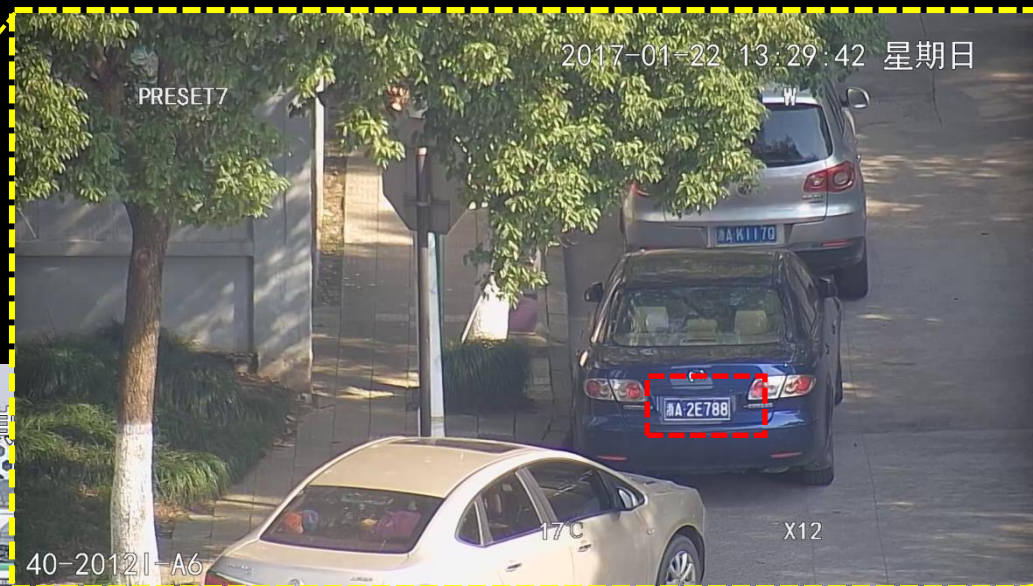
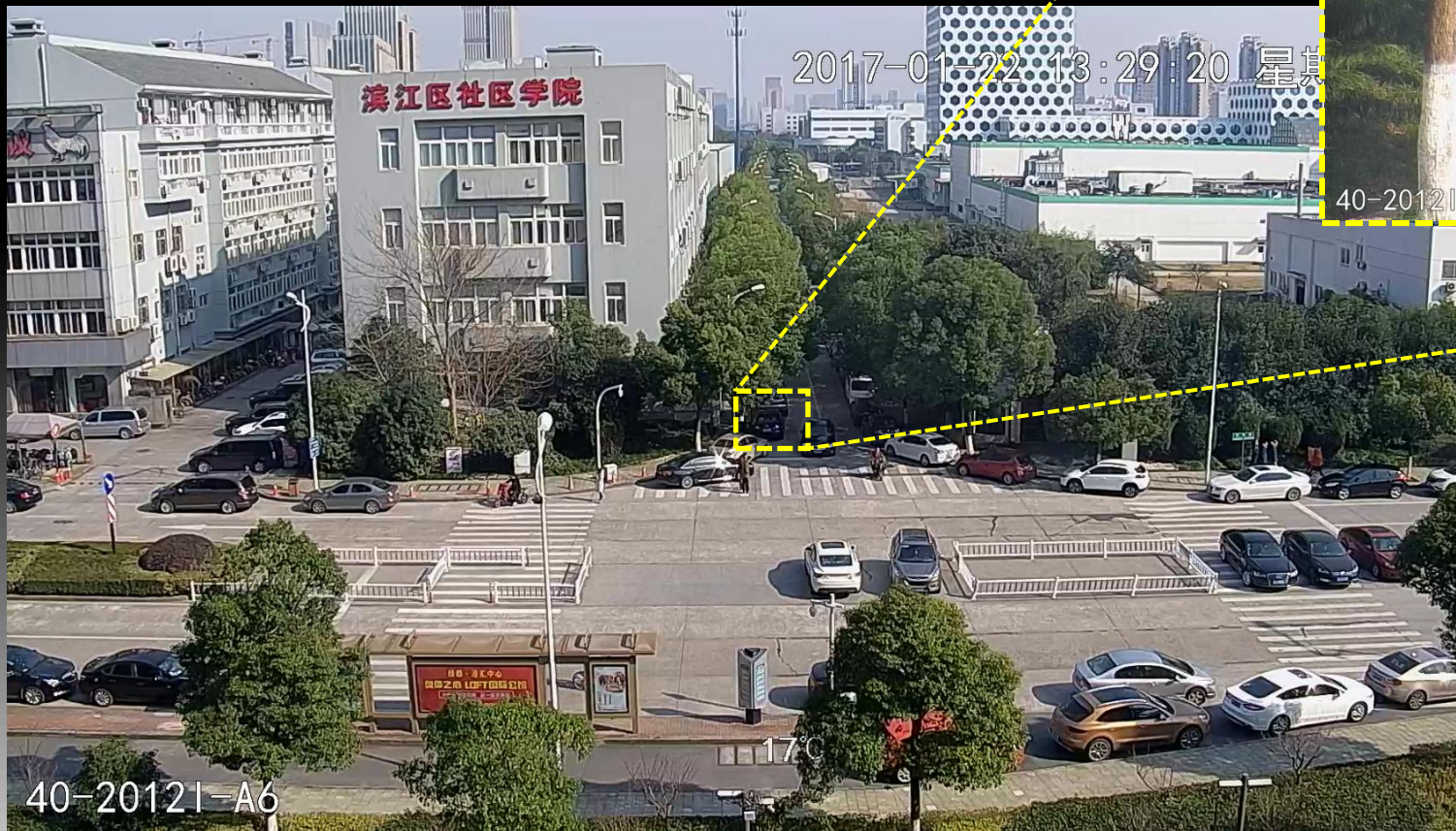
Lite series



What can I do?



12x Optical zoom



浙A·2E788

4 in 1 (HDCVI/TVI/AHD/SD)

3 Product Function

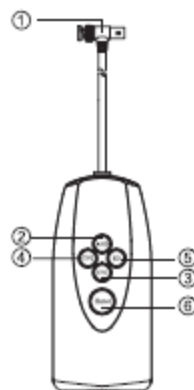


Figure 3-1

Operation steps:

Step 1

Please press "Enter" button first to awaken UTC controller when switching video output mode;

Step 2

The four indicator lights are on for 1 second when the UTC controller is awakened, the corresponding indicator light of "Enter" button is on after detecting the current video mode;

Step 3

Long press the mode button till the current indicator light is off, which means the mode has been successfully switched.

Step 4

Long press "Enter" button + CVI button to implement A/B mode switch;

Note:

A mode: It can realize switch among four modes of CVI, CVBS, AHD and TVI, it is A mode by default when power is on;

B mode: It can implement OSD control and motorized varifocal function control in CVBS mode. Different video modes are corresponding colors of indicator lights of the "Enter" button, please refer to the following sheet for more details.

SN	Name	Function
1	BNC male and Female connector	It is to connect to HDCVR video channel and HDCVI camera.
2	AHD button	AHD mode switch, it's corresponding to blue indicator light.
3	CVI button	CVI mode switch, it's corresponding to orange indicator light.
4	TVI button	TVI mode switch, it's corresponding to green indicator light.
5	SD button	CVBS mode switch, it's corresponding to red indicator light.
6	Enter button	Awaken controller via this button. Note: If there is no operation within 30 seconds, the indicator light of Enter button will be off, UTC will enter the low power consumption mode.
6+3 combinator		Switch between A and B mode, and the red indicator light is normally on or flashes. Note: In CVBS mode, press Enter button + CVI button for 3s, the corresponding red indicator light of SD button changes from normally on to flash, which means that A mode is switched to B mode; In CVBS mode, press Enter button + CVI button for 3s, the corresponding red indicator light of SD button changes from flash to normally on, which means that B mode is switched to A mode.

Note:

- Currently it only supports the cameras with multiple video modes functions.
- Please make sure the OSD menu is off before switching modes.
- It is recommended to take out the batteries if the UTC hasn't been used for a long time.

Note:

- This manual is for reference only. Slight difference may be found in the user interface.
- All the designs and software here are subject to change without prior written notice.
- All trademarks and registered trademarks mentioned are the properties of their respective owners.
- If there is any uncertainty or controversy, please refer to the final explanation of us.
- Please visit our website or contact your local service engineer for more information.



ZHEJIANG DAHUA VISION TECHNOLOGY CO., LTD.

Address : No.1199 Bin'an Road, Binjiang District, Hangzhou, P.R.China

Postcode: 310053

Tel: +86-571-87688883

Fax: +86-571-87688815

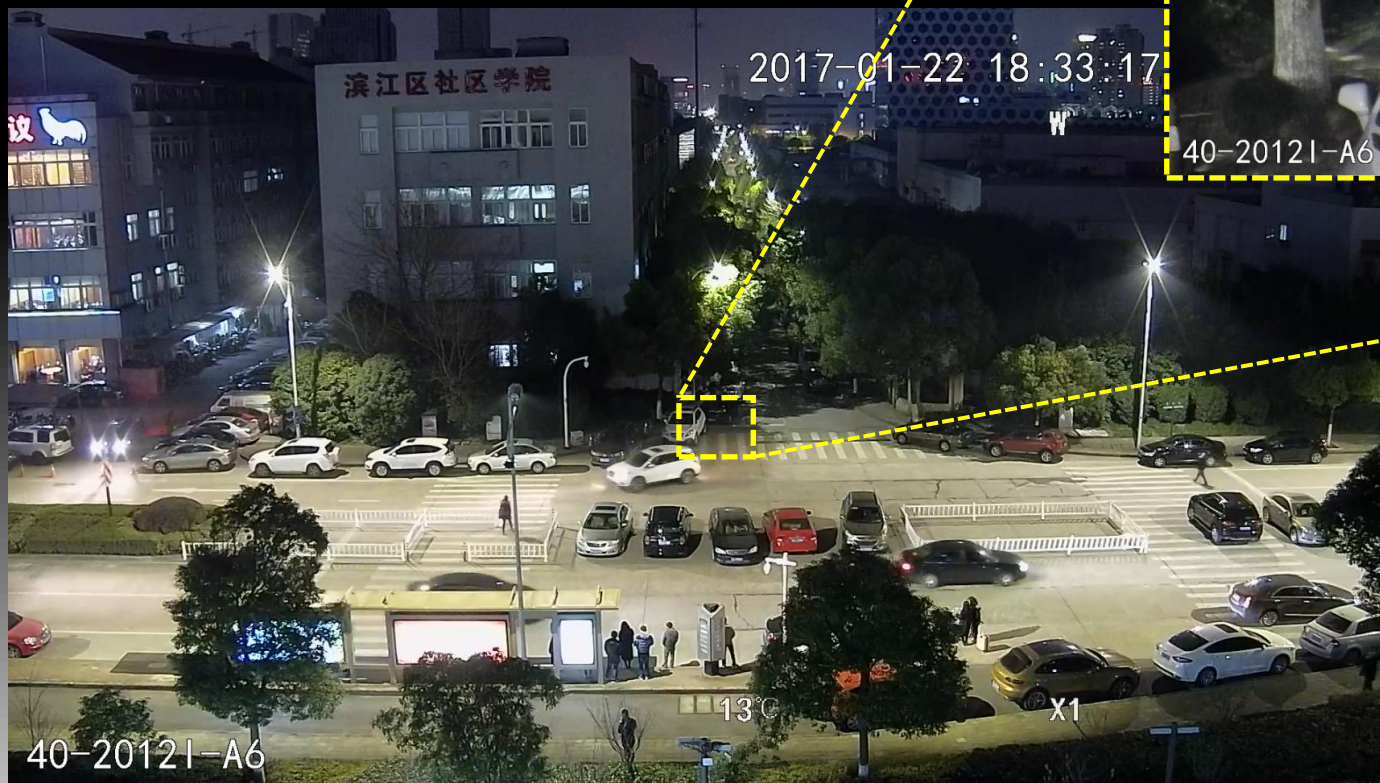
Email: overseas@dahuatech.com

Website: www.dahuasecurity.com



UTC controller

Starlight



Capture the details in the darkness

Noise Reduction

The new generation



The old generation



The NR performance is better from the live view.

Comparison

The new generation



The old generation



The image quality is better than the old generation's quality.

Mini size| Compact design

All in hand



Feature: Clear picture/ 12x/4x optical zoom

Value: Round-the-clock stable monitoring/Capture details
Easy for installation

HDCVI PTZ cameras

New impetus **4** the future

