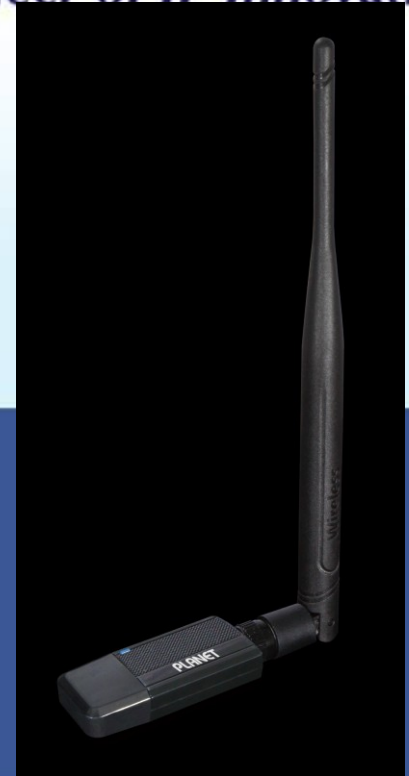


# High Power 802.11n Wireless Compact USB Adapter

**WNL-U555HA**



# Outline

- ◆ **Product Overview**
- ◆ **Product Features**
- ◆ **Operation Interface**
- ◆ **Product Application**
- ◆ **Product Comparison**
- ◆ **Appendix**



# Product Overview

Wireless Coverage

## WNL-U554M

**Dimension**  
18 x 14.4 x 6 mm  
(W x D x H)

**Weight**  
0.3g



**Ultra-Mini**

## WNL-U554

**Dimension**  
59 x 19 x 9 mm  
(W x D x H)

**Weight**



**High C/P**



## WNL-U554A

**Dimension**  
45 x 18 x 10 mm  
(W x D x H)

**Weight**  
15g

**Wide Coverage**



## WNL-U555HA

**Dimension**  
55 x 23.6 x 10 mm  
(W x D x H)

**Weight**  
37g

**High Power  
High Gain**

Dimension

# Product Overview

## ◆ View of WNL-U555HA

5dBi Detachable  
Antenna

Link / Active  
LED

USB 2.0  
Connector

23.6 mm

55 mm

SMA Connector



# Product Features

## ◆ **Wireless:**

- ✓ 2.4GHz ISM band, unlicensed operation
- ✓ Compliant with **IEEE 802.11n** wireless technology
- ✓ Backward compatible with IEEE 802.11b/g standard
- ✓ Provides up to **150Mbps** download and upload data rate
- ✓ Built-in with **5dBi** Detachable High-Gain Antenna
- ✓ High Power up to **300mW** for extending wireless coverage
- ✓ Adjustable Transmit Power maximum up to **25dBm**

## ◆ **Secure Wireless Connection**

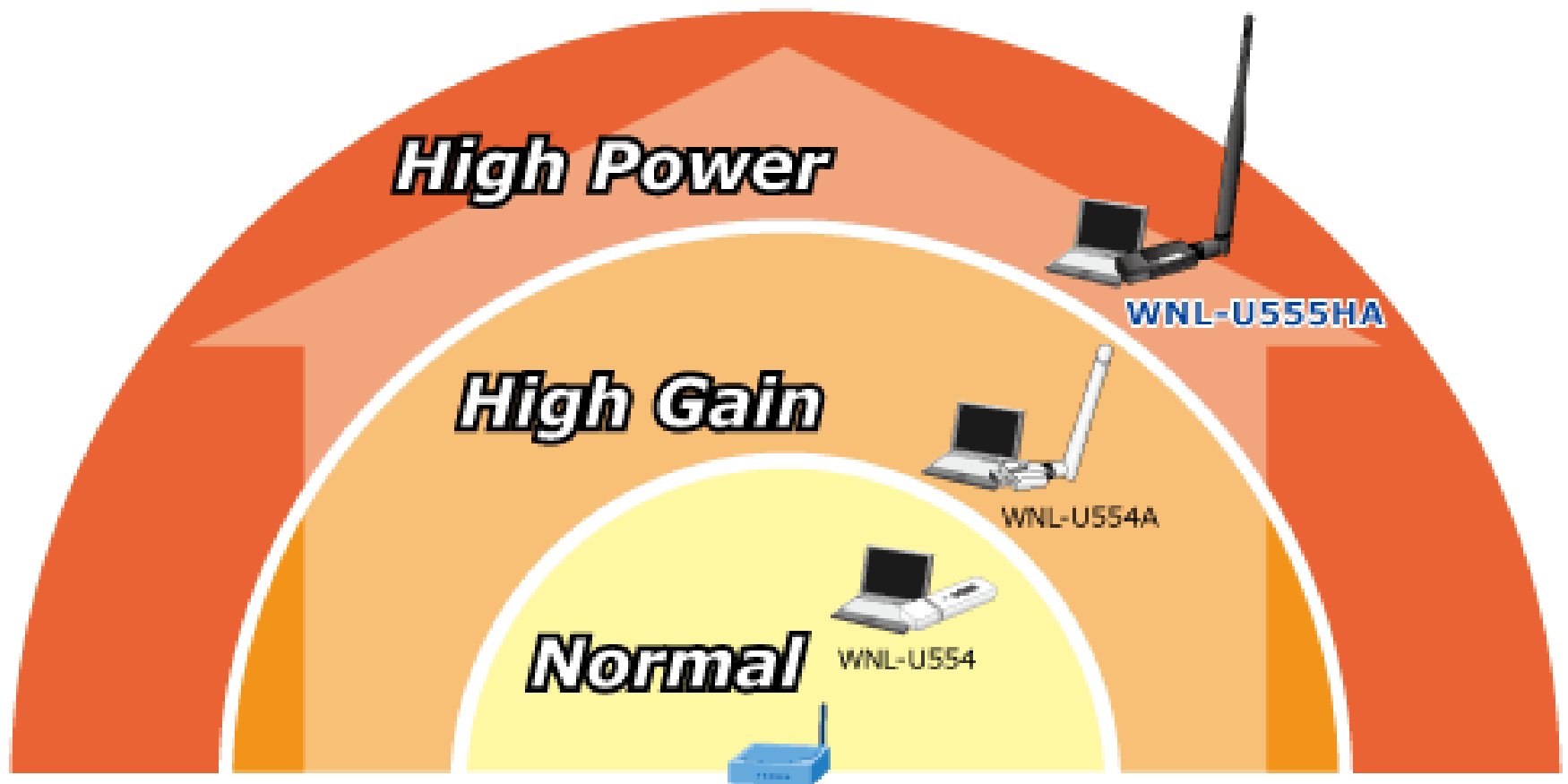
- ✓ Supports WEP 64/128-bit
- ✓ WPA/WPA2, WPA-PSK/WPA2-PSK (TKIP/AES encryption)
- ✓ IEEE 802.1x
- ✓ Supports Wi-Fi Protected Setup (**WPS**)

# Product Features

- ◆ **Supports QoS-WMM (WiFi Multi-Media) function / WMM-PS**
- ◆ **Supports Software AP mode**
- ◆ **Hardware**
  - ✓ **USB 2.0 attached interface**
  - ✓ **Portable and Compact Design**
- ◆ **Multiple OS Support:**
  - ✓ **Supports most popular operating systems including:**
    - Windows 2000, XP, Vista, Win 7,
    - Linux
    - MAC OS X

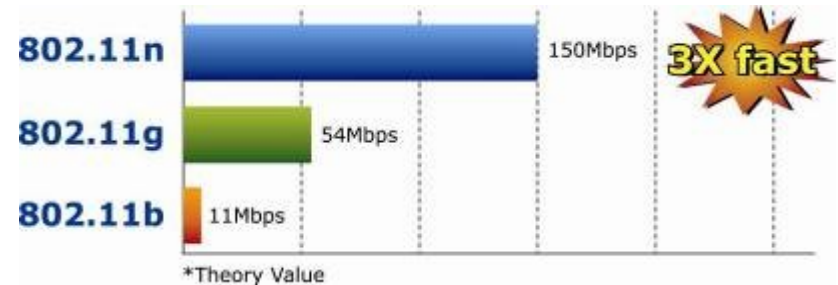
# Product Features

- ◆ High Power, High Gain, Long Distance



# Product Feature

- ◆ **Compact Size USB Adapter Boost 11n Performance**



**3x** fast performance than 802.11g  
**Compact size, Lightweight and Stylish Design**  
**Supported 3** platform (Windows, Linux, Mac) & **6**

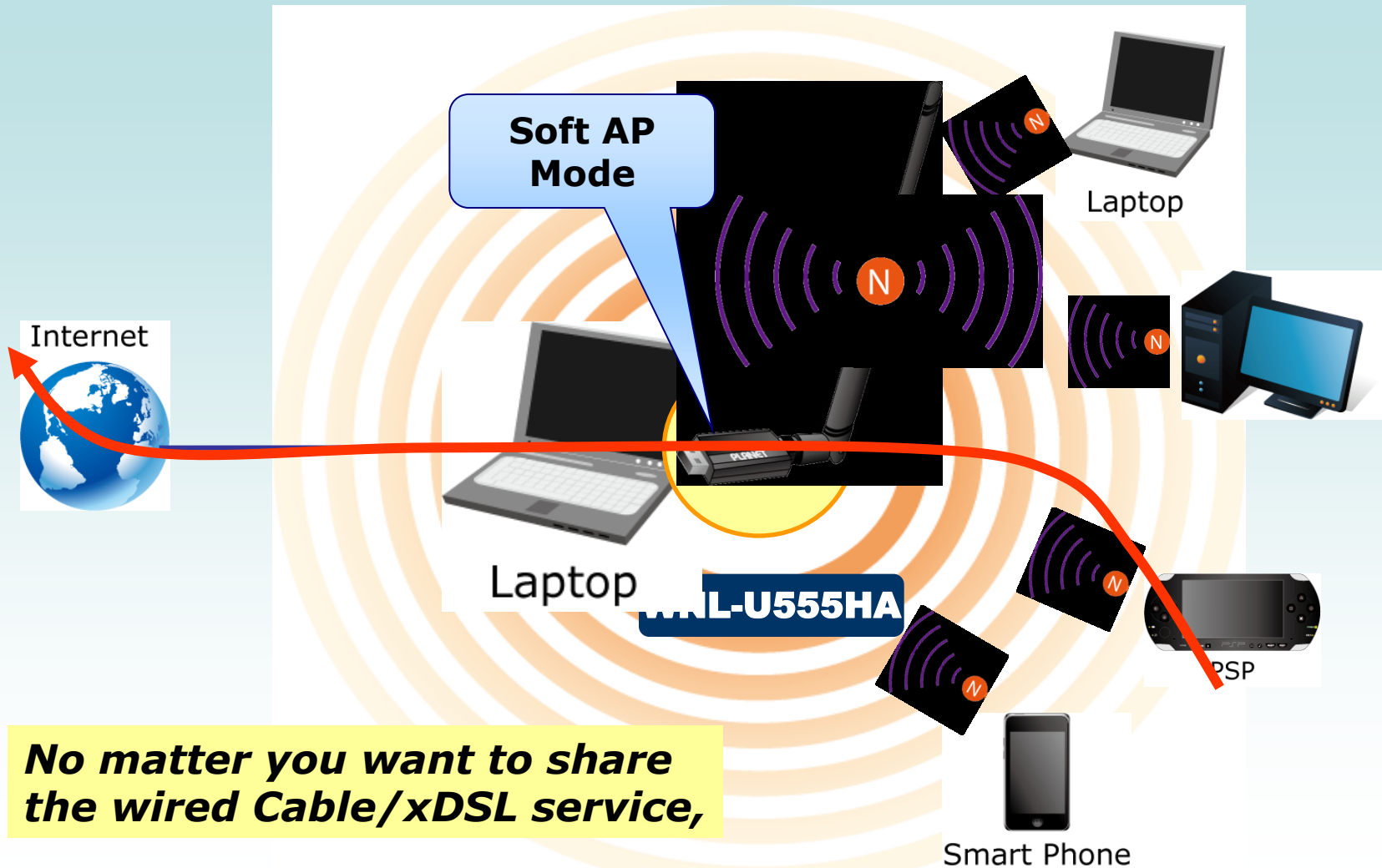


## Product Feature – Soft AP Mode

- ◆ **Software Access Point Function for Wireless Connection Sharing**
  - ✓ More than just being an adapter for PC and laptop connecting to high speed wireless network, the **WNL-U555HA** can also become a **wireless access point**.
  - ✓ By applying the **USB Wireless LAN Utility** included in the package, users can switch the WNL-U555HA operation between **Station mode** and **Access Point mode**.
  - ✓ When the WNL-U555HA is in the Access Point mode, it enables the connected Wi-Fi devices such as iPhone / Android / Symbian / Windows smart mobile phone, iPod Touch / iPad and NDS / PSP turn to a Wi-Fi Hotspot and can share wireless access.

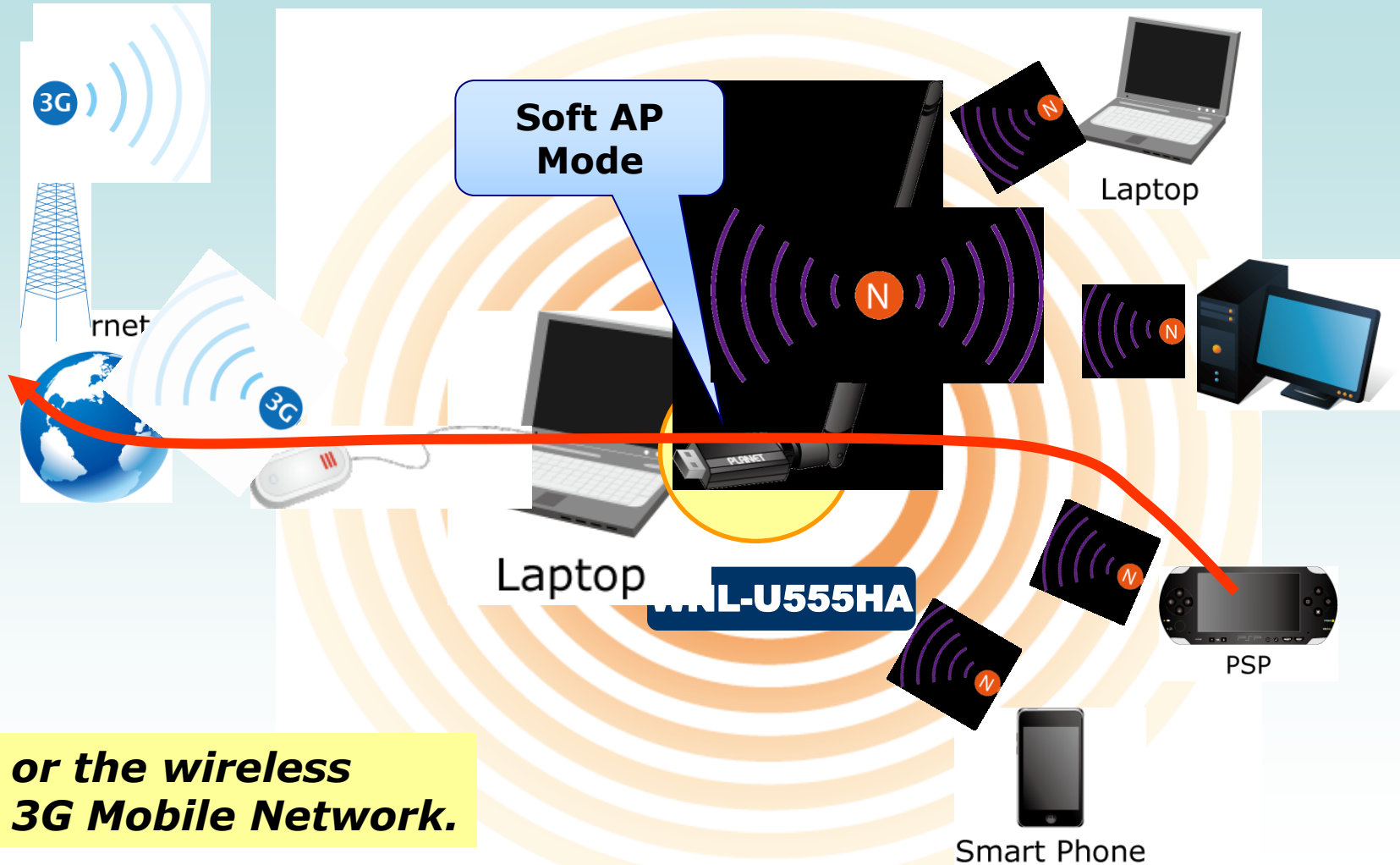
# Product Feature – Soft AP Mode

- ◆ Share Your Internet Connection with other Wi-Fi Devices



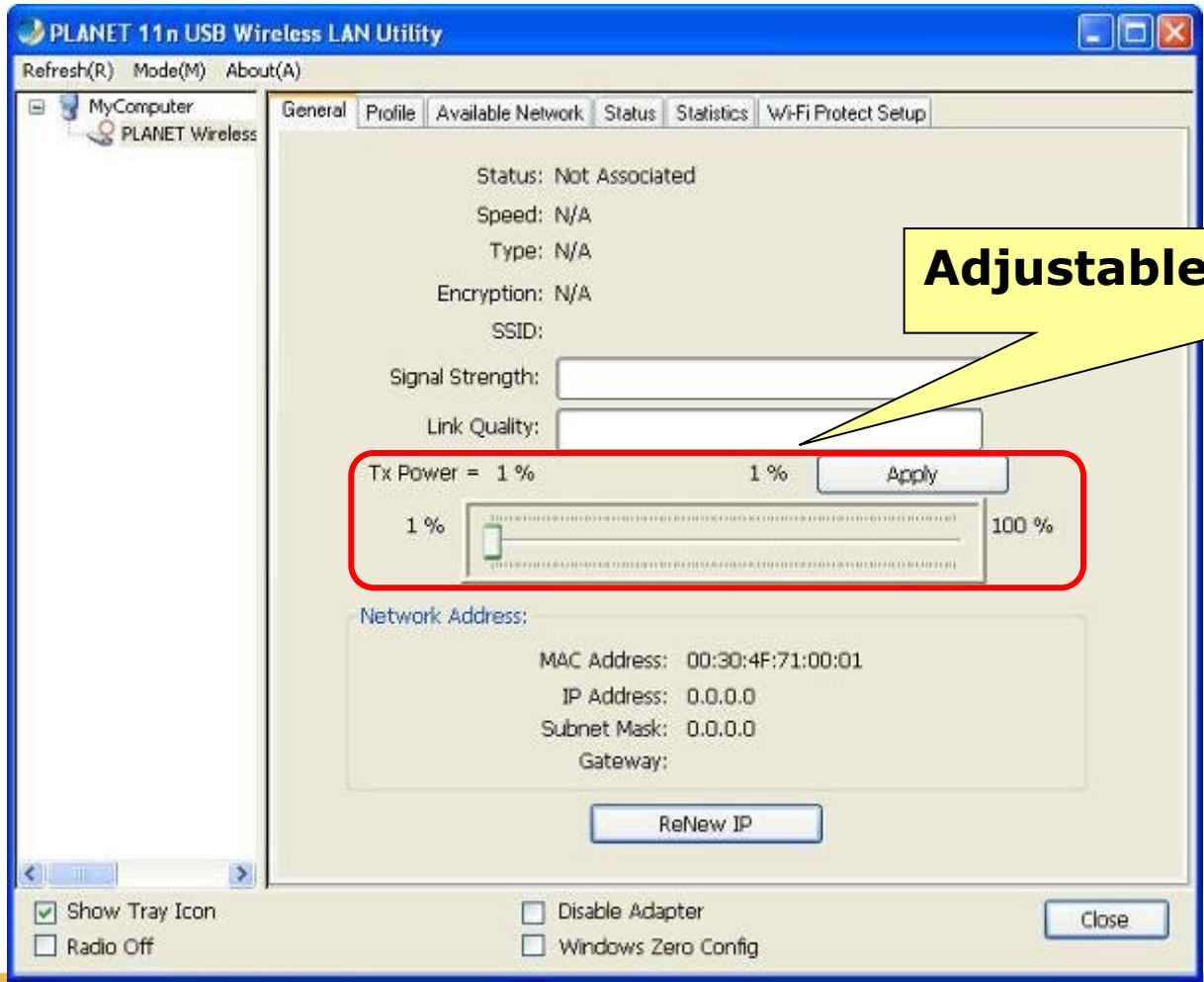
# Product Feature – Soft AP Mode

- ◆ Share Your Internet Connection with other Wi-Fi Devices



# Operation Interface Utility Screenshot

- ◆ The General Information of the wireless connection

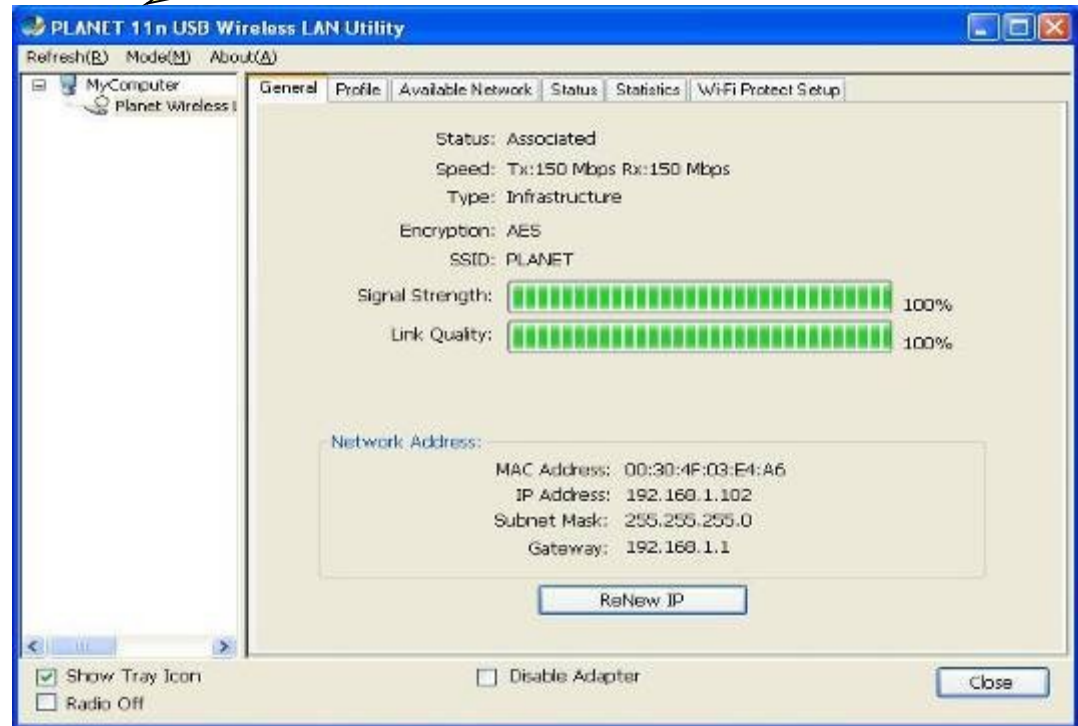


# Operation Interface - WPS

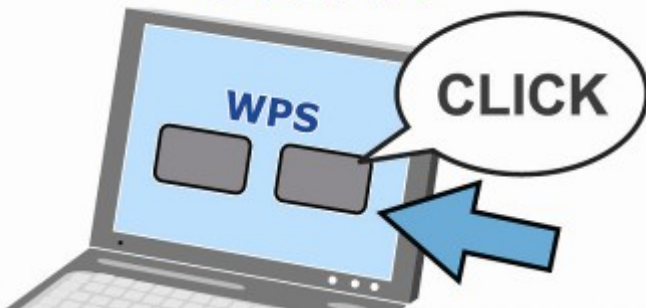
## ◆ Wi-Fi Protected Setup (WPS)



**Step 3:** The wireless adapter and the AP will negotiate with each other



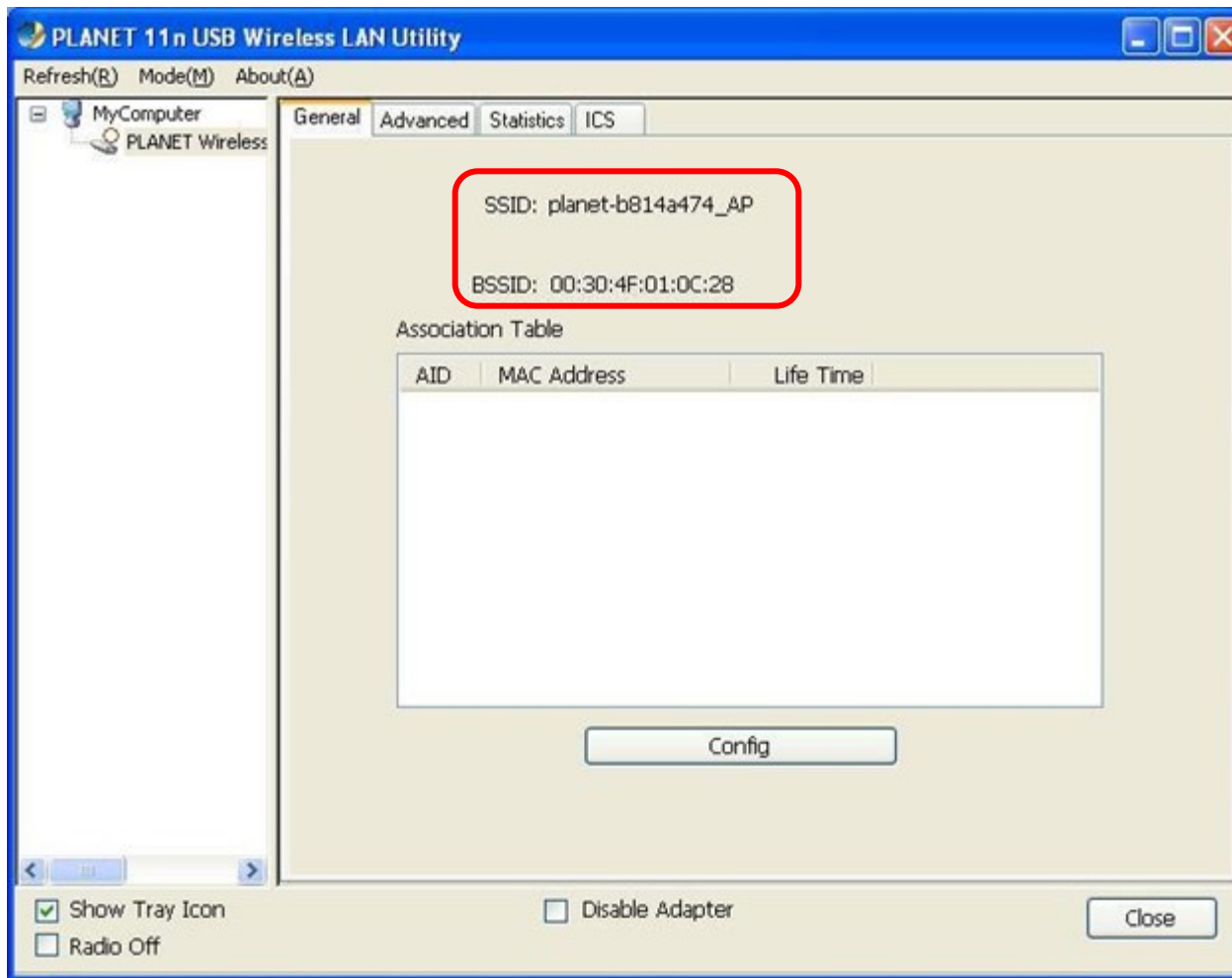
**STEP.1**



# Operation Interface

## Software AP

- ◆ Switch to Access Point mode



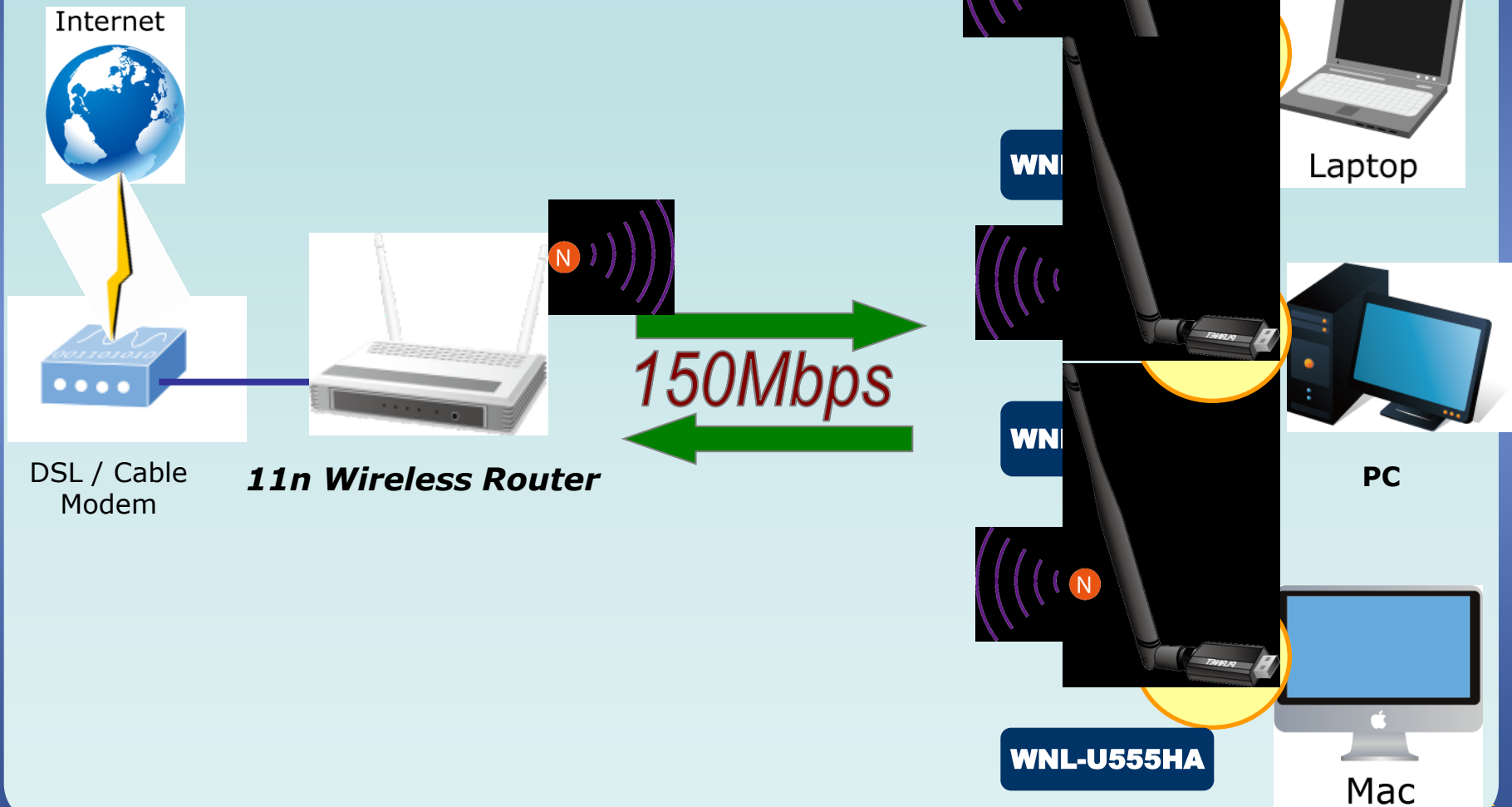
# Product Application

## ◆ Easy to Use and Safety Connection

- ✓ Connect the WNL-U555HA to your PC or notebook, you can easily share a **secure wireless network** for high-speed Internet access, file transmission or media stream in your home or office.
- ✓ Moreover, the WNL-U555HA enhances the safety connection by multiple advanced security features.




## Product Application Wireless Client (Station Mode)

- ◆ Connect to the AP to surf the Internet wire



# Product Comparison

## Internal - Wireless USB Series

Model	WNL-U554v3	WNL-U554v5	WNL-U554M
Outlook			
chipset	<b>Realtek RTL8188SU</b>	<b>Realtek RTL8188CUS</b>	
Standard	IEEE 802.11b/g/n		
Max. Output Power	<b>25dBm (320mW) adjustable</b>	<b>18dBm (63mW) non-adjustable</b>	
Transmitting Rate	150Mbps		
Operating Mode	Ad-hoc / Infrastructure, Access Point		
Wireless Security	WEP 64/128-bit, WPA/WPA2 WPA-PSK/WPA2-PSK with TKIP/AES encryption		
Antenna	<b>1 x Detachable 5dBi Antenna</b>	<b>1 x Detachable 3dBi Antenna</b>	<b>Fixed Internal Antenna</b>
Operating Systems	Windows 2000/XP (x86/x64) / VISTA (x86/x64) / Win7 (x86/x64) Linux Kernel 2.6, Macintosh Mac OS X 10.4/10.5/10.6		

# Product Comparison

## External



Model	Planet WUA-0624	EnGenius / EUB9603 EXT	LevelOne / WUA-0624
Outlook			
chipset	Realtek RTL8188SU		
Standard	IEEE 802.11b/g/n		
Max. Output Power	<b>25dBm (320mW) adjustable</b>	<b>22dBm (160mW) non-adjustable</b>	<b>16dBm (40mW) non-adjustable</b>
Transmitting Rate	150Mbps		
Operating Mode	<b>Ad-hoc / Infrastructure, Access Point</b>		<b>Ad-hoc / Infrastructure</b>
Wireless Security	WEP 64/128-bit, WPA/WPA2 WPA-PSK/WPA2-PSK with TKIP/AES encryption		
Antenna	<b>1 x Detachable 5dBi Antenna</b>	<b>1 x Detachable 2dBi Antenna</b>	<b>1 x Detachable 4dBi Antenna</b>
Dimension (L x W x H)	55 x 23.6 x 10mm	83 x 30 x 11mm	48 x 26 x 10mm
Weight (g)	<b>40g (Antenna included)</b>	<b>136g</b>	

# Appendix

## ◆ Accessories

- ✓ **ANT-OM5** 5dBi Omini-directional Antenna (RP-SMA Type)
- ✓ **ANT-OM8** 8dBi Omini-directional Antenna (N-Type)
- ✓ **ANT-OM15** 15dBi Omini-directional Antenna (N-Type)

## ◆ Related Products

- ✓ **WNRT-617** 150Mbps 802.11n Wireless Broadband Router
- ✓ **WNRT-627** 300Mbps 802.11n Wireless Broadband Router
- ✓ **WNRT-617G** 150Mbps 802.11n Wireless **3G** Router



WNRT-617



WNRT-627



WNRT-617G



# ACTIVATING IP POWER