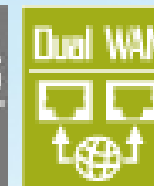


# 802.11n Dual WAN VPN Router

## VRT-420N



[www.planet.com.tw](http://www.planet.com.tw)

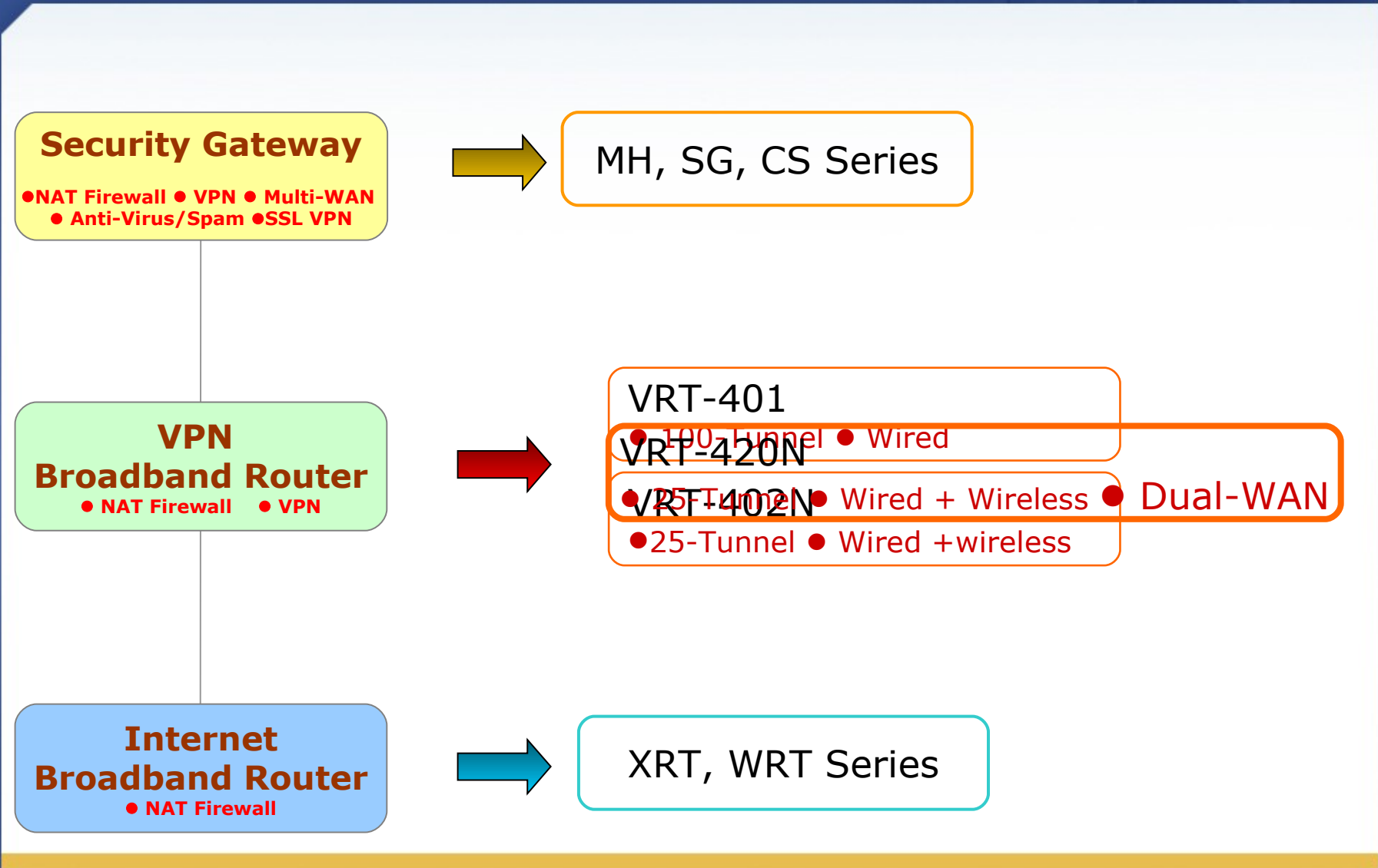
Copyright © PLANET Technology Corporation. All rights reserved.

# Presentation Outline

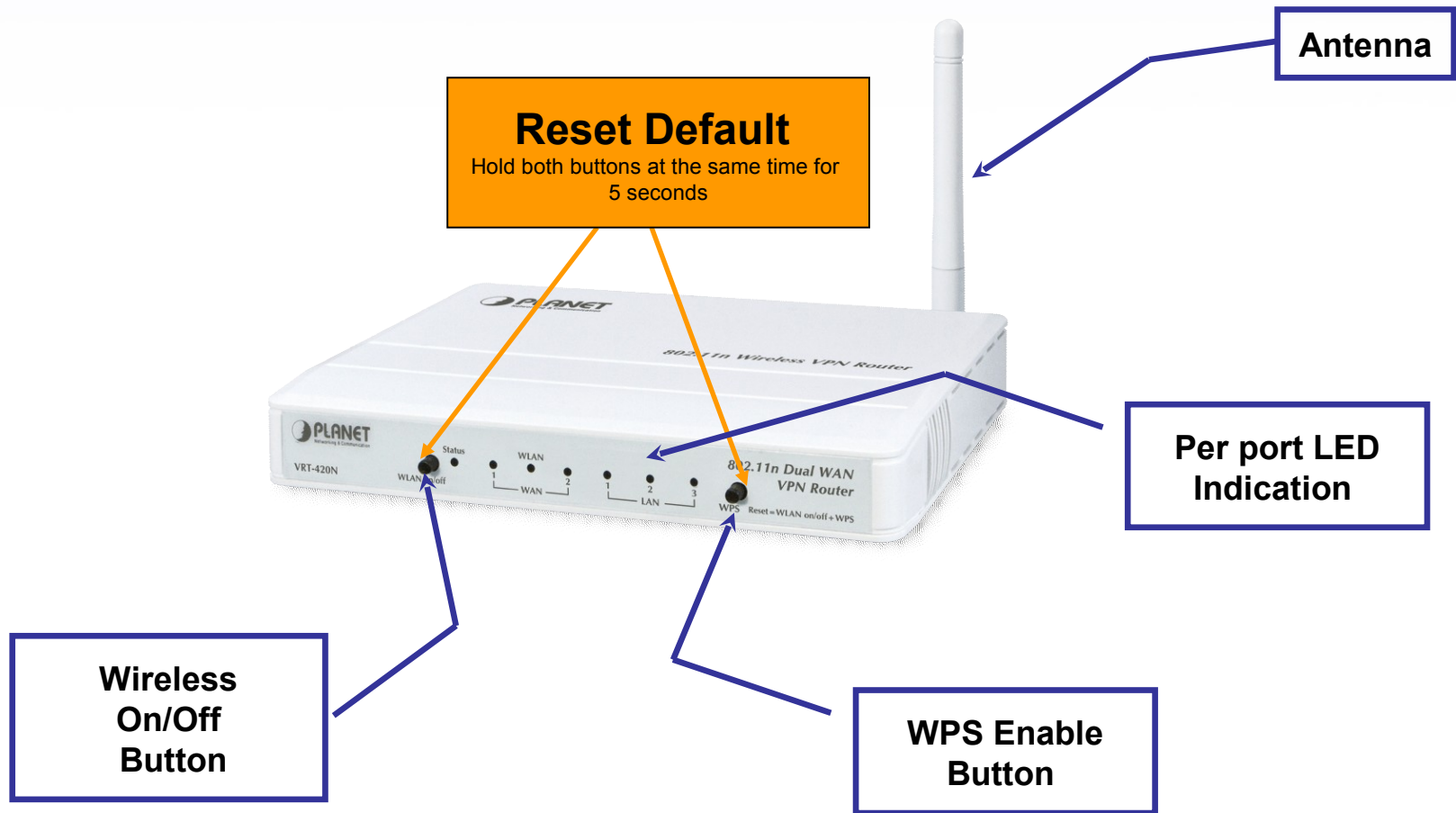
- ◆ **Product Overview**
- ◆ **Product Features**
- ◆ **Product Application**
- ◆ **Management**
- ◆ **Product Comparison**



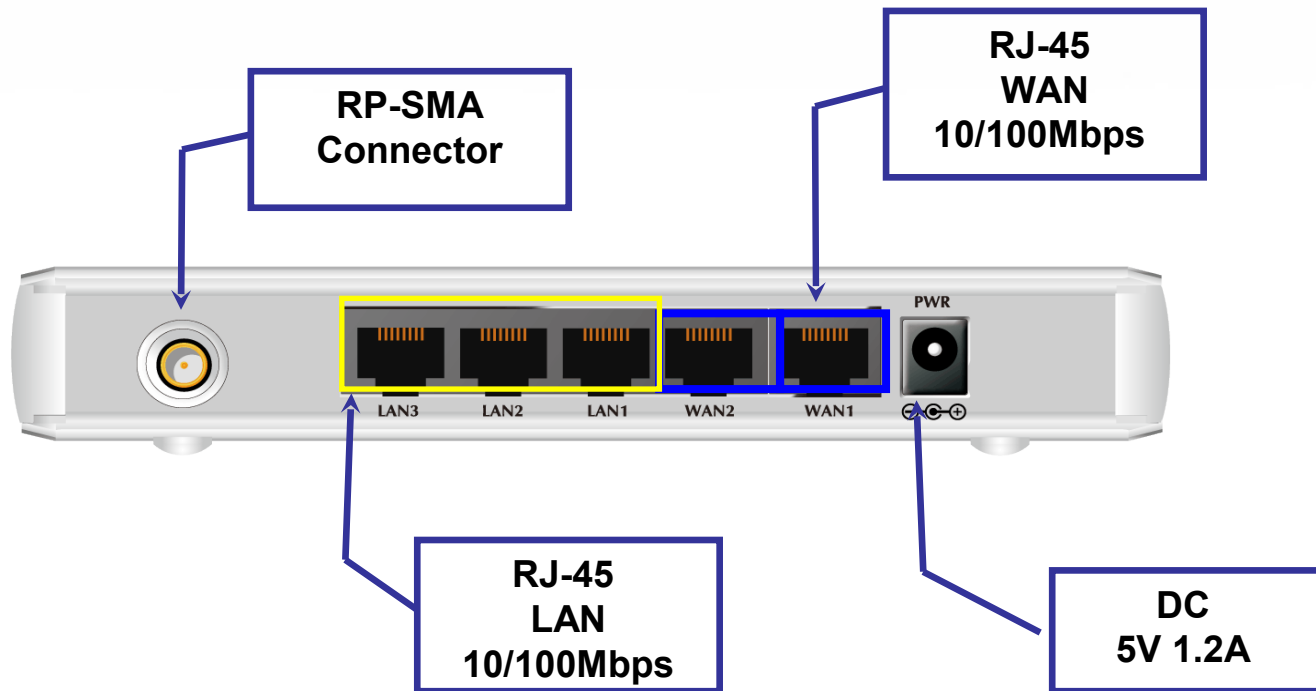
# Product Position



## ◆ Front View of VRT-420N



## ◆ Rear View of VRT-420N



## ◆ Hardware –

- 3 LAN / 2 WAN – 10/100Mbps, Auto-negotiation, Auto-MDI
- 802.11n 1T1R Technology
- WLAN Off push button
- WPS push button
- Detachable RP-SMA Antenna Connector

## ◆ VPN –

- **Up to 25 VPN tunnels support**
- **Authentication: MD5 / SHA-1**
- **Encryption: DES / 3DES & AES**
- **Max. 25 IPSEC VPN tunnels**
  - ✓ Net-to-Net or node connection
  - ✓ DH1 DH2, or DH5 for PFS
- **Max. 10 PPTP VPN tunnels**
  - ✓ CHAP
  - ✓ MSCHAP / MSCHAPv2
  - ✓ MPPE128 (Microsoft Peer to Peer Encryption)

## ◆ **Wireless –**

- **Up to 150Mbps 802.11n 1T1R**
- **WPS (WiFi Protected Setup) support – PBC (Push-Button) & PIN**
- **WDS (Repeater/ Bridge) support**
- **Multiple Operating Modes**
  - ✓ AP, AP Bridge, Repeater, Universal Repeater, AP-client (WISP, Wifi WAN)
- **WEP, WPA, WPA2, 802.1x Wireless Security**
- **Multiple SSID & Hidden SSID support**
- **RP-SMA for detachable Antenna installation**
- **Hardware WLAN OFF support**

## ◆ Router / Firewall –

- Native NAT Firewall
- MAC, IP Filter for Access Control
- URL Blocking
- SPI firewall / DoS prevention & protection
- VPN Pass-Through
- QoS, Static Bandwidth Management (SBM)
- DMZ, Virtual server

## ◆ Management –

- Load Balance/ Failover
- Friendly Web User Management Interface
- DHCP Server
- System status monitoring includes Active DHCP Client, Security Log and Device/Connection Status
- Remote Management allows configuration and upgrades from a remote site
- Supported Internet types: Dynamic / Static IP / PPPoE / PPTP / L2TP
- Support UPnP

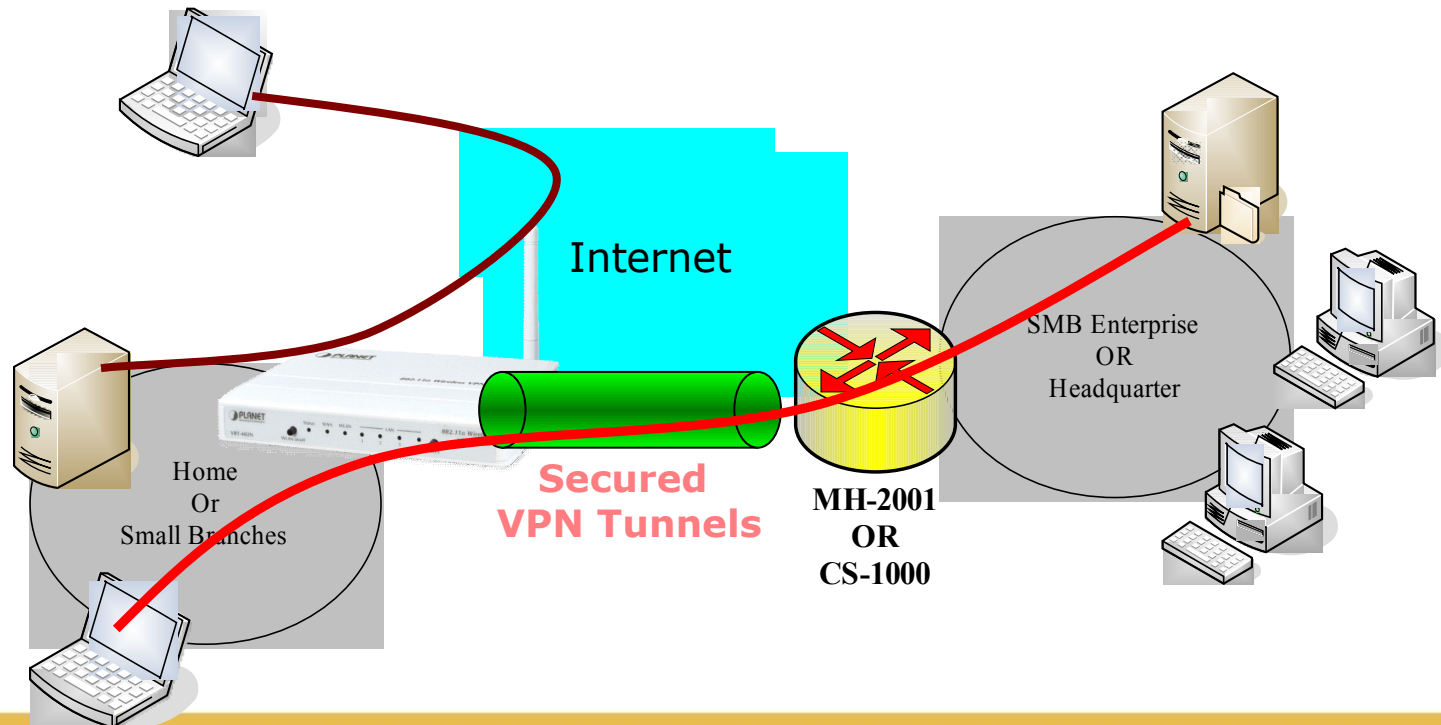
# Product Application

## ◆ Typical Application



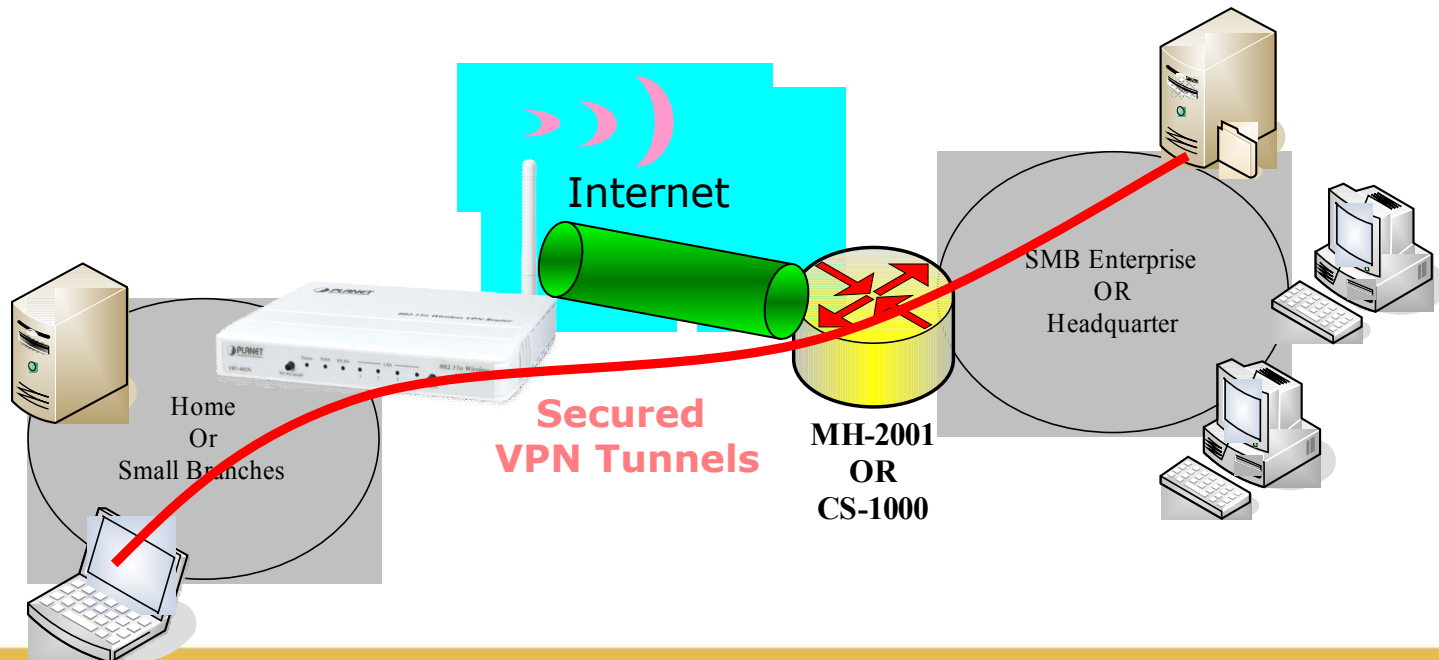
## ◆ Home/Branch VPN connections

- Home or Branches works can easily build a secured IPSEC connection to the Office
- The wireless interface brings the mobility for mobile works
- Mobile works can build a PPTP tunnel to the home or branches



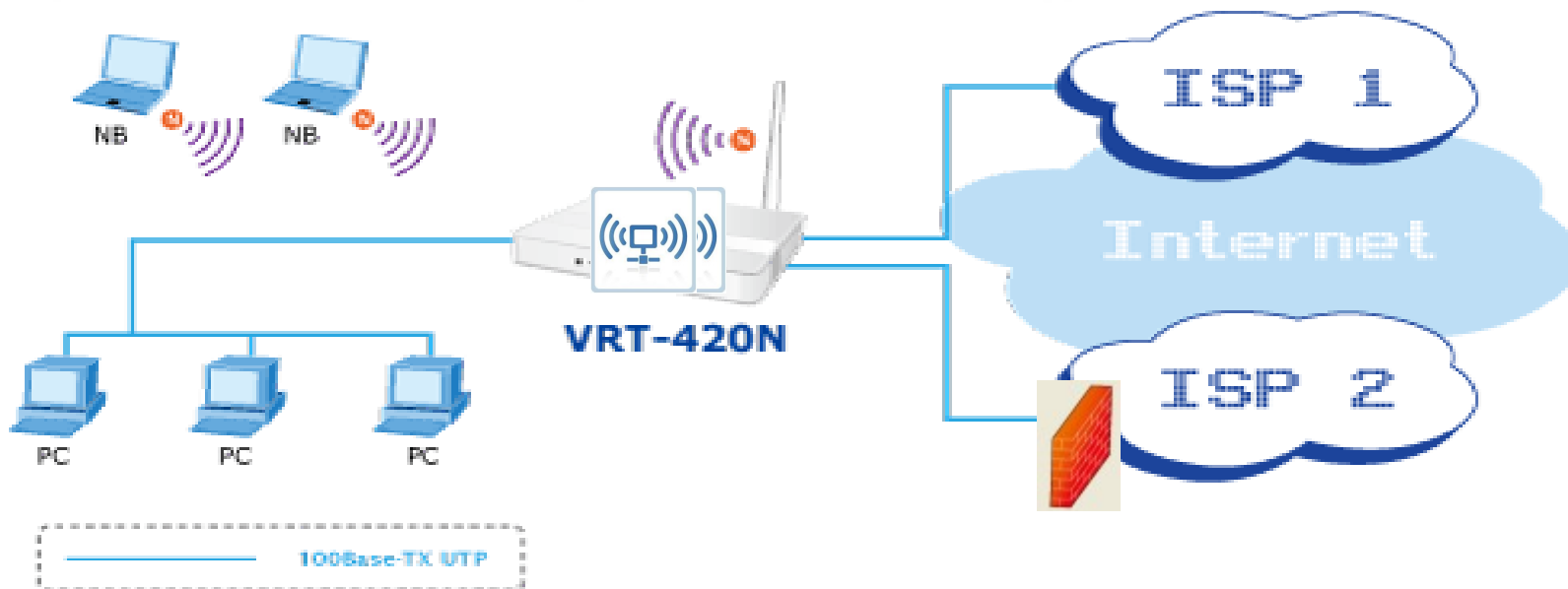
## ◆ WISP connections

- The WIFI WAN support also turns VRT-420N be the Wireless VPN Router for WISP connections



## ◆ Load Balance/Failover

- VRT-420N Dual WAN feature, can make connection smooth and high performance.



# Product Management

The screenshot displays the 'Setu' (Setup) interface for WLAN configuration. It features four stacked sections for WLAN 1 - SSID 1 through SSID 4. Each section includes fields for 'Wireless SSID Name', 'Wireless SSID Broadcasting', 'Wi-Fi Multimedia (WMM)', 'Wireless Isolation', and 'Security Mode'. Radio buttons allow for 'Enable' or 'Disable' settings. A 'Login' panel on the left contains fields for 'User Name', 'Password', and 'Language'. A 'Load Balance & Backup' panel on the right is partially visible.

| SSID            | Wireless SSID   | Wireless SSID Name | Wireless SSID Broadcasting  | Wi-Fi Multimedia (WMM)  | Wireless Isolation  | Security Mode |
|-----------------|---|--------------------|---|---|---|---------------|
| WLAN 1 - SSID 1 | <input checked="" type="radio"/> Enable <input type="radio"/> Disable | default            | <input checked="" type="radio"/> Enable <input type="radio"/> Disable | <input checked="" type="radio"/> Enable <input type="radio"/> Disable | <input type="radio"/> Enable <input checked="" type="radio"/> Disable | Disable       |
| WLAN 1 - SSID 2 | <input type="radio"/> Enable <input checked="" type="radio"/> Disable | PLANET1            | <input checked="" type="radio"/> Enable <input type="radio"/> Disable | <input checked="" type="radio"/> Enable <input type="radio"/> Disable | <input type="radio"/> Enable <input checked="" type="radio"/> Disable | Disable       |
| WLAN 1 - SSID 3 | <input type="radio"/> Enable <input checked="" type="radio"/> Disable | PLANET2            | <input checked="" type="radio"/> Enable <input type="radio"/> Disable | <input checked="" type="radio"/> Enable <input type="radio"/> Disable | <input type="radio"/> Enable <input checked="" type="radio"/> Disable | Disable       |
| WLAN 1 - SSID 4 | <input type="radio"/> Enable <input checked="" type="radio"/> Disable | PLANET3            | <input checked="" type="radio"/> Enable <input type="radio"/> Disable | <input checked="" type="radio"/> Enable <input type="radio"/> Disable | <input type="radio"/> Enable <input checked="" type="radio"/> Disable | Disable       |

Load Balance  
& Backup  
N

Multi-SSID: 4

Lo

# Product Management

## IPSEC Setup Page




|                                    |  |
|------------------------------------|--|
| Sequence Number                    | <input type="text" value="2"/>                           |
| Connection Name                    | <input type="text" value="CS-series"/>                   |
| Rule Enable                        | <input checked="" type="checkbox"/>                      |
| VPN Mode                           | Net-to-Net <input type="button" value="v"/>              |
| Local External Interface           | Ethernet WAN <input type="button" value="v"/>            |
| Local Internal IP Address          | <input type="text" value="192.168.0.1"/>                 |
| Local Netmask                      | <input type="text" value="255.255.255.0"/>               |
| Remote Gateway                     | <input type="text" value="heaventea.dyndns-free."/>      |
| Remote Subnet IP                   | <input type="text" value="192.168.2.1"/>                 |
| Remote Netmask                     | <input type="text" value="255.255.255.0"/>               |
| Connection Initiation              | <input checked="" type="checkbox"/>                      |
| IKE Key Mode                       | PSK <input type="button" value="v"/>                     |
| Preshared Key                      | <input type="text" value="12345678"/>                    |
| DPD Enable                         | <input type="checkbox"/>                                 |
| Advanced Options                   | <input checked="" type="checkbox"/>                      |
| Phase 1 Mode                       | Main <input type="button" value="v"/>                    |
| Phase 1 ID                         | <input type="text"/>                                     |
| Phase 1 Lifetime                   | <input type="text" value="3600"/> Seconds(1200 ~ 86400)  |
| Phase 2 Lifetime                   | <input type="text" value="28800"/> Seconds(1200 ~ 86400) |
| Phase 1 Authentication             | MD5 <input type="button" value="v"/>                     |
| Phase 1 Encryption                 | 3DES <input type="button" value="v"/>                    |
| Phase 1 Group Key Management       | DH2 <input type="button" value="v"/>                     |
| Phase 2 Authentication             | MD5 <input type="button" value="v"/>                     |
| Phase 2 Encryption                 | 3DES <input type="button" value="v"/>                    |
| Phase 2 Group Key Management (PFS) | DH2 <input type="button" value="v"/>                     |

Max 2!  
IPSEC

# Product Comparison

| Model                   | VRT-420N   | VRT-402N  |
|-------------------------|--|---|
| Features                |  |  |
| Wireless                | 11n 1T1R   | 11n 1T1R  |
| WPS                     | Yes  | Yes   |
| VPN IPsec Tunnel        | 25   | 25  |
| VPN pass through        | IPsec, PPTP ,L2TP  | IPsec, PPTP ,L2TP   |
| VPN Authentication      | MD5/SHA-1  | MD5/SHA-1   |
| VPN Encryption          | DES/3DES/ AES  | DES/3DES/ AES   |
| Firewall/Access Control | Yes  | Yes   |
| QoS                     | Yes  | Yes   |
| DDNS                    | Yes  | Yes   |
| DMZ                     | Yes  | Yes   |
| Dual WAN                | Yes  | No  |

# Product Comparison

| Model                   | Planet /VRT-420N  | Hawking /H2WR54G   | DrayTek / Vigor2920N  |
|-------------------------|---|--|---|
| Features                |  |  |  |
| Wireless                | <b>11n1T1R</b>  | <b>11G 1T1R</b>  | <b>11G 3T3R</b>   |
| WPS                     | <b>Yes</b>  | <b>No</b>  | <b>No</b>   |
| VPN IPsec Tunnel        | <b>25</b>   | <b>NA</b>  | <b>10</b>   |
| VPN pass through        | <b>IPSec, PPTP , L2TP</b>   | <b>IPSec,PPTP,L2TP</b>   | <b>IPSec,PPTP,L2TP</b>  |
| VPN Authentication      | <b>MD5/SHA-1</b>  | <b>NA</b>  | <b>MD5/SHA-1</b>  |
| VPN Encryption          | <b>DES/3DES/ AES</b>  | <b>NA</b>  | <b>DES/3DES/AES</b>   |
| Firewall/Access Control | <b>Yes</b>  | <b>Yes</b>   | <b>Yes</b>  |
| QoS                     | <b>Yes</b>  | <b>Yes</b>   | <b>Yes</b>  |
| Wireless Mode           | <b>AP, WISP, Bridge</b>   | <b>AP</b>  | <b>AP</b>   |
| Sessions                | <b>15000</b>  | <b>NA</b>  | <b>NA</b>   |

## ◆ Target Markets

- System Integrator
- Reseller

## ◆ Target Customers

- Who buy our VPN products
  - ✓ VRT-401v2 / VRT-311S/ VRT-402N
  - ✓ MH-2001 / CS-1000

- **Related Products:**

- PLANET 11n Product

- ✓ WNL-U554
- ✓ WNL-U554A
- ✓ WNL-9331

**WNL-U554**



**WNL-U554A**



**WNL-9331**





# ACTIVATING IP POWER