

19-inch Rack Mountable 32-Channel Network Video Recorder **NVR-3250**



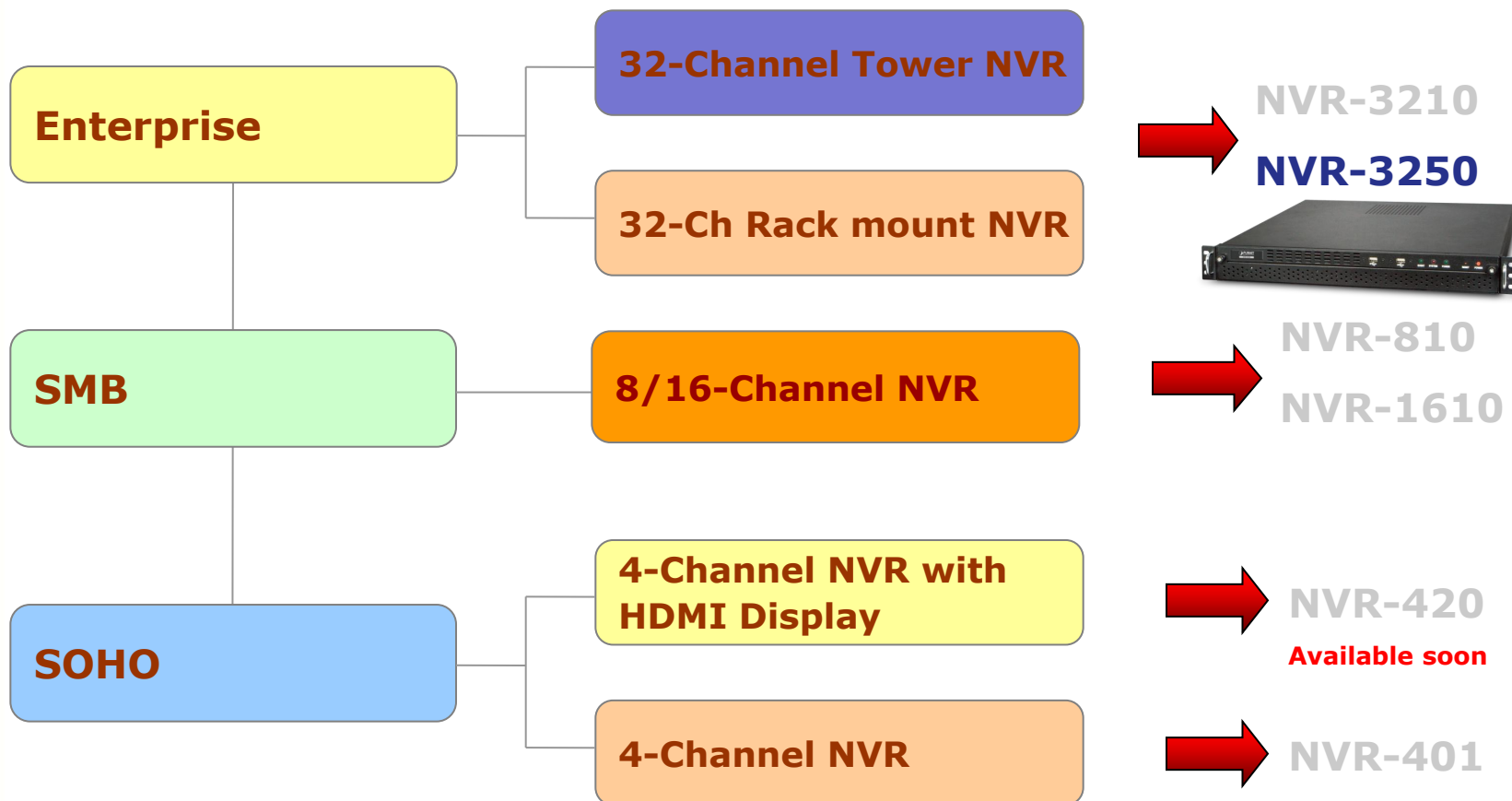
Presentation Outline

- ◆ **Product Overview**
- ◆ **Product Feature**
- ◆ **Management**
- ◆ **Product Comparison**



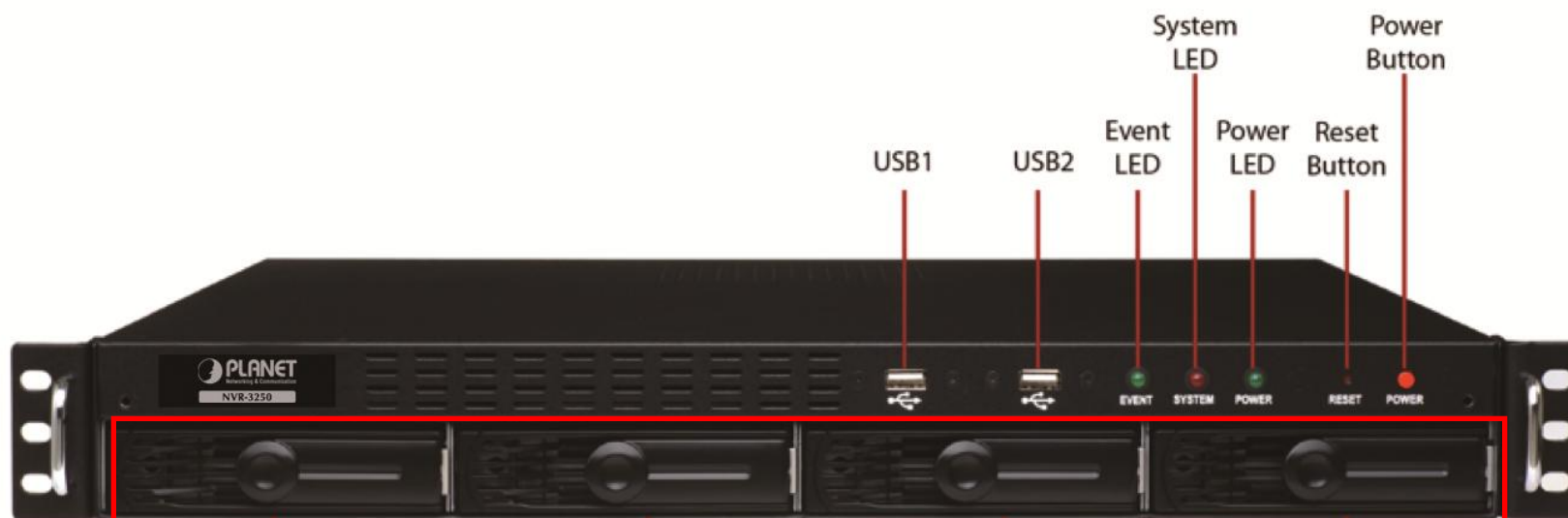
Product Overview

◆ PLANET NVR Product Classification



Overview

◆ Device Front Panel

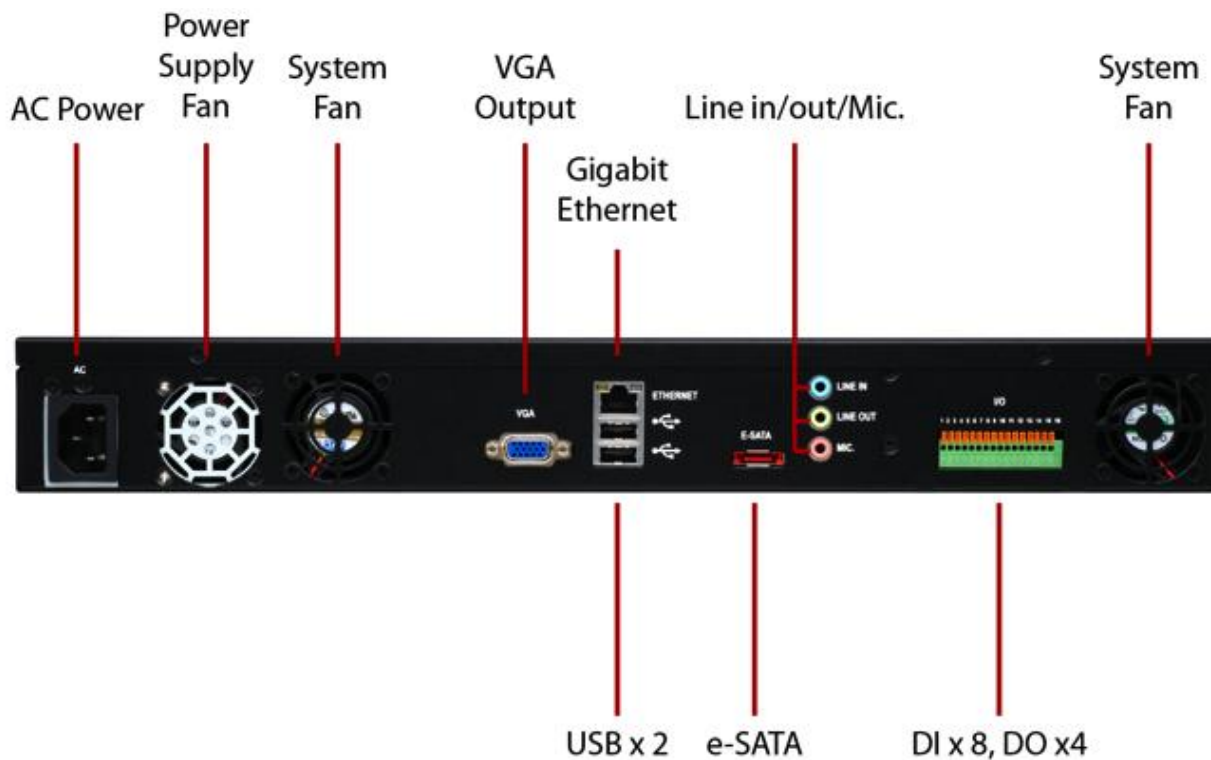


- ◆ The built-in RAID functions provide additional performance boost to the HDD read/write speed and/or higher tolerance to the data safety. In the event of HDD disks failure, the failed HDD within the RAID volume (except RAID 0) can be replaced without the loss of your precious data, and the recording will not stop even while the HDD is failed.

NOTE: The system is shipped without HDD.

Overview

◆ Device Rear Panel



Device Features

◆ 32-CH Network Video Recorder

- ✓ **Auto Configuration** for PLANET IP Camera
- ✓ Easy access with **PLANTE Dynamic DNS**
- ✓ **ONVIF** compliant for interoperability
- ✓ VGA local display up to 1080P
- ✓ Simultaneous **Recording** and **Live** Video Streams
- ✓ Supports **M-JPEG** / **MPEG-4** / **H.264** compressions
- ✓ Mobile Devices Remote Monitoring (**iNVR Viewer**)
- ✓ Video resolution up to 5 Mega-Pixel (2560 * 1920)
- ✓ Support up to **960fps** @ Mega-Pixel (H.264)
- ✓ Manual or Schedule Recording of 32 IP Cameras simultaneously

Management Features

◆ 32-CH Network Video Recorder

- ✓ **Video recycle** function makes the video recording in 7/24
- ✓ **Web-Based** and management utility for easy configuration
- ✓ **E-Map / Google Map** interface in web and utility configuration
- ✓ Smart IP camera search / Motion Detection support
- ✓ Exports record video file to **AVI** format
- ✓ **Multiple Monitor** / Advanced PTZ Control support
- ✓ **Multiple Languages** / **Multi-Brand** IP camera support
- ✓ Supports mobile phone remote view with WinCE 6.1, Android, Symbian S60, iPhone, Blackberry 4.6
- ✓ Up to 16 NVR, max. **256** channels with the center management software (CV3-M256)

* The full version of CMS software (CV3-M1024) can be purchased additionally to manage up to 1,024 channels by working with the NVR-3210

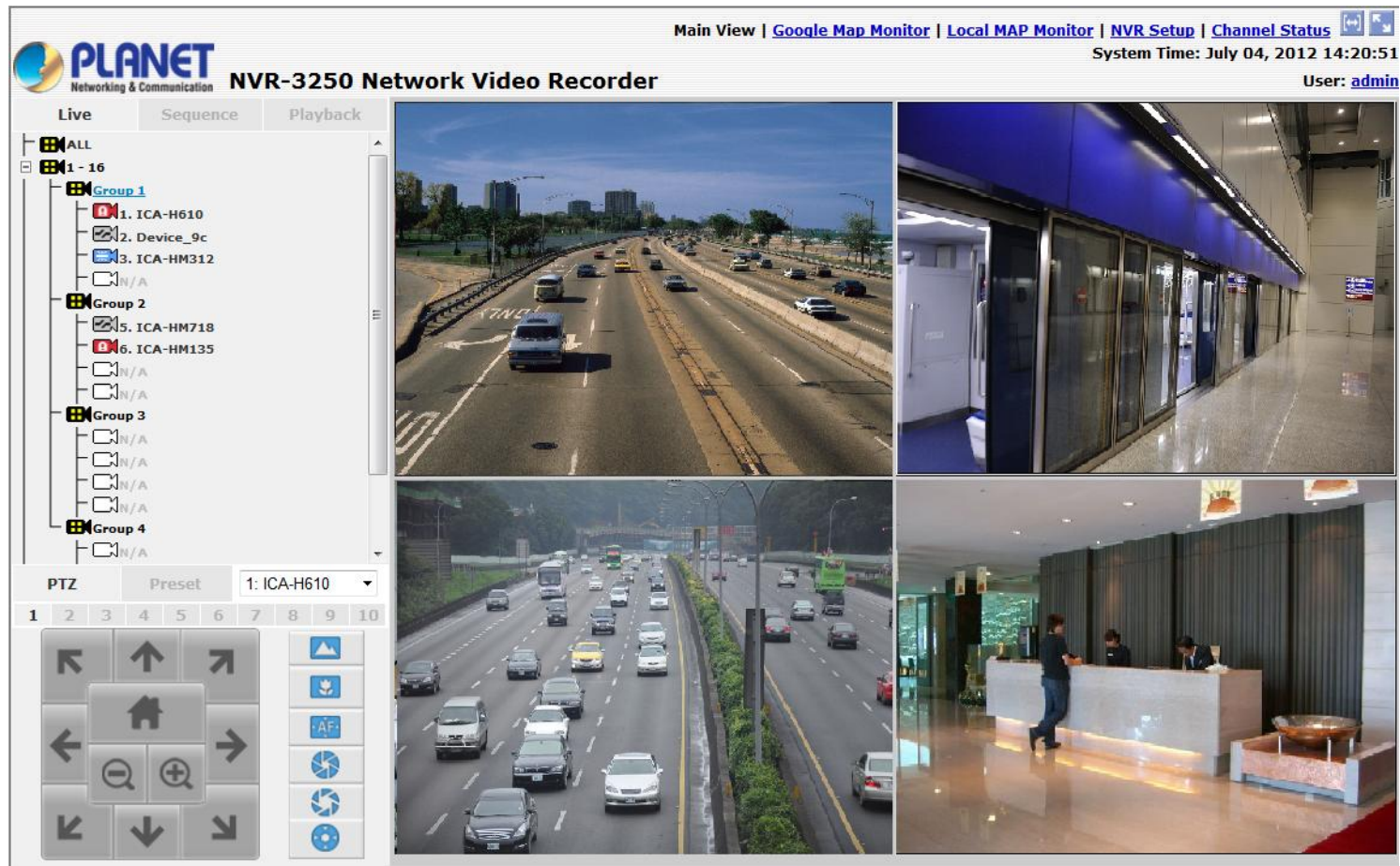
Hardware Features

◆ 32-CH Network Video Recorder

- ✓ Professional 19-inch Rack Mountable with easy to remove **HDD Tray** Design
- ✓ 4 x **SATA II** HDD bay (Max. 12TB)
- ✓ External e-SATA Interface for The Expansion of Video Recording
- ✓ **Gigabit** Ethernet port
- ✓ 4 x **External USB** Interface for Video Backup
- ✓ **Two-Way Audio** function (G.711, G.726)
- ✓ Built-in **8 x DI, 4 x DO** for Event Management
- ✓ **Auto power-on** and **recording** after power recovery

Web Management Interface

◆ Real-Time image of Main View



The screenshot displays the PLANET NVR-3250 Network Video Recorder web interface. The top navigation bar includes links for [Main View](#), [Google Map Monitor](#), [Local MAP Monitor](#), [NVR Setup](#), and [Channel Status](#). The system time is shown as July 04, 2012 14:20:51, and the user is identified as [admin](#).

The interface is divided into several sections:

- Live View:** A sidebar on the left shows a tree structure of camera groups. Group 1 contains cameras 1 (ICA-H610), 2 (Device_9c), and 3 (ICA-HM312). Group 2 contains cameras 5 (ICA-HM718) and 6 (ICA-HM135). Groups 3 and 4 are currently empty.
- PTZ Controls:** Below the device list, there are PTZ controls for the selected camera (1: ICA-H610), including a preset menu and a directional keypad.
- Video Feeds:** The main area displays four real-time video feeds. The top-left feed shows a wide highway with multiple lanes of traffic. The top-right feed shows a modern building interior with glass walls. The bottom-left feed shows a closer view of a highway with cars. The bottom-right feed shows a reception desk with staff members.

Web Management Interface

◆ Visual Event Alerts Through Google Emap



Web Management Interface

◆ Channel Status

Real-time web page IP Camera Status

Recording type – Schedule, Event, or Manually

Channel ID	1	2	3	4	5	6	7	8
Channel Status	Recording	Recording	Recording	Recording	Recording	Recording	Recording	Recording
Channel Name	ICA-HM350	ICA-HM350	ICA-HM350	ICA-HM350	ICA-HM350	ICA-HM350	ICA-HM350	ICA-H610
IP Address	192.168.0.35	192.168.0.36	192.168.0.230	192.168.0.61	192.168.0.31	192.168.0.167	192.168.0.104	192.168.0.91
HTTP Port	80	80	80	80	80	80	80	80
Continuous Recording								
Schedule Recording	Recording	Recording	Recording	Recording	Recording	Recording	Recording	Recording
Event Recording								
Manual Recording								
Stream Format	MPEG4	MPEG4			MPEG4	MPEG4	MPEG4	MPEG4
Resolution	VGA	VGA			VGA	VGA	VGA	4cif
Frame Rate	27 fps	14 fps			23 fps	23 fps	21 fps	30 fps
Bitrate	820 kbps	211 kbps	2393 kbps	1477 kbps	2795 kbps	3392 kbps	3144 kbps	6020 kbps

Real-time performance status for diagnostic

iOS APP Interface



◆ IP Surveillance

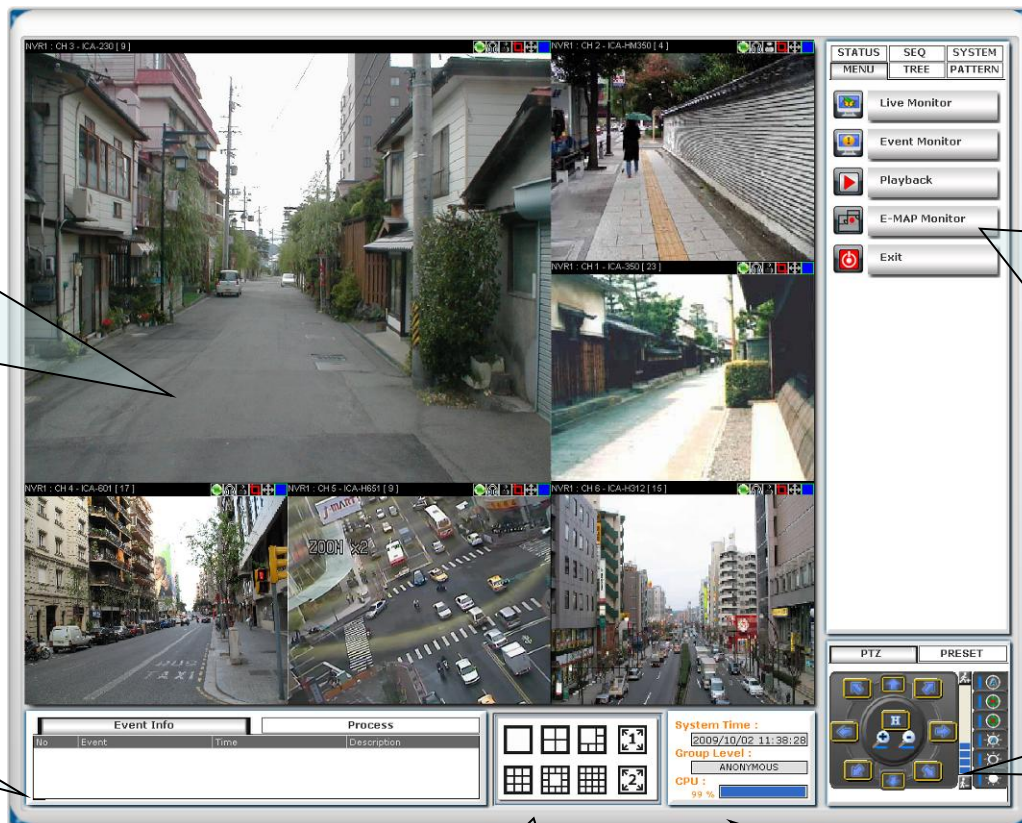
- ✓ Auto Search NVRs on the Network
- ✓ Support PTZ & Digital Zoom
- ✓ Support Snapshot
- ✓ Unlimited PLANET NVR (NVR-401/ 420/ 810/ 1610/ 3210 / **3250**) & CV3P Access

Management Software - CMS

◆ Windows-based CMS Main Screen (CV3-M256)

Main View
Up to **8** NVR,
256 channel
management

System Log



System Menu

- . Menu
- . Tree
- . Pattern
- . Status
- . Sequence
- . System

PTZ Control

View Division

System Information

Multiple Monitor Display - CMS

Configurable monitors in different operation simultaneously.



- **Provide a various display feasibility**
- **Perform different tasks at the same time**

Monitor A



Main View

Monitor B



Event View



Playback



E-Map

Playback

Supports 4 channel playback simultaneously.

Playback View

Playing Time

Recorded Event
Thumbnails

NVR list

Channel list

Date

Time

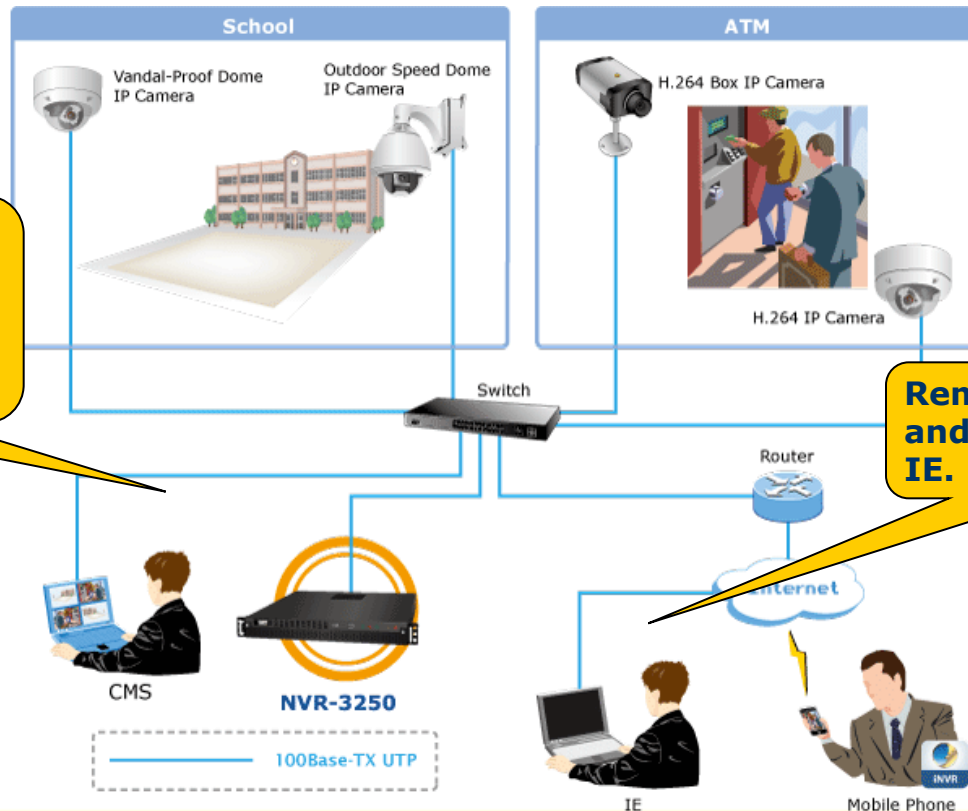
Playback
controller

Playback
Slider

Applications

- ◆ The NVR-3250 can be controlled and monitored both in the local LAN and the remote site via Internet. For example, it helps to enhance the security of the bank ATM and school environment through remote monitoring and management. Users can also login from their mobile phones to check the monitoring screen when there is no PC available.

Save recorded video file from several IP cameras without PC. Distributed System with reliability.

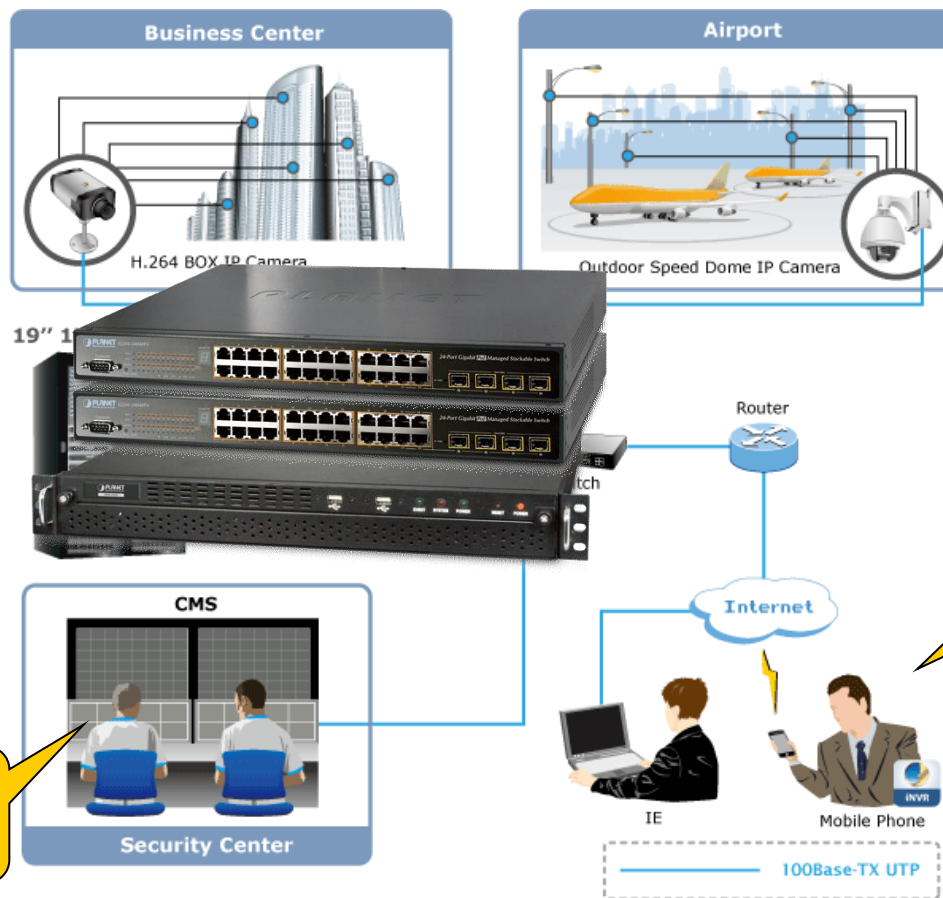


Remote live view and playback on IE.

Applications

- ◆ The NVR-3250 enables the administrators to simultaneously monitor the multisite surveillance up to 1024 channels* via its bundled CMS software, multi-monitor and E-Map functions.

NVR-3250
SGSW-24040P
SGSW-24040P



Central manage up to 32 NVR with bundle utility.

Allowed users remote access via mobile phone.

Comparison Table



Model Name	PLANT NVR-3250	Samsung SRN-3250
Video Channels	32	32
Compression Format	H.264/ MPEG4 / M-JPEG	H.264/ MPEG4 / M-JPEG
Resolution	Max. 5MP (2560 x 1920)	Ma. 1.3 MP (1280 x 1024)
Storage Device	4	4
RAID	RAID 0 / 1 / 5 / 10	RAID 0 / 1
E-SATA	V	V
VGA	V	V
CMS	V	V
NVR App	V	-
E-Map	V	-
HDD Tray	V	-
2-Way Audio	V	-
Multiple Languages	V	-
ONVIF / PLANET DDNS	V	-

Appendix Sales Target

◆ Target Markets

- ✓ **CCTV System**
- ✓ **SMB / Enterprise**
- ✓ **System Integrator**

◆ Target Customers

- ✓ **Who buy our NVR**
 - NVR-810 / NVR -1610 / NVR-3210
- ✓ **Who buy our CV3P & CMS**
 - CV3P-4/8/16/36/64
 - CV3-M1024
- ✓ **Who buys IP cameras**
- ✓ **And Who buy 19" POE Switches**
 - SGSW-24040P / WGSW-28040P

◆ Compatible Item

- ✓ ICA-107/107W
- ✓ ICA-HM100/HM100W
- ✓ ICA-HM101/HM101W
- ✓ ICA-HM126/HM127
- ✓ ICA-HM131/HM132/HM136
- ✓ ICA-HM220W/HM312
- ✓ ICA-HM316/HM316W
- ✓ ICA-HM317/HM351
- ✓ ICA-H612/H652/HM620
- ✓ ICA-HM830/HM830W/HM835
- ✓ IVS-H120
- ✓ ICA-2500/3350V/5350V

*More to be supported via firmware upgrade



ACTIVATING IP POWER