



802.11n Wireless USB Adapter

WNL-U554A

User's Manual

Version: 1.00

Date: November 2008

Copyright

Copyright © 2008 by PLANET Technology Corp. All rights reserved. No part of this publication may be reproduced, transmitted, transcribed, stored in a retrieval system, or translated into any language or computer language, in any form or by any means, electronic, mechanical, magnetic, optical, chemical, manual or otherwise, without the prior written permission of PLANET.

PLANET makes no representations or warranties, either expressed or implied, with respect to the contents hereof and specifically disclaims any warranties, merchantability or fitness for any particular purpose. Any software described in this manual is sold or licensed "as is". Should the programs prove defective following their purchase, the buyer (and not PLANET, its distributor, or its dealer) assumes the entire cost of all necessary servicing, repair, and any incidental or consequential damages resulting from any defect in the software. Further, PLANET reserves the right to revise this publication and to make changes from time to time in the contents hereof without obligation to notify any person of such revision or changes.

All brand and product names mentioned in this manual are trademarks and/or registered trademarks of their respective holders.

Federal Communication Commission Interference Statement

This equipment has been tested and found to comply with the limits for a Class B digital device, pursuant to Part 15 of FCC Rules. These limits are designed to provide reasonable protection against harmful interference in a residential installation. This equipment generates, uses, and can radiate radio frequency energy and, if not installed and used in accordance with the instructions, may cause harmful interference to radio communications. However, there is no guarantee that interference will not occur in a particular installation. If this equipment does cause harmful interference to radio or television reception, which can be determined by turning the equipment off and on, the user is encouraged to try to correct the interference by one or more of the following measures:

1. Reorient or relocate the receiving antenna.
2. Increase the separation between the equipment and receiver.
3. Connect the equipment into an outlet on a circuit different from that to which the receiver is connected.
4. Consult the dealer or an experienced radio technician for help.

FCC Caution

To assure continued compliance. (Example - use only shielded interface cables when connecting to computer or peripheral devices). Any changes or modifications not expressly approved by the party responsible for compliance could void the user's authority to operate the equipment.

This device complies with Part 15 of the FCC Rules. Operation is subject to the Following two conditions: (1) This device may not cause harmful interference, and (2) this Device must accept any interference received, including interference that may cause undesired operation.

Federal Communication Commission (FCC) Radiation Exposure Statement

This equipment complies with FCC radiation exposure set forth for an uncontrolled environment. In order to avoid the possibility of exceeding the FCC radio frequency exposure limits, human proximity to the antenna shall not be less than 20 cm (8 inches) during normal operation.

R&TTE Compliance Statement

This equipment complies with all the requirements of DIRECTIVE 1999/5/CE OF THE EUROPEAN PARLIAMENT AND THE COUNCIL OF 9 March 1999 on radio equipment and telecommunication terminal Equipment and the mutual recognition of their conformity (R&TTE). The R&TTE Directive repeals and replaces in the directive 98/13/EEC (Telecommunications Terminal Equipment and Satellite Earth Station Equipment) As of April 8,2000.

Safety

This equipment is designed with the utmost care for the safety of those who install and use it. However, special attention must be paid to the dangers of electric shock and static electricity when working with electrical equipment. All guidelines of this and of the computer manufacture must therefore be allowed at all times to ensure the safe use of the equipment.

EU Countries Intended for Use

The ETSI version of this device is intended for home and office use in Austria Belgium, Denmark, Finland, and France (with Frequency channel restrictions). Germany, Greece, Ireland, Italy, Luxembourg .The Netherlands, Portugal, Spain, Sweden and United Kingdom. The ETSI version of this device is also authorized for use in EFTA member states Iceland, Liechtenstein, Norway and Switzerland.

WEEE regulation



To avoid the potential effects on the environment and human health as a result of the presence of hazardous substances in electrical and electronic equipment, end users of electrical and electronic equipment should understand the meaning of the crossed-out wheeled bin symbol. Do not dispose of WEEE as unsorted municipal waste and have to collect such WEEE separately.

Revision

User's Manual for PLANET 802.11n Wireless USB Adapter

Model: WNL-U554A

Rev: 1.0 (November 2008)

Part No. EM-WNLU554A

Table of Contents

CHAPTER 1: INTRODUCTION	7
1-1 FEATURES	7
1-2 SAFETY INFORMATION.....	8
1-3 SPECIFICATION.....	9
1-4 PACKAGE CONTENTS.....	10
1-5 HARDWARE INFO.....	11
CHAPTER 2: INSTALLATION	12
CHAPTER 3: GENERAL CONFIGURATION	17
3-1 PROFILE MANAGEMENT	18
3-1-1 <i>System Configuration</i>	19
3-1-2 <i>Authority/Encryption setting</i>	21
3-1-3 <i>Using 802.11x</i>	23
3-2 NETWORK-CONFIGURATION UTILITY	26
3-2-1 <i>Using configuration Utility</i>	26
3-2-2 <i>Connect to an Access Point</i>	28
3-3 ADVANCED SETTINGS	32
3-4 VIEW NETWORK LINK STATISTICS	34
3-5 WMM SETTING	35
3-6 WPS CONFIGURATION.....	36
3-6-1 <i>WPS Setup - PBC (Push-Button Configuration)</i>	36
3-6-2 <i>WPS Setup - PIN</i>	38
3-7 RADIO ON/OFF	41
3-8 ABOUT	42
3-9 HELP.....	43
CHAPTER 4: SOFT-AP FUNCTION.....	44
4-1 SWITCH TO AP MODE AND BASIC CONFIGURATION	44
4-2 SECURITY SETTINGS.....	47
4-3 ACCESS CONTROL	49
4-4 CONNECTION TABLE	51
4-5 EVENT LOG	53
4-6 STATISTICS	54

CHAPTER 5: APPENDIX.....	56
5-1 TROUBLESHOOTING	56
5-2 GLOSSARY	58

Chapter 1: Introduction

WNL-U554A wireless USB adapter adapts IEEE 802.11n technology compatible with IEEE 802.11b and IEEE 802.11g, offering a reliable and cost effective solution. With the interface of USB 2.0 that integrates one transmit channel and one concurrent receive channel, the speed could be up to 150Mbps upload and 150Mbps download data rate as well as with detachable RP-SMA connector design, allow users manually exchange higher gain antenna for further wireless coverage range.

The WNL-U554A provides advanced security, not only 64/128-Bits WEP, but also WPA, WPA2 and LEAP encryption. Moreover, in order to simplify the security configurations, WPS (Wi-Fi Protected Setup) offers a convenient and fast method for users as well. Besides, QoS-WMM maintains the high priority transition quality for such multimedia packets.

WNL-U554A supports Windows base systems, included 2000, XP and Vista 32/64-bit. With high speed capability, users get higher wireless transmission in anytime, anywhere.

1-1 Features

- 2.4GHz ISM band, unlicensed operation
- Compliant with IEEE 802.11b, IEEE 802.11g, IEEE 802.11n
- USB 2.0/1.1 attached interface
- Detachable RP-SMA connector with 3dBi dipole antenna
- Antenna: Internal two Antennas with one TX and one RX
- Provides up to 150Mbps download and 150Mbps upload data rate
- Supports Wi-Fi Protected Setup (WPS)
- Supports WEP 64/128, WPA, WPA-PSK, WPA2, WPA2-PSK, LEAP
- Cisco CCX support
- Supports QoS-WMM (WiFi Multi-Media) function / WMM-PS
- Supports Software AP mode
- Supports most popular operating systems including Windows 2000 , XP , and Vista 32/64-bit

1-2 Safety Information

In order to keep the safety of users and your properties, please follow the following safety instructions:

1. This USB wireless network card is designed for indoor use only. DO NOT expose this network card to direct sun light, rain, or snow.
2. DO NOT put this network card at or near hot or humid places, like kitchen or bathroom. Also, do not left this wireless network card in the car in summer.
3. This network card is small enough to put in a child's mouth, and it could cause serious injury or could be fatal. If they throw the network card, the card will be damaged. PLEASE KEEP THIS NETWORK CARD OUT THE REACH OF CHILDREN!
4. This network card will become hot when being used for long time (This is normal and is not a malfunction). DO NOT put the network card on a paper, cloth, or other flammable objects after the network card has been used for a long time.
5. There's no user-serviceable part inside the network card. If you found that the network card is not working properly, please contact your dealer of purchase and ask for help. DO NOT disassemble the network card by your self, warranty will be void.
6. If the network card falls into water, DO NOT USE IT AGAIN BEFORE YOU SEND THE CARD TO THE DEALER OF PURCHASE FOR INSPECTION.
7. If you smell something strange or even see some smoke coming out from the network card, switch the computer off immediately, and call dealer of purchase for help.

1-3 Specification

Interface	USB 1.1 / 2.0, Type-A
Standards Conformance	IEEE 802.11n/802.11b/802.11g compatible
Data Rate	802.11n (20MHz):up to 72 Mbps 802.11n (40MHz):up to 150 Mbps 802.11g:6/9/12/24/36/48/54Mbps 802.11b:1/2/5.5/11Mbps
Operating Mode	Infrastructure / Ad-Hoc Mode, Soft-AP Mode
Security	WEP 64/128, WPA, WPA2 Cisco CCX support
RF Modulation	802.11b:Direct Sequence Spread Spectrum (DSSS): DBPSK, DQPSK, CCK 802.11g:Orthogonal Frequency Division Multiplexing (OFDM): BPSK, QPSK, 16QAM, 64QAM 802.11n:Orthogonal Frequency Division Multiplexing (OFDM): BPSK, QPSK, 16QAM, 64QAM
Output Power	14±1dBm@11n 17±1dBm@11b 14±1dBm@11g
Frequency Band	2.4000-2.4835 GHz
Management	Built-in utility or Windows XP Zero Configuration utility
Operating systems	Windows 2000 / XP / Vista 32/64-bit

1-4 Package Contents

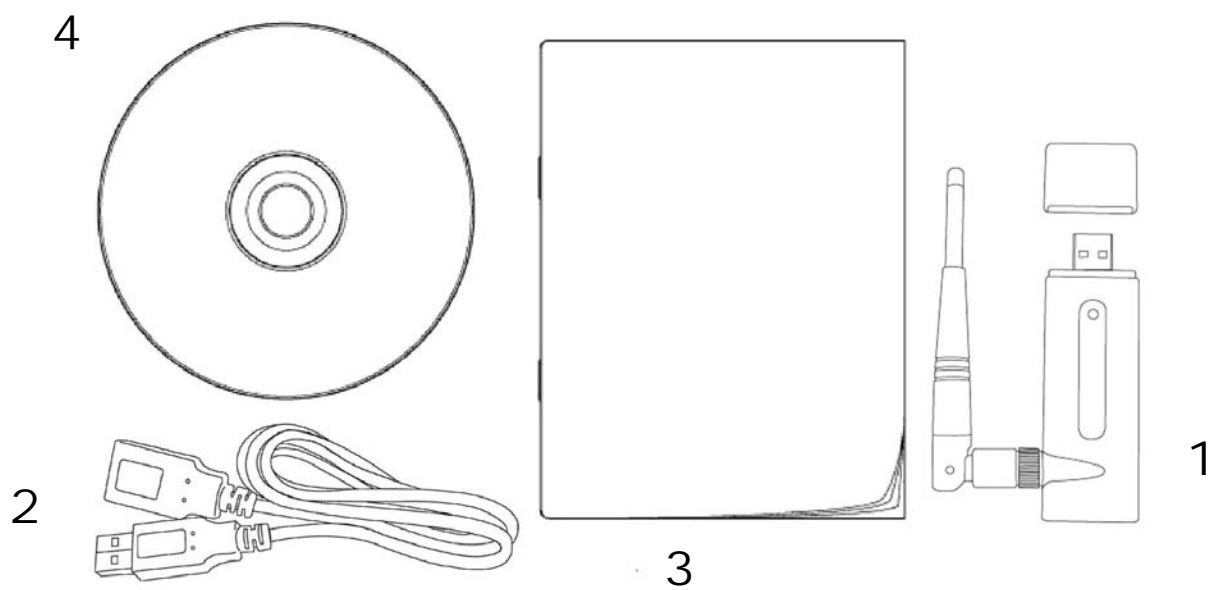
Before you begin the installation, please check the items of your package. The package should include the following items:

WNL-U554A x 1

USB Cable x 1

Quick Installation Guide x 1

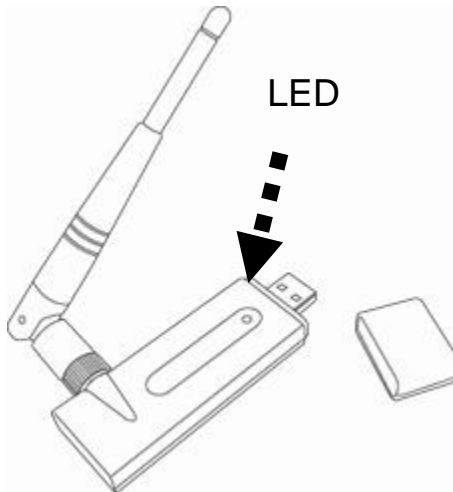
CD-ROM x 1 (Including User's Manual and Utility)



If any of the above items is missing, contact your supplier as soon as possible.

1-5 Hardware Info

1. USB Connector
2. Connector Cap (To protect USB connector when not in use)
3. Link/Activity LED



LED	Light Status	Description
Link/ Activity	On	Linked to a wireless access point / Transferring data
	Off	No wireless activity

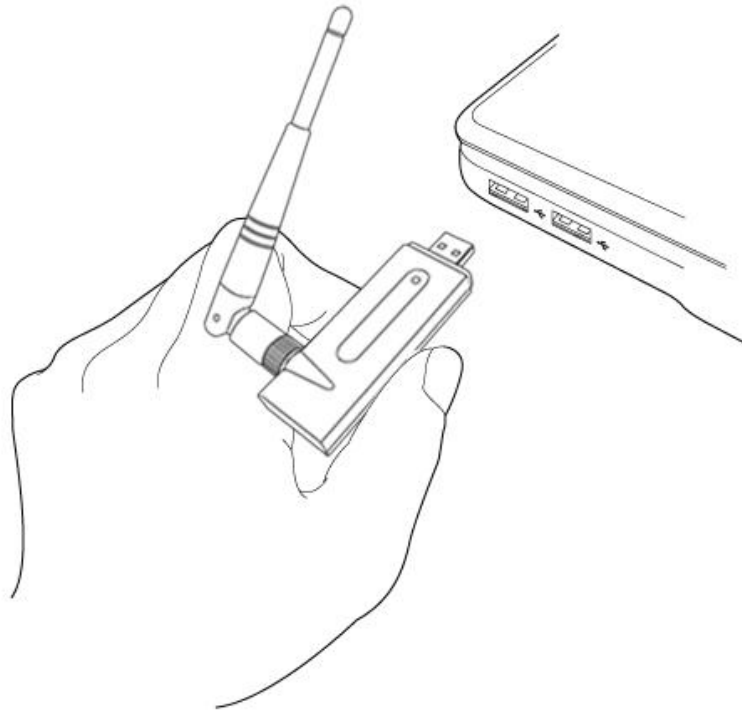
Chapter 2: Installation



Note 1: If you had ever installed the other Wireless Cards before, please uninstall the existed drivers and utilities first.

Note 2: The installation below is performed in Windows XP system. The installations in Windows 2000 and Vista are similar.

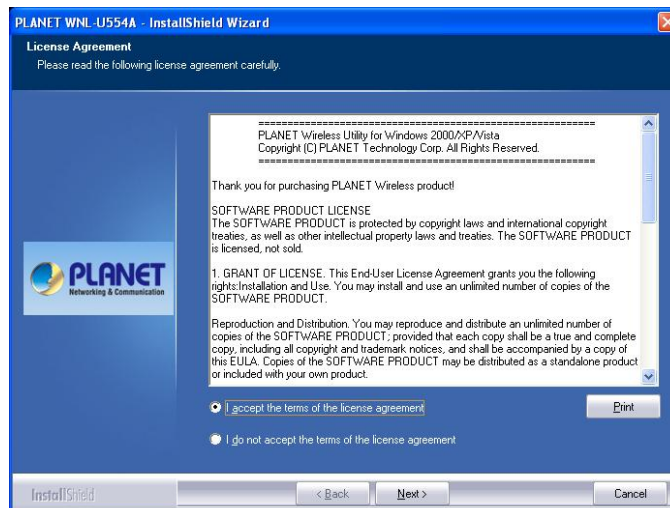
1. Insert the USB wireless network card into an empty USB 2.0 port of your computer when computer is switched on. Never use force to insert the card, if you feel it's stuck, flip the card over and try again.



2. The system will find the new hardware and display the below message. Click "Cancel" to skip.



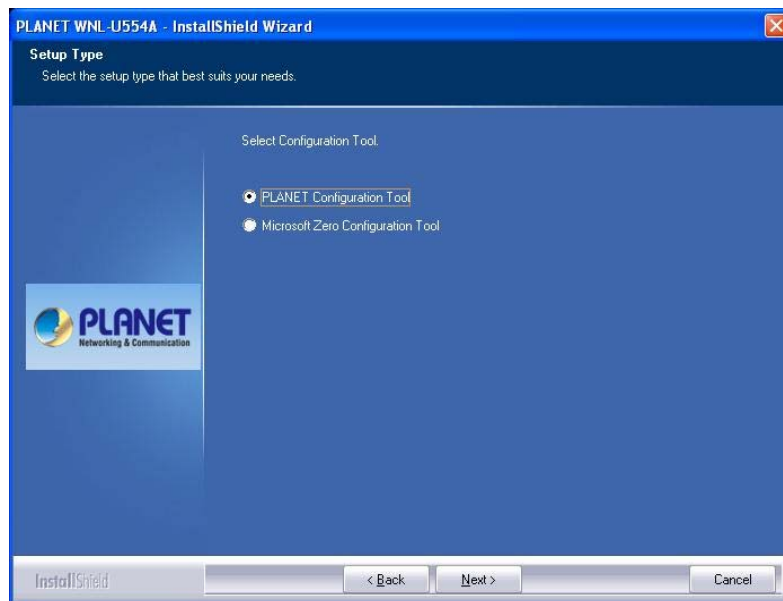
3. Insert the bundled CD into the CD-ROM drive to launch the auto run program. Once completed, a menu screen will appear. Click the "2000/XP/Vista Utility" hyperlink to initiate the install wizard.
4. Read the License Agreement carefully. Click "Yes" to accept it and continue.



5. It is suggested to use "Install driver and Planet WLAN Utility", which provides full installation to manage the WNL-U554A; Otherwise, choose "Install driver only" for only installing driver. Then click "Next" to continue.



6. It is suggested to use "PLANET configuration Tool", which the WNL-U554A Utility; Otherwise; choose "Microsoft Zero Configuration Tool" for only installing Microsoft wireless configuration. Then click "Next" to continue.



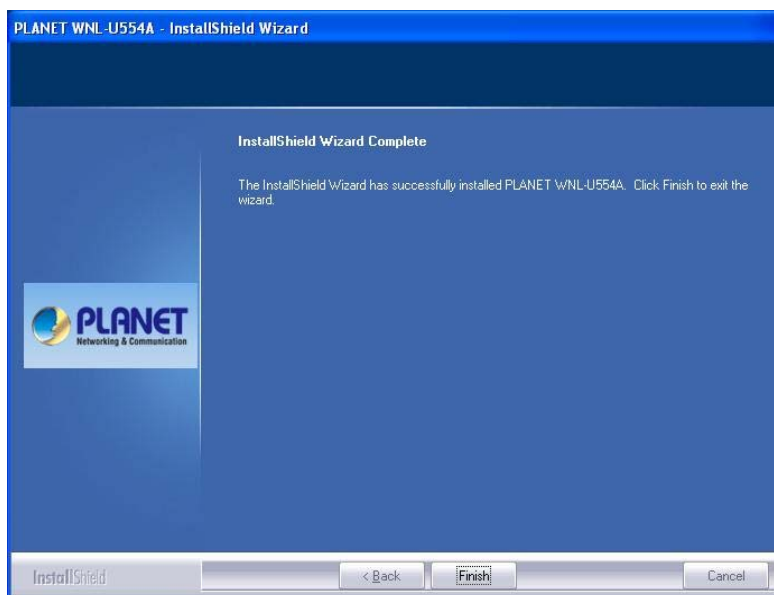
7. Click "Install" to begin the installation.



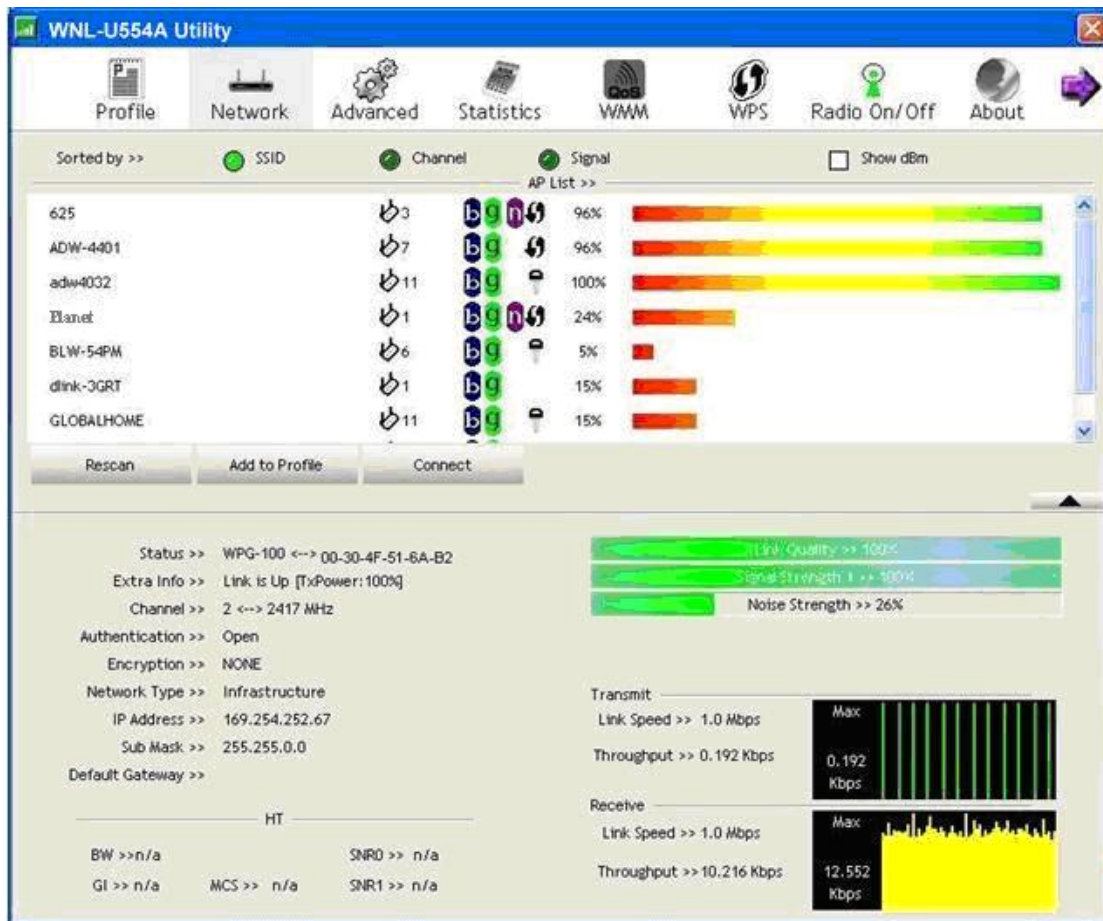
8. If the screen appears during installation, please click “Continue Anyway” to continue.



9. Please click “Finish” to finish the installation.



- The WNL-U554A utility will appear on the screen. Please select the AP you would like to connect and press "Connect" button and fill in the security information, and then click "OK" to connect the wireless network.



Chapter 3: General Configuration

The Configuration Utility appears as an icon on the system tray of Windows while the card is running. You can open the utility by double-click on the icon.

Right click the icon; there are some items for you to operate the configuration utility.

Launch Config Utilities: open the Configuration Utility tool.

Use Zero Configuration as Configuration Utility: use Windows XP built-in wireless configuration utility (Windows Zero Configuration) to configure the card.

Switch to AP Mode: the WNL-U554A can act as an AP. Please refer to next chapter for details.

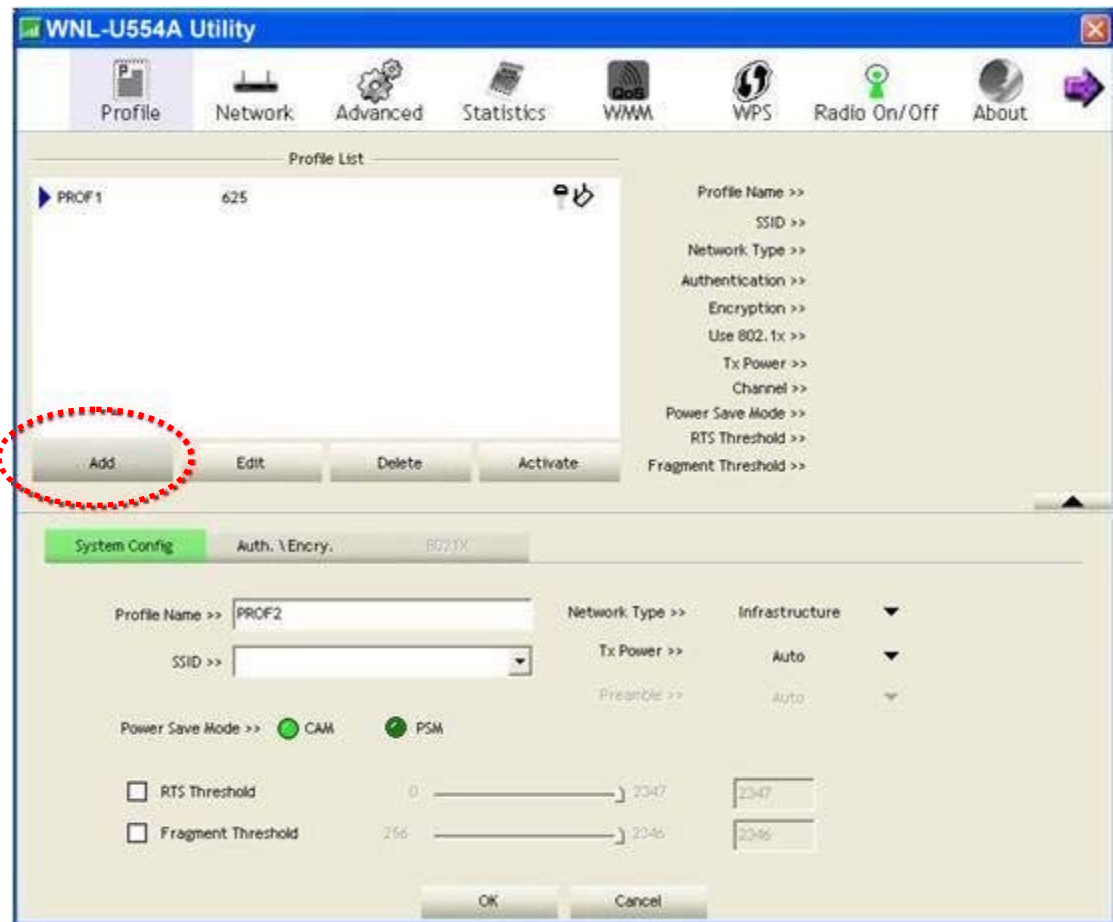
Exit: close the Configuration Utility tool.



3-1 Profile Management

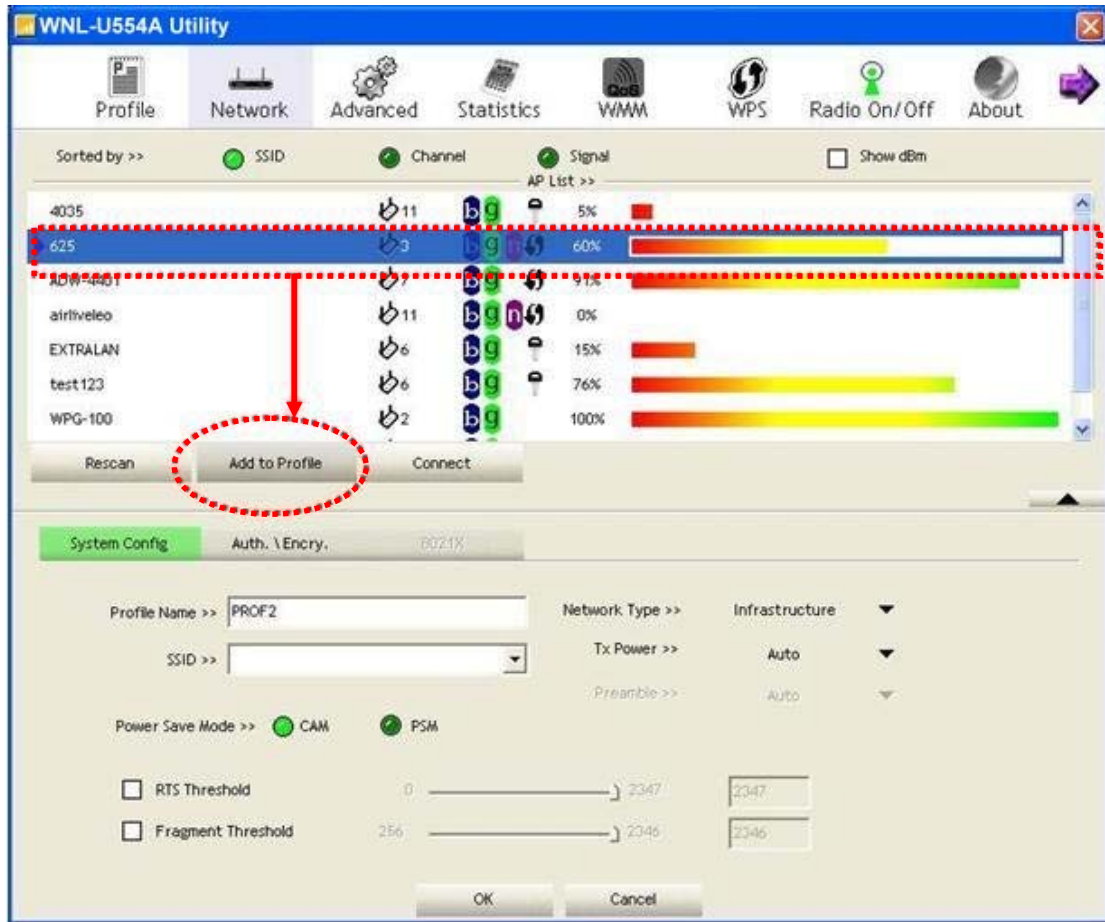
If you need to connect to different wireless access points at different time, like to access point of your home, office, cybercafé, or public wireless service, you can store the connection parameters (encryption, passphrase, security etc.) as a profile for every access point, so you don't have to input these parameters every time you want to connect to a specific wireless access point.

If you want to click new profile, click 'Profile' menu, then click 'Add' button.



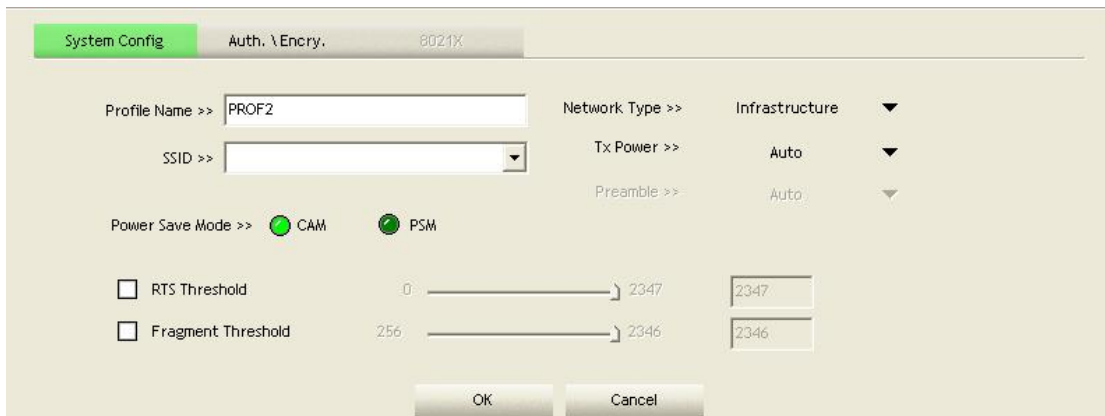
Parameter	Description
Profiles List	The profiles list display all the profiles and the relative settings of the profiles including Profile Name, SSID etc.
Add / Edit / Delete Button	Click these buttons to add / edit / delete the selected profiles.
Activate Button	Click "Activate" to connect to the selected profile. When a profile is activated, the card will be initially connected to the profile.

Or, you can add a connected wireless access point or wireless device to a profile by clicking 'Network' tab, then click 'Add to Profile' button:



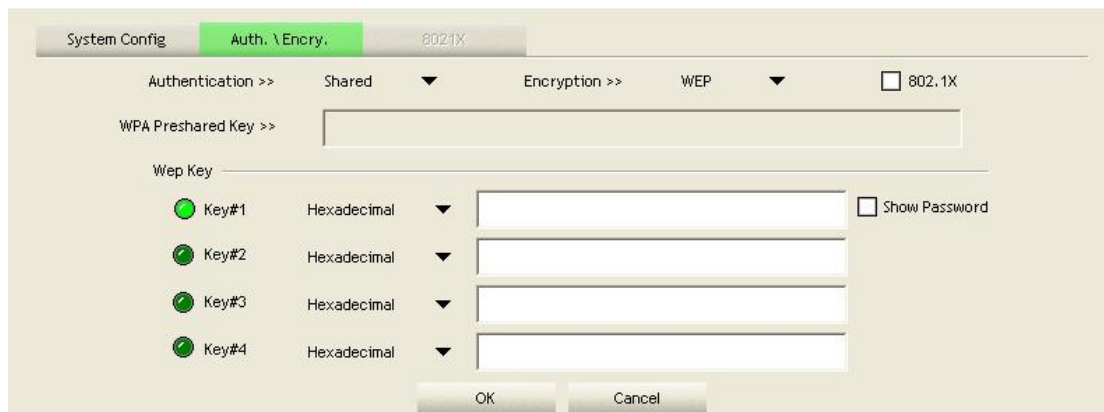
3-1-1 System Configuration

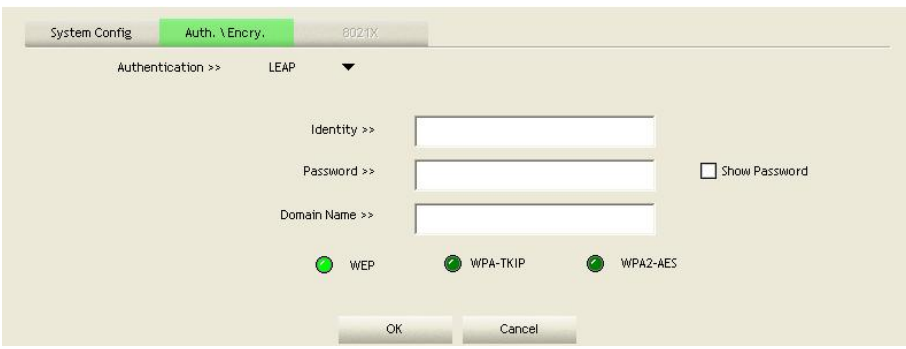
And you can set the parameter for this profile here:



Parameter	Description
Profile Name	Define a recognizable profile name for you to identify the different networks.
SSID	<p>The SSID (up to 32 printable ASCII characters) is the unique name identified in a WLAN. The ID prevents the unintentional merging of two co-located WLANs.</p> <p>You may specify a SSID for the card and then only the device with the same SSID can interconnect to the card. If you want to add the network nearby to the profile list, pull down the menu, all the networks will be listed for you to add one of them to the profile list.</p>
Network Type	<p>Infrastructure – This operation mode requires the presence of an 802.11 Access Point. All communication is done via the Access Point or Router.</p> <p>Ad-Hoc – Select this mode if you want to connect to another wireless station in the Wireless LAN network without through an Access Point or Router.</p>
Tx Power	<p>You can select the wireless output power here. If you're not too far from access point (good signal reception), you can select a lower output power to save energy; for a distant access point, you can select a higher output power.</p> <p>It's suggested to select 'Auto' to let setup utility decide the best output power for you.</p>
Power Save Mode	<p>The power saving function is only available when the network type is in Infrastructure.</p> <p>CAM (Constantly Awake Mode) – The card will always set in active mode.</p> <p>PSM (Power Saving Mode) – Enable the card in the power saving mode when it is idle.</p>
RTS Threshold	Minimum packet size required for an RTS (Request To Send). For packets smaller than this threshold, an RTS is not sent and the packet is transmitted directly to the wireless network. Select a setting within a range of 0 to 2347 bytes. Minor change is recommended.
Fragment Threshold	The value defines the maximum size of packets; any packet size larger than the value will be fragmented. If you have decreased this value and experience high packet error rates, you can increase it again, but it will likely decrease overall network performance. Select a setting within a range of 256 to 2346 bytes. Minor change is recommended.

3-1-2 Authority/Encryption setting



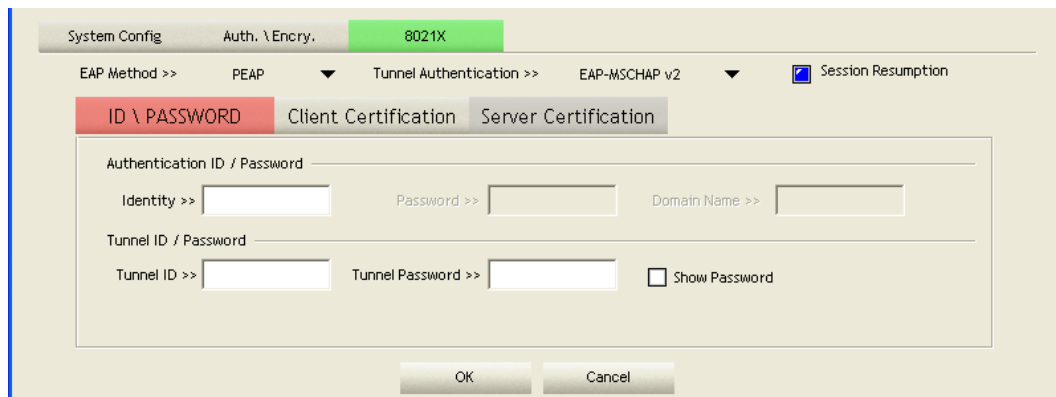
Parameter	Description
Authentication Type	<p>This setting has to be consistent with the wireless networks that the card intends to connect.</p> <p>Open – No authentication is needed among the wireless network.</p> <p>Shared – Only wireless devices using a shared key (WEP Key identified) are allowed to connecting each other.</p> <p>LEAP – LEAP is a pre-EAP, Cisco-proprietary protocol, with many of the features of EAP protocols. Cisco controls the ability of other vendors to implement this protocol, so it should be selected for use only when limited vendor choice for client, access-point, and server products is not a concern. If you select 'LEAP', the following message will be displayed. Please input LEAP identity, password, domain name, and select encryption type. You can check 'Show Password' box so the password you inputted will be displayed as you type, but not replace by asterisk.</p>  <p>WPA – WPA provides a scheme of mutual authentication using either IEEE 802.1x/Extensible Authentication Protocol (EAP) authentication or pre-shared key (PSK) technology. It provides a high level of assurance to enterprises, small businesses and home users that data will remain protected and that only authorized users may access their networks. For enterprises that have</p>

	<p>already deployed IEEE 802.1x authentication, WPA offers the advantage of leveraging existing authentication databases and infrastructure.</p> <p>WPA-PSK – It is a special mode designed for home and small business users who do not have access to network authentication servers. In this mode, known as Pre-Shared Key, the user manually enters the starting password in their access point or gateway, as well as in each wireless station in the network. WPA-PSK takes over automatically from that point, keeping unauthorized users that don't have the matching password from joining the network, while encrypting the data traveling between authorized devices.</p> <p>WPA2 – Like WPA, WPA2 supports IEEE 802.1 x/EAP authentications or PSK technology. It also includes a new advanced encryption mechanism using the Advanced Encryption Standard (AES). AES is required to the corporate user or government users. The difference between WPA and WPA2 is that WPA2 provides data encryption via the AES. In contrast, WPA uses Temporal Key Integrity Protocol (TKIP).</p> <p>WPA2-PSK – WPA2-PSK is also for home and small business. The difference between WPA-PSK and WPA2-PSK is that WPA2-PSK provides data encryption via the AES. In contrast, WPA-PSK uses Temporal Key Integrity Protocol (TKIP).</p>
Use 802.1x	Enable 802.1x wireless authentication. Please click '802.1x Setting' button to set 802.1x parameters. (See next section).
Encryption Mode	<p>None – Disable the encryption mode.</p> <p>WEP – Enable the WEP Data Encryption. When the item is selected, you have to continue setting the WEP Encryption keys.</p> <p>TKIP – TKIP (Temporal Key Integrity Protocol) changes the temporal key every 10,000 packets (a packet is a kind of message transmitted over a network.) This insures much greater security than the standard WEP security.</p> <p>AES – AES has been developed to ensure the highest degree of security and authenticity for digital information and it is the most advanced solution defined by IEEE 802.11i for the security in the wireless network.</p> <p>Note: All devices in the network should use the same encryption method to ensure the communication.</p>
Show Password	Check this box and all passphrases or security keys you inputted will be displayed as you type, but not replace your input with asterisk.
WPA Pre-Shared Key	The WPA-PSK key can be from 8 to 64 characters and can be letters or numbers. This same key must be used on all of the wireless stations in the network.
WEP Key	The WEP keys are used to encrypt data transmitted in the wireless network.

(Key1 ~ Key4)	<p>There are two types of key length: 64-bit and 128-bit. Select the default encryption key from Key 1 to Key 4 by selected the radio button.</p> <p>Fill the text box by following the rules below:</p> <p>64-bit – Input 10-digit Hex values (in the “A-F”, “a-f” and “0-9” range) or 5-digit ASCII characters (including “a-z” and “0-9”) as the encryption keys. For example: “0123456aef” or “test1”.</p> <p>128-bit – Input 26-digit Hex values (in the “A-F”, “a-f” and “0-9” range) or 13-digit ASCII characters (including “a-z” and “0-9”) as the encryption keys. For example: “01234567890123456789abcdef” or “administrator”.</p>
---------------	--

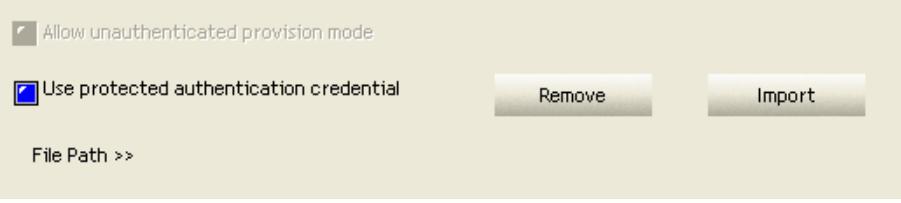
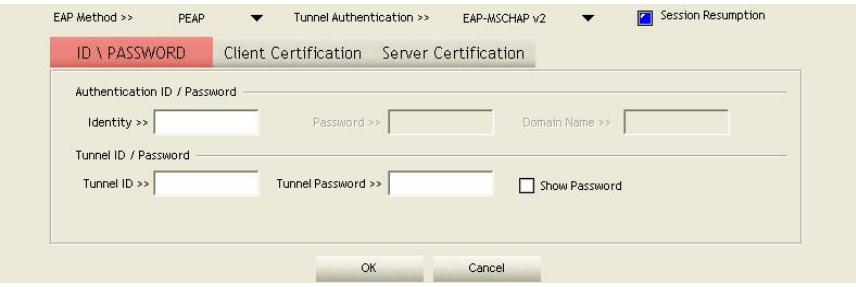
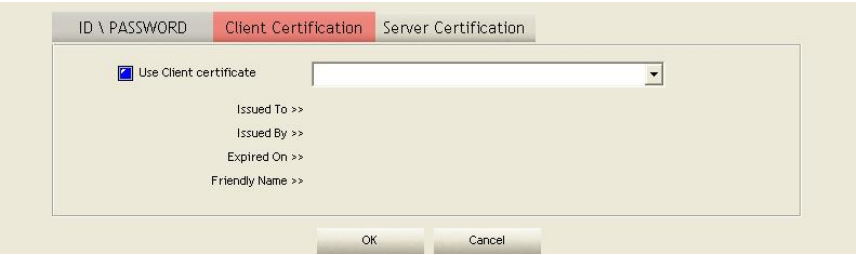
3-1-3 Using 802.11x

To set 802.1x authentication for the access point. Please click ‘802.1X’ tab:



Here are descriptions of every setup item:

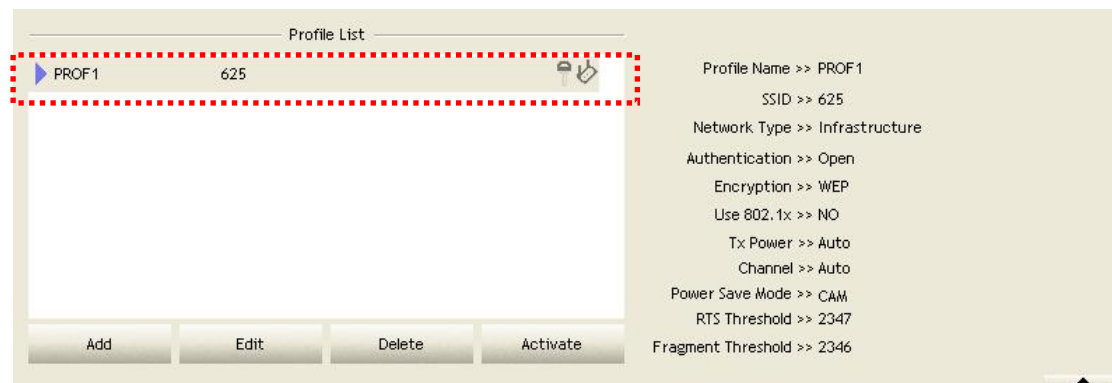
Parameter	Description
EAP Method	Select 802.1x EAP method from dropdown menu. Please ask the administrator of the access point you wish to connect to select a correct EAP method.
Tunnel Authentication	<p>Select 802.1x tunnel authentication type from dropdown menu. Please ask the administrator of the access point you wish to connect to select a correct tunnel authentication method. This pull down menu is only available when authentication type you use is 'PEAP', 'TLS / Smart Card', or 'TTLS'.</p> <p>When you use 'EAP-FAST' as authentication type, the protocol setting is always 'Generic Token Card' and can not be changed. You also need to select 'Soft Token' or 'Static Password' as password in 'ID \ Password' setting.</p>

	<p>'EAP Fast' authentication type also have a sub-menu to set EAP fast-specific parameters:</p>  <p>If you need to use protected authentication credential, check 'Use protected authentication credential' box, and click 'Import' to load .pac credential file; to remove a loaded credential file, click 'Remove'.</p>
<p>Session Resumption</p>	<p>You can enable or disable session resumption here. If you don't know if you should enable session resumption or not, please ask your 802.1x authentication administrator.</p>
<p>ID \ Password tab</p>	<p>Input 802.1x username (ID) and password and other information if it is required here. Click 'Show Password' to show the password you typed.</p> 
<p>Client Certification tab</p>	<p>Use this tab to select a local certificate from dropdown menu. If the access point you wish to connect required a specific client certificate, the certificate must be installed on your computer, and you can select the certificate here.</p> 
<p>Server Certification tab</p>	<p>Use this tab to use server-based certification. Please select a CA (Certificate Authority) from dropdown menu. If intermediate certificates are allowed, please select 'Allow intermediate certificates'. Also, if you need to specify CA server's name, you can specify it in 'Server name' field. You can select 'Server name must match', so the CA server's name must be the same with the value you set in 'Server name' field; If only the domain name part of full server name must the same with the value you set in 'Server name' field,</p>

select 'Domain name must end in specified name'.



After you finish all settings, click 'OK' to save settings and exit. The profile you just created will be displayed:



3-2 Network-Configuration Utility

After the driver is correctly installed, it will try to connect to any unencrypted wireless access point automatically. If you want to connect to a specific wireless access point, or the access point you wish to connect uses encryption, you have to configure the wireless network card and input required parameters, to get connected to the wireless access point you wish to connect.

3-2-1 Using configuration Utility

The current status of wireless connection will be displayed by WNL-U554A configuration utility icon:



Wireless connection is established, good signal reception.



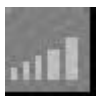
Wireless connection is established, normal signal reception.



Wireless connection is established, weak signal reception.



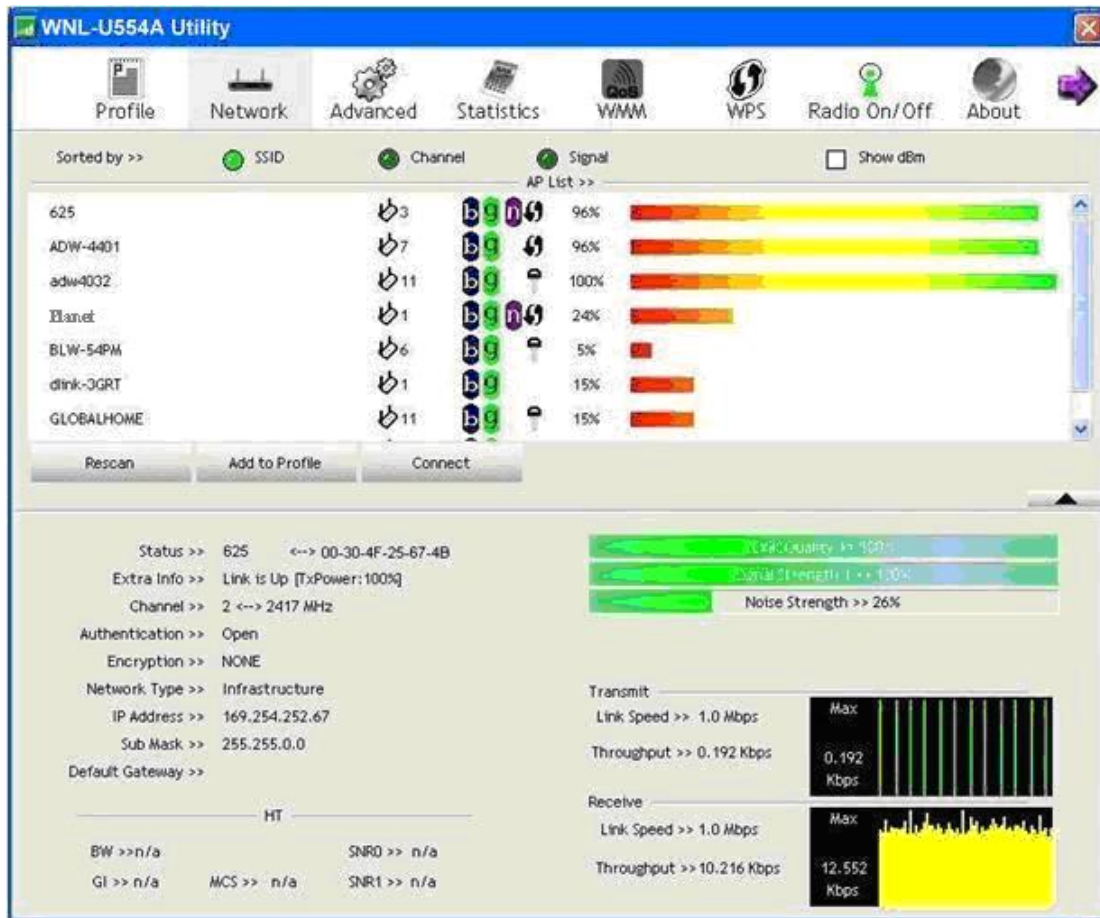
Wireless network doesn't connection.



Wireless network card is not detected.

There are two ways you can configure WNL-U554A network card to connect to wireless access point: using the **WNL-U554A configuration utility** and using **built-in windows zero configuration utility**.

From the “Network” screen, all the networks nearby will be listed. You can change the connection to another network or add one of the networks to your own AP list.



Parameter	Description
AP List	This list shows all available wireless networks within range of your card. It also displays the information of the networks including the SSID, BSSID, Signal Strength, Channel, Encryption, Authentication and Network Type. If you want to connect to any networks on the list, double-click the item on the list, and the card will automatically connect to the selected network.
Rescan	Click “Rescan” button to collect the new information of all the wireless networks nearby.
Add to Profile Button	Add the selected network to Profiles list.
Connect	Click “Connect” to connect to the selected network.

3-2-2 Connect to an Access Point

There are two kinds of wireless connection mode: Infrastructure and Ad-Hoc.

Infrastructure mode is used by wireless access points, which is able to establish wireless connection for you and other wireless / wired network clients.

Ad-Hoc mode is also known as 'point-to-point' mode, and in this mode, wireless devices such as computer or PDA will not be capable to establish wireless connection with more than one wireless device, and is suitable for establishing a one-to-one wireless connection between two wireless devices.

Before you can connect to any wireless access point or device by infrastructure or Ad-Hoc mode, there are two things you must know:

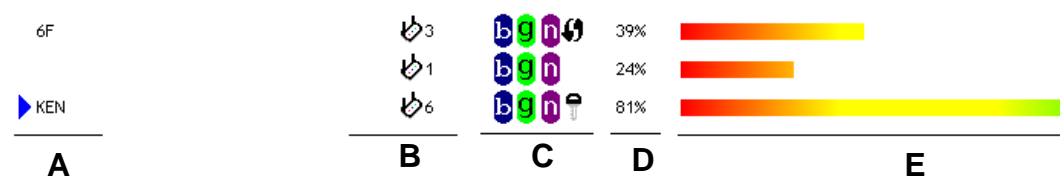
- a. Wireless device's 'SSID' (Service Set Identifier, someone will call it 'access point's name').

You can scan for the SSID of other wireless devices nearby, but if the SSID of the wireless device you wish to connect is hidden, you must know the exact SSID before you can establish connection with it.











- b. If the wireless device you wish to connect uses encryption, you must know its encryption key.

Please launch the Ralink setup utility and it will scan for wireless access points nearby. Scan results will be displayed here, please check if the wireless device (access point or another computer) with the SSID you wish to connect is shown here.

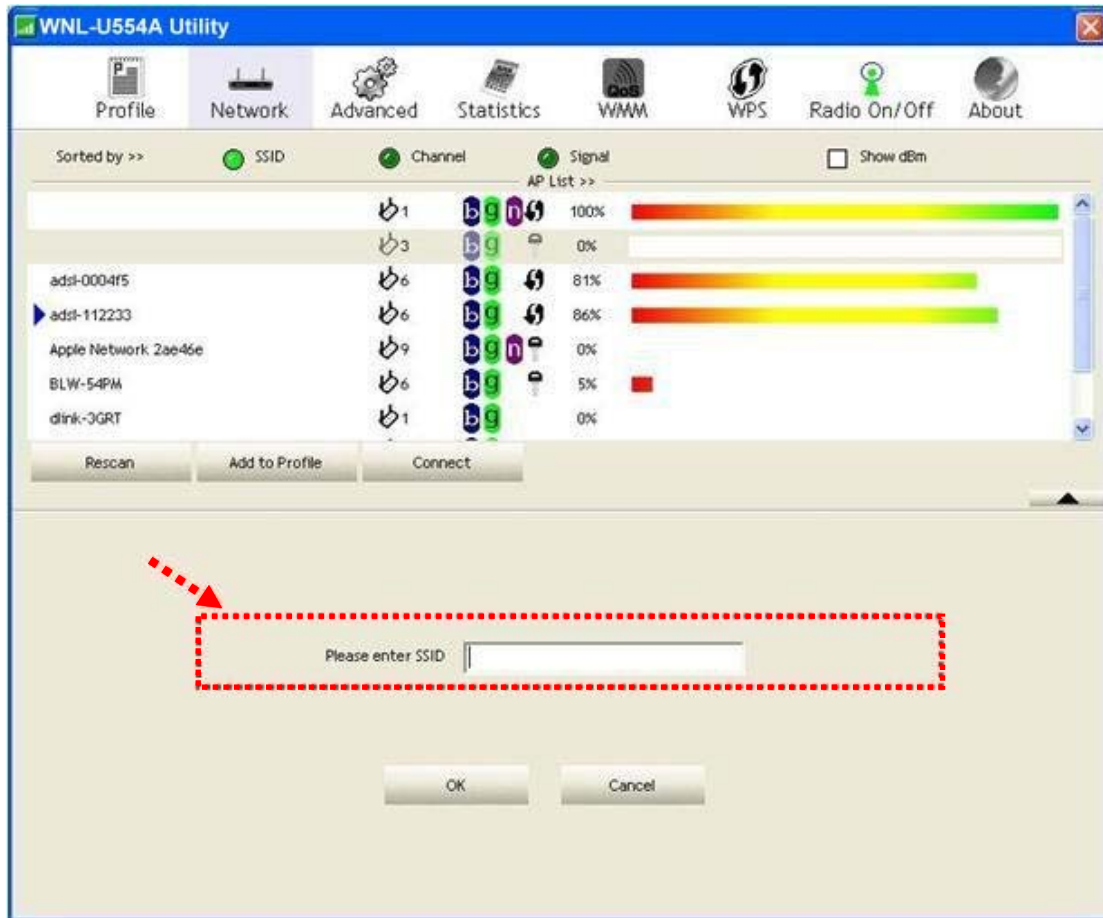
Scan results include 6 types of information, they are:



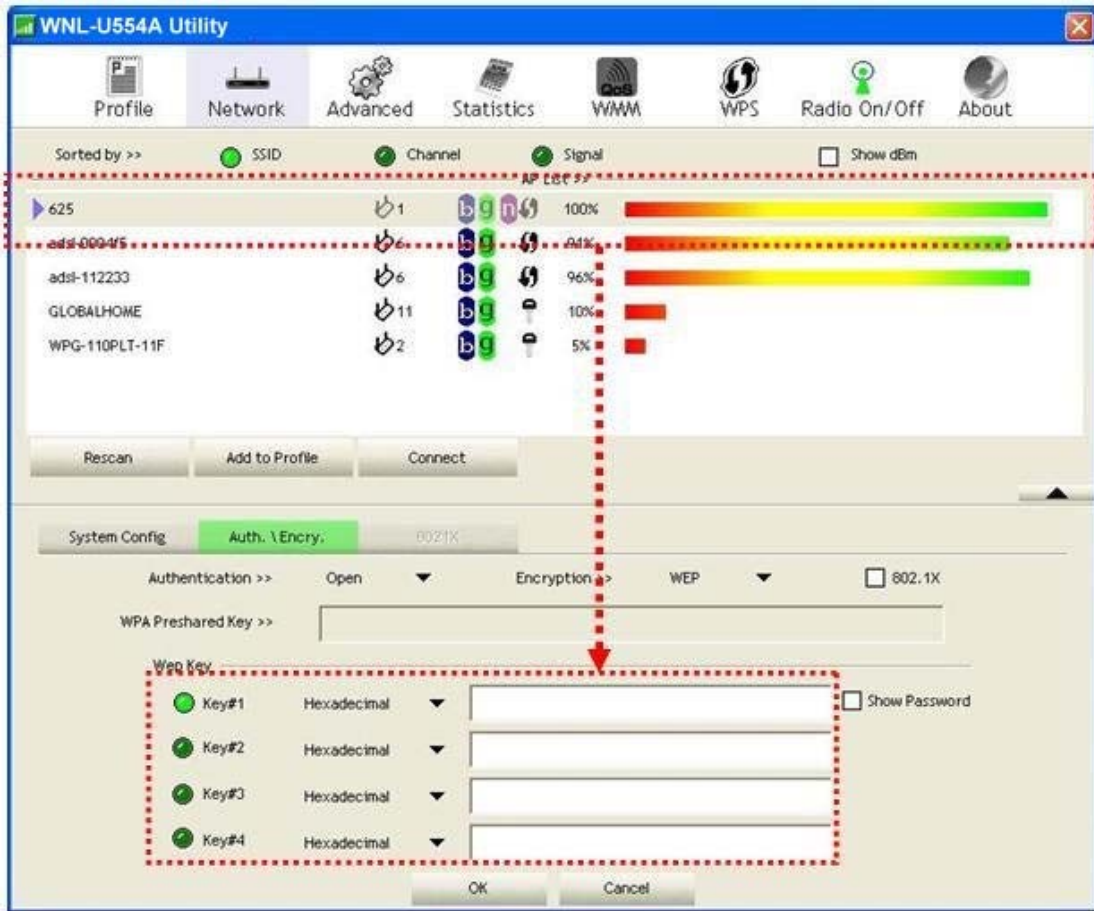
Parameter	Description
A	The SSID (Service Set Identifier) of wireless device. If nothing is displayed here, it means the SSID of this wireless device is hidden.


	If a  symbol appears in front of the name of wireless device, means you've established connected with that wireless device.
B	The type of this wireless device and the channel number of this wireless device.  Means this wireless device is an access point  Means this wireless device is a computer (Ad-Hoc mode, point-to-point connection)
C	The wireless standard supported by this access point is displayed here:  For 802.11n  For 802.11g  For 802.11b.  WS icon will appear when the access point supports WPS. If the access point uses encryption,.  A key icon will appear Note: When the access point supports WPS and WPS icon  is appeared, you will not see the key icon  here even through the access point uses encryption.
D	Shows the signal strength of access point by percentage.
E	Shows the bar graph of the signal strength

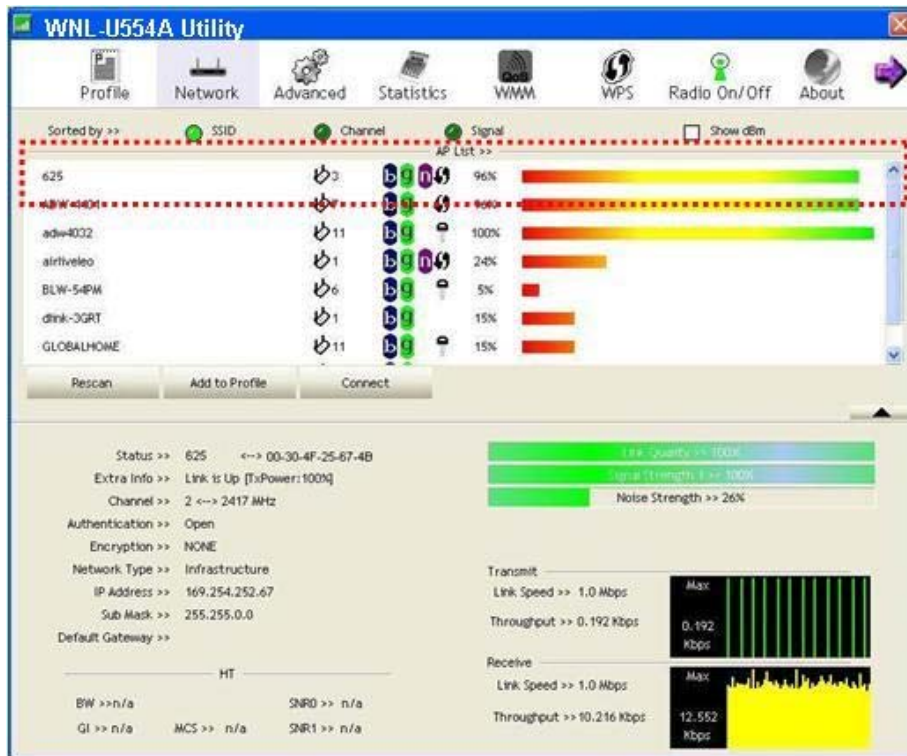
1. If the access point you selected does not enable encryption (The content of 'Encryption' field of the access point you selected is 'None', you'll be connected to this wireless access point within one minute.
2. If the access point you selected enables encryption, please proceed to next step.
3. If the wireless access point does not have SSID, you'll be prompted to input it here. Please ask the administrator of this AP and input the exact SSID here, then click 'OK' when ready. If the SSID you provided here is wrong, you'll not be able to connect to this access point. If the wireless access point you selected have SSID, please skip this step.



4. If the AP uses encryption, you have to input WEP passphrase or WPA preshared key. Please ask the administrator, and input the correct passphrase / preshared key here, then click 'OK'. If the value you inputted here is wrong, you will not be able to connect to this wireless access point. Authentication type is selected automatically, please don't change it. If the access point you selected does not enable encryption and does not require authentication, please skip this step.



5. If the wireless access point is successfully connected, you'll see a  symbol appears in front of the name of wireless device.



3-3 Advanced Settings



Parameter	Description
Wireless mode	Display the wireless operation mode of the network card.
Enable Tx Burst	Check this box to accelerate the data transmit rate. It may not work with all wireless access point and wireless devices.
Enable TCP Window Size	Check this box and the configuration utility will adjust TCP window size automatically to get better performance. It should be safe for most of wireless environments, but if you found some problem on data transfer, uncheck this box.
Fast Roaming	Check this box and you can control the threshold that the wireless network card should switch to another wireless access point with better signal quality. Only adjust value when you understand what it means and you need to roam between multiple access points.
Show Authentication Status Dialog	When your computer is being authenticated by wireless authentication server, a dialog window with the process of authentication will appear. This function is helpful to find out the problem when you can not be authenticated, and you can provide this information to authentication server's administrator for debugging purpose.
Enable CCX	Enable Cisco Compatible extensions. CCX is a wireless feature developed by Cisco used to improve the wireless performance with CCX compatible wireless devices. Check this box if you need to connect to CCX-compatible wireless devices. When you enabled CCX, the following setup items will become available:

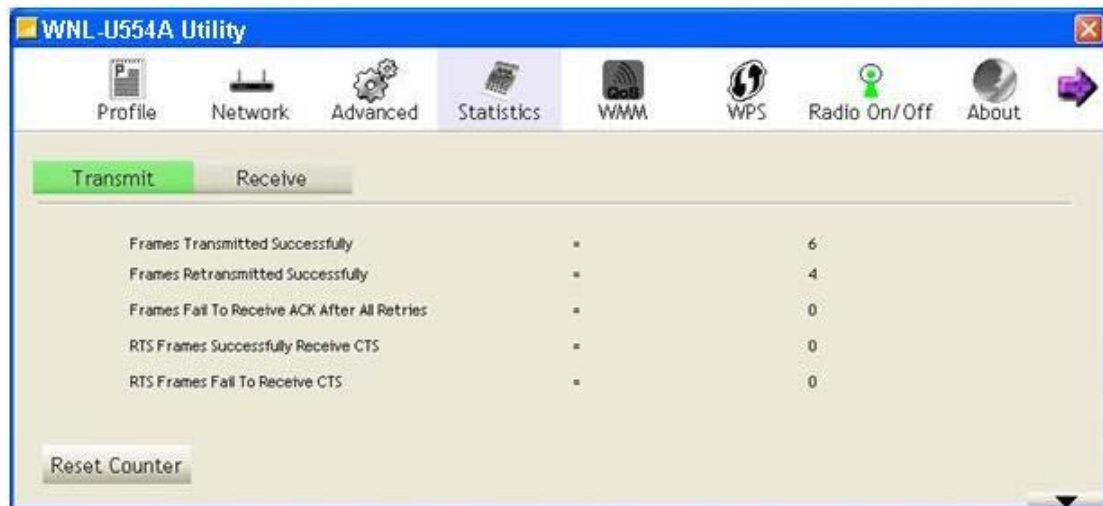
	<p>Turn on CCKM: Check this box to enable CCKM (Cisco Centralized Key Management), which enables wireless clients to roam between CCKM-enabled access points in very short time.</p> <p>Enable Radio Measurements: When you're connecting to CCX-compatible access point, check this box to enable radio measurement function to improve wireless connectivity.</p> <p>Non-Serving Channel Measurements Limit: When you're connecting to CCX-compatible access point, check this box to enable measurement on unused radio channels to improve wireless connectivity.</p>
--	--

After you finish the settings, click 'Apply' to apply new settings, and click 'OK' to close configuration utility.

3-4 View Network Link Statistics

The configuration utility provides information about network statistics and link status. If you want to know how your wireless network card works, you can use these functions to get detailed information about the wireless connection you're using.

Click 'Statistics' menu and the statistics of wireless connection will be displayed:



All connection-related statistics is displayed here. You can click 'Transmit' or 'Receive' tab, to view the statistics of transmitted or received packets. You can also click 'Reset Counter' button, to reset the statistics of all items back to 0.

3-5 WMM Setting

This wireless network card provides WMM (Wi-Fi Multimedia) function, which can improve the performance of certain network applications, like audio/video streaming, network telephony (VoIP), and others. When you enable the WMM function of this network card, you can define the priority of different kinds of data, to give higher priority to applications which require instant responding. Therefore you can improve the performance of such network applications.

In 'WMM Setup Status' block, current WMM settings will be displayed. And here are descriptions of every setup item:

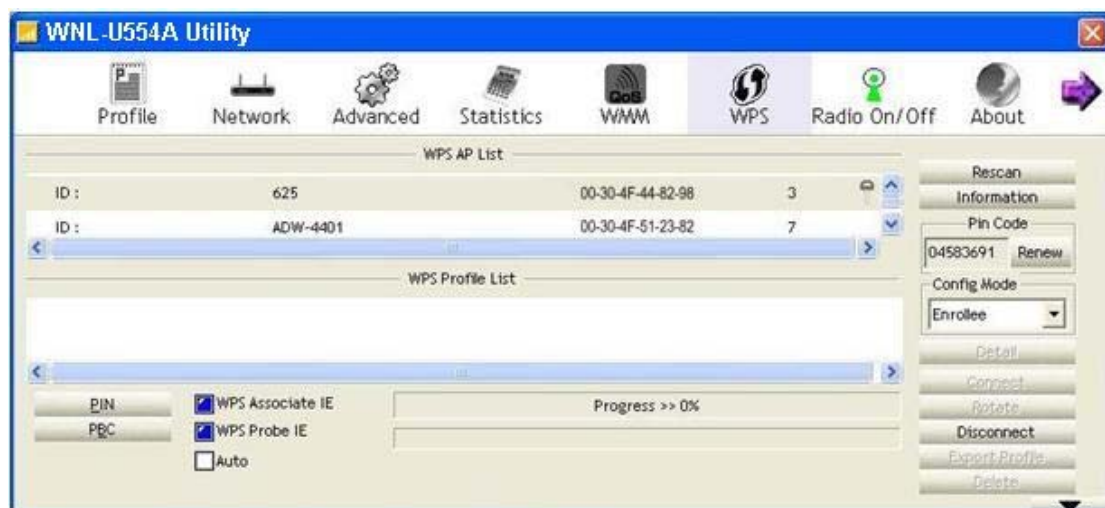
Parameter	Description
WMM Enable	Check this box to enable WMM function. Please click 'Apply' button on the right of this check box after you check or uncheck this box, so corresponding settings in this window will be activated or deactivated respectively.
WMM - Power Save Enable	Check this box to enable WMM power saving mode to save energy, and let your computer's battery live longer. You also have to select WMM power save modes here: AC_BE: Best Performance AC_BK: Worst Performance AC_VI: Video data has priority AC_VO: Voice data has priority
Direct Link Setup Enable	If you have another WMM-enabled wireless device, you can enter its MAC address here, then click 'Apply' button, and this network card will establish a direct link to the wireless device you specified here. You also have to specify the timeout value of this directly-linked wireless device. Valid values are from 1 to 65535 (seconds), and input '0' for infinity. If you want to remove a specific wireless device from direct link table, select the device and click this button to remove it.

3-6 WPS Configuration

Wi-Fi Protected Setup (WPS) is the latest wireless network technology which makes wireless network setup become very simple. If you have WPS-enabled wireless access point, and you want to establish a secure connection to it, you don't have to configure the wireless access point and setup data encryption. All you have to do is go to the WPS setup page of this wireless card, click a button, and then press a specific button on the wireless access point you wish to establish a secure connection - just three simple steps!

The WNL-U554A is compatible with WPS. To use this function, the wireless access point you wish to connect to must support WPS function too. Now, please follow the following instructions to establish secure connection between WPS-enabled wireless access point and your wireless network card:

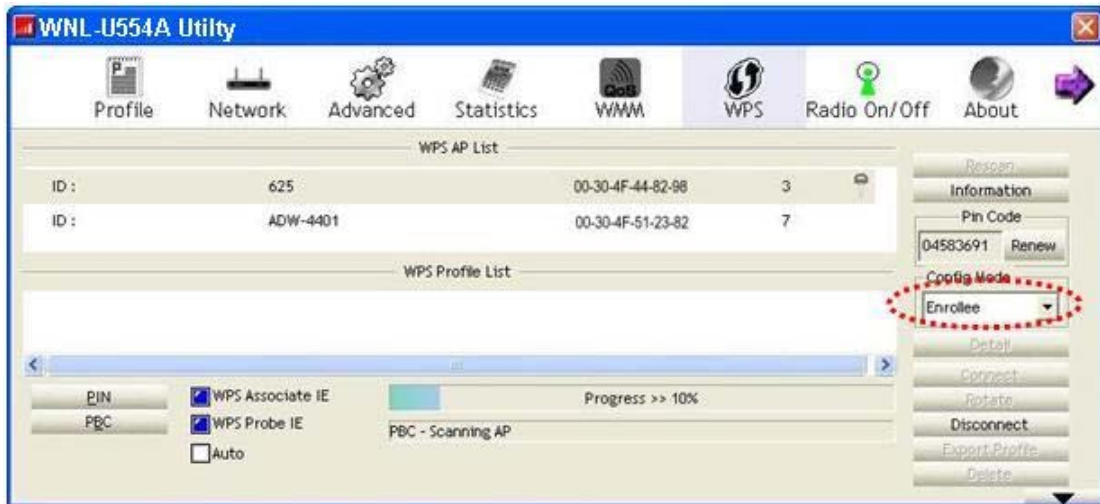
Click 'WPS' tab, and the following settings will appear:



3-6-1 WPS Setup - PBC (Push-Button Configuration)

1. Set 'Config Mode' to 'Enrollee', and then push the 'WPS' button on your wireless access point (the button used to activate WPS standby mode may have another name), or use other way to start WPS standby mode as the instruction given by your wireless access point's user manual.

You can also set 'Config Mode' to 'Registrar'. In this mode, this wireless network card will wait for other WPS-enabled access points to send WPS pairing requests. Please refer to the instruction given by your wireless access point's user manual to understand how to send WPS requests.



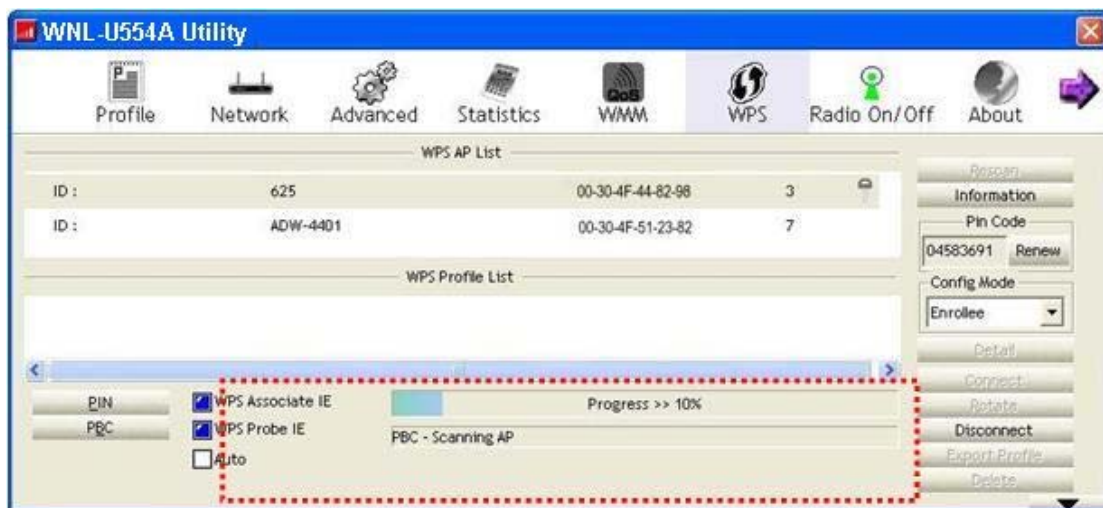
2. Before you start to establish the wireless connection by using WPS, you can click 'Rescan' button to search for WPS-enabled access points near you, to make sure the WPS function of your access point is activated.



3. All access points found will be displayed. Please make sure the access point you wish to connect is displayed. If not, please click 'Rescan' few more times. You can also click 'Information' button to see the detailed information about selected access point.
4. Click 'PBC' button now to start to establish wireless connection by WPS, and please be patient (This may require several seconds to one minute to complete). When you see 'WPS status is connected successfully' message, it means the connection between your WNL-U554A and access point is successfully connected by WPS, and the information about access point you connected to will be displayed.



5. Sometime WPS may fail, and you can click 'PBC' button few more times to try again. When an access point is connected, you can click 'Disconnect' to disconnect your wireless network card from a connected access point, or select another WPS-enabled wireless access point, then click 'Connect' to establish connection to selected access point, if there are more than one WPS-enabled access point found. You can also click 'Rotate' button, and next access point on the list will be selected to establish connection.

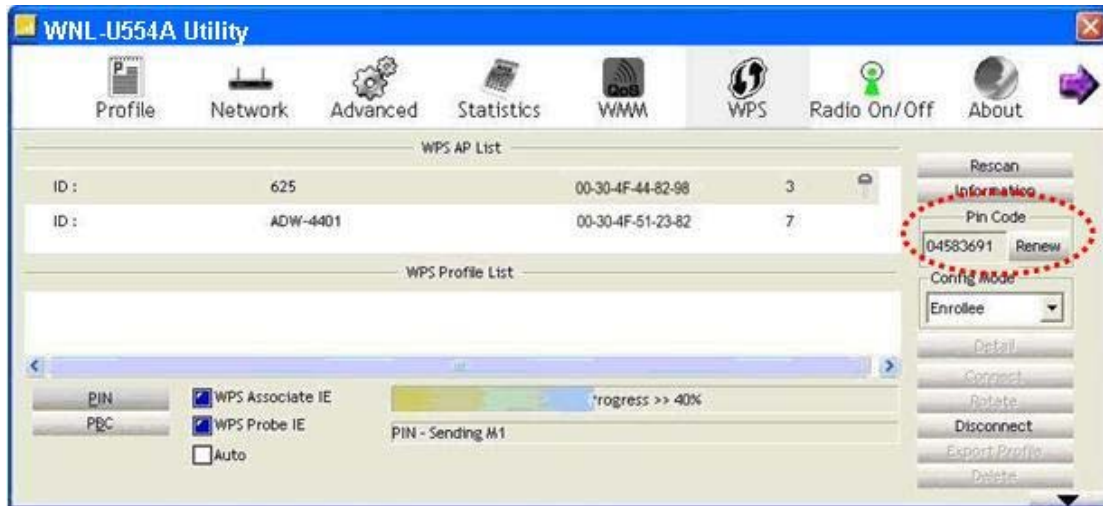


If you want to delete a found access point from the list, select it and click 'Delete' button.

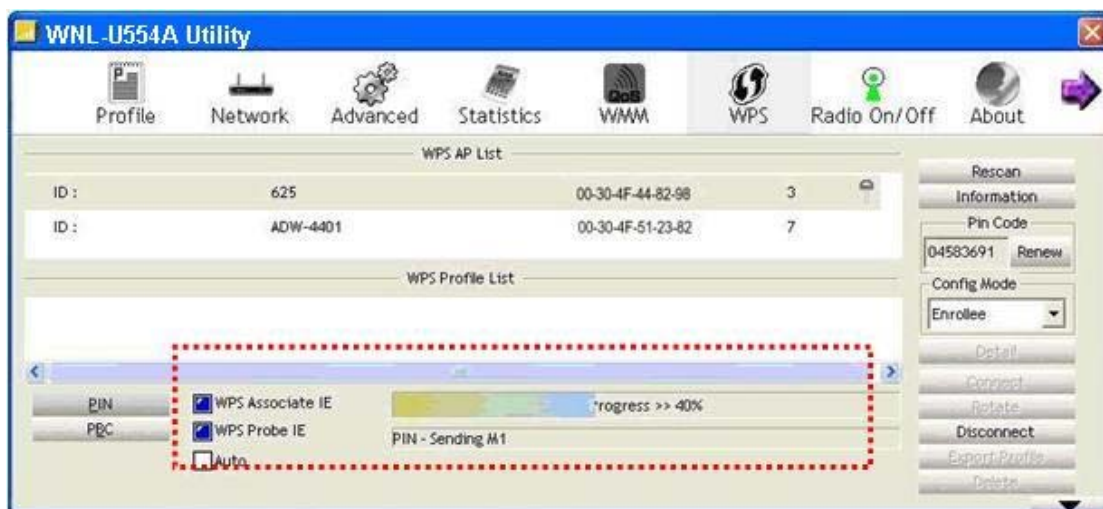
3-6-2 WPS Setup - PIN

1. The PIN number of your WNL-U554A is an eight-digit number located at the upper-right position of configuration utility. Remember it, and input the number to your wireless access point as the WPS PIN code (Please refer to the user manual of your wireless access point for instructions about how to do this).

NOTE: If you experienced problem with the pin code provided here, you can click 'Renew' to get a new pin code.



2. Click 'PIN' button now, and wait for few seconds to one minute. If a wireless access point with correct PIN code is found, you'll be connected to that access point.
3. You may have to click 'PIN' for few more times to try again. If you still can not connect to access point by this way, please make sure the PIN code you provided to access point is correct.



There are also some options available for WPS configuration:

WPS associate IE: Check this box to send the association request with WPS IE during WPS setup. This is optional and you can use default value if you don't know what will be affected.

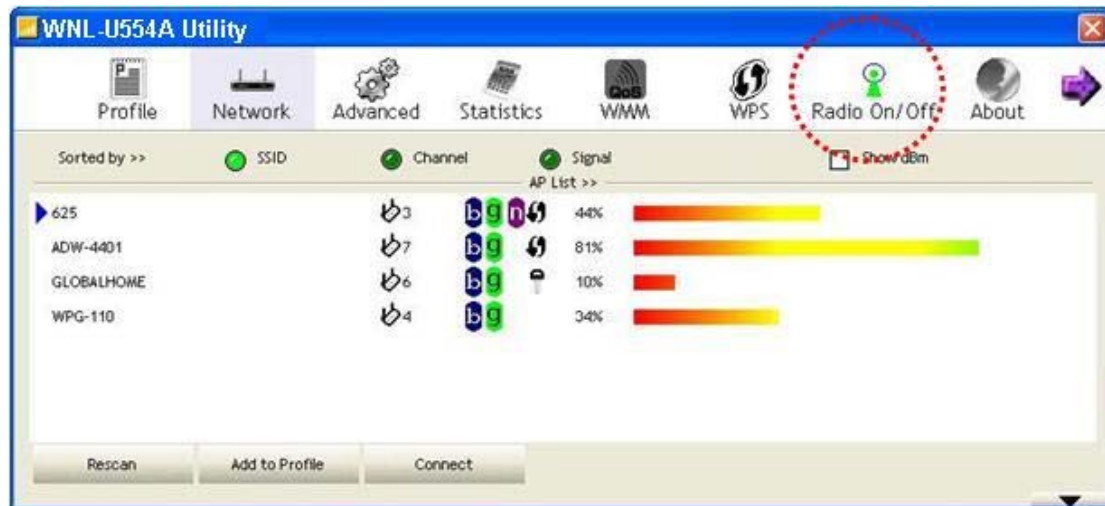
WPS probe IE: Check this box to send the WPS probe request with WPS IE during WPS setup. This is optional and you can use default value if you don't know what will be affected.


Auto: When in PIN mode, wireless access point to be connected will be selected automatically if this box is checked.

3-7 Radio On/Off

You can switch the wireless radio transceiver on and off by WNL-U554A utility, so if you want to disable wireless network function, you don't have to remove the network card physically.

1. To switch wireless radio on/off, please click 'Radio On/Off' button.



 Radio On/Off Wireless radio is on (Green)

 Radio On/Off Wireless radio is off (Red)

3-8 About

By choosing this option, you can click the hyperlink to connect the PLANET website. You can also obtain basic information about the WNL-U554A such as the Driver, Utility, EEPROM and Firmware Version. The MAC Address of the card is displayed in the screen as well.

You also can click the below link to surf PLANET website searing more other products.



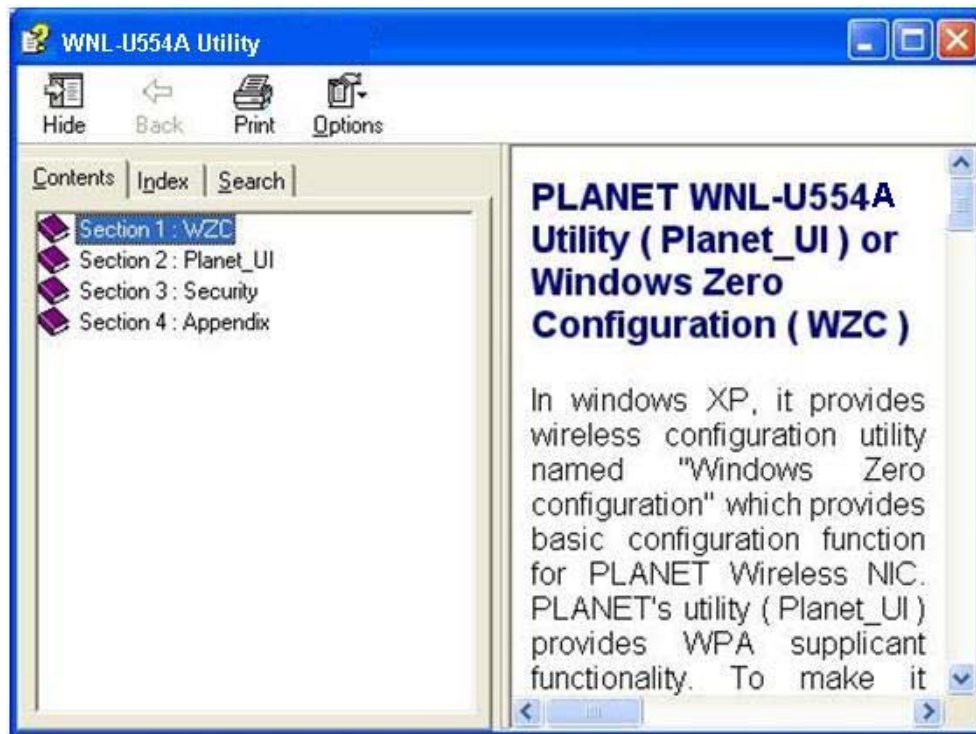
3-9 Help

If you need to know the directions of how to use specific function in the utility, please click 'Help' button. On-line help documents will be presented in Windows help format.



Help

Click this button to view on-line help documents.

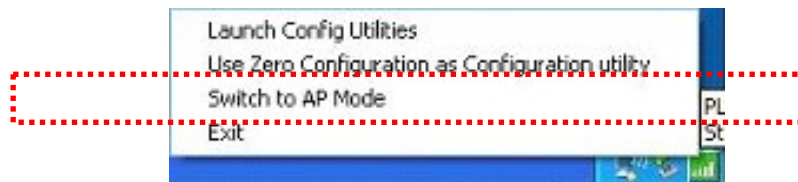


Chapter 4: Soft-AP Function

Except becoming a wireless client of other wireless access points, the WNL-U554A can act as a wireless service provider also! You can switch the WNL-U554A's operating mode to 'AP' mode to simulate the function of a real wireless access point by software, and all other computers and wireless devices can connect to your computer wirelessly, even share the internet connection you have!

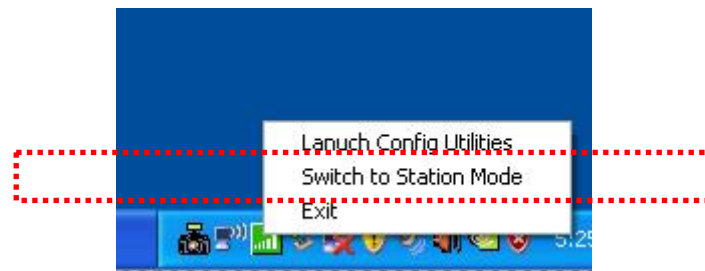
4-1 Switch to AP Mode and Basic Configuration

The operating mode of the wireless card is 'Station Mode' (becoming a client of other wireless access points) by default. If you want to switch to AP mode, please right-click WNL-U554A utility icon, and select 'Switch to AP Mode'.



After you select 'Switch to AP Mode', the WNL-U554A available options will change.

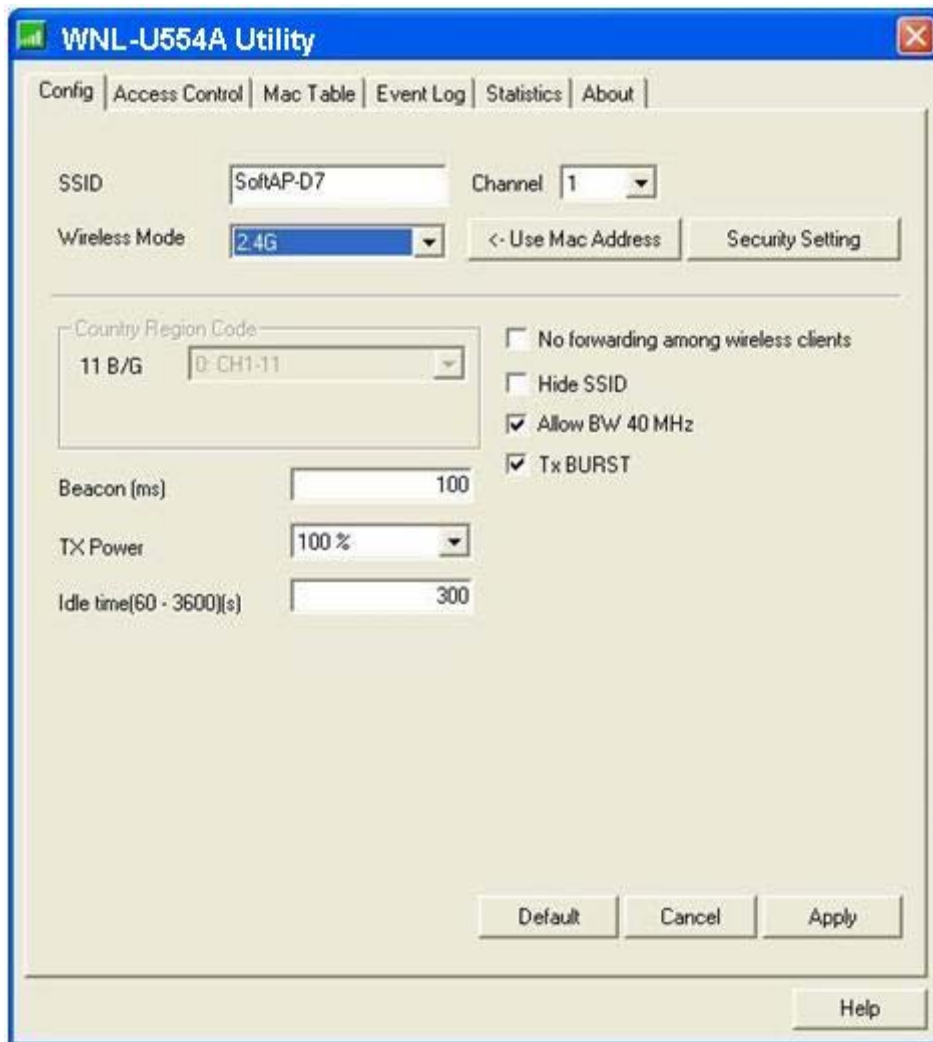
If you want to switch the wireless card back to station mode (become a client of other wireless access points), click 'Switch to Station Mode'.



A configuration window will appear after you switch the operation mode to 'AP' or click 'Launch Config Utilities' after you right-click the WNL-U554A configuration utility, which asks you to assign an existing network card with internet connection:

Enabling ICS. Please wait...

, you'll see the basic configuration menu of the AP function:



Parameter	Description
SSID	Please input the SSID (the name used to identify this wireless access point) here. Up to 32 numerical characters can be accepted here, excepting space.
Channel	Please select the wireless channel you wish to use. The number of channels available here will vary depends on the setting of 'Country Region Code'.
Wireless Mode	Please select the wireless operating mode. You can limit the type of wireless client to 802.11b or 802.11g only, or allow 802.11b/g, and 802.11b/g/n clients. It's safe to select '802.11 B/G/N mix' to allow all kinds of wireless client to connect to your computer, unless you want to limit the type of wireless client allowed to connect to your computer.
Use MAC Address	Click this button to use the MAC address of the wireless card as SSID. A prefix of 'AP' will be added.
Security Setting	Set the security options (wireless data encryption).

Country Region Code	<p>Available options are 0-7, which will affect the available wireless channels you can use:</p> <ul style="list-style-type: none"> 0: FCC (US, Canada, and other countries uses FCC radio communication standards) 1: ETSI (Europe) 2: SPAIN 3: FRANCE 4: MKK 5: MKKI (TELEC) 6: ISERAL (Channel 3 to 9) 7: ISERAL (Channel 5 to 13) <p>The operating frequency channel will be restricted to the country / region user located before importing</p>
Beacon (ms)	You can define the time interval that a beacon signal should be send. Default value is 100. Do not modify this value unless you know what will be affected
TX Power	You can select the wireless output power here. Please select a proper output power setting according to your actual needs. You may not need 100% of output power if other wireless clients are not far from you.
Idle Time	Select the idle time of your wireless network card. Default value is 300. Do not modify this value unless you know what will be affected
No forwarding among wireless clients	Check this box and wireless clients will not be able to share data with each other.
Hide SSID	Check this box and the SSID will not be broadcasted to the public. Your wireless clients must know the exact SSID to be able to connect to your computer. This option is useful to enhance security level.
Allow BW 40MHz	Check this box to allow BW 40MHz capability.
Default	Click this button to restore all settings in this page back to default value.
Tx BURST	Check this box to accelerate the data transmit rate. It may not work with all wireless access point and wireless devices.

To save changes, click 'Apply' button. Or you can click 'Default' to reset all values to factory default value.

4-2 Security Settings

This wireless card supports wireless encryption in AP mode, which will encrypt the data being transferred over the air to enhance data security level. It's recommended to enable data encryption unless you wish to open your computer (and its internet connection) to the public.

When you click 'Security Setting' in WNL-U554A configuration utility, the following window will appear:

Parameter	Description
Authentication Type	Please select a wireless authentication type you wish to use. Available options are 'Open', 'Shared', 'WPA-PSK', 'WPA2-PSK', and 'WPA-PSK / WPA2-PSK'. If you want to disable wireless data encryption, you must select 'Open' or 'Shared'.
Encryption Type	Please select an encryption mode. The available options in this setting item will vary depending on the authentication type you select. If you select 'Not Use', data will not be encrypted and people with some networking knowledge will be able to read the data you transfer with proper tool. NOTE: WPA encryption is safer than WEP, however, some older wireless clients don't support WPA encryption.

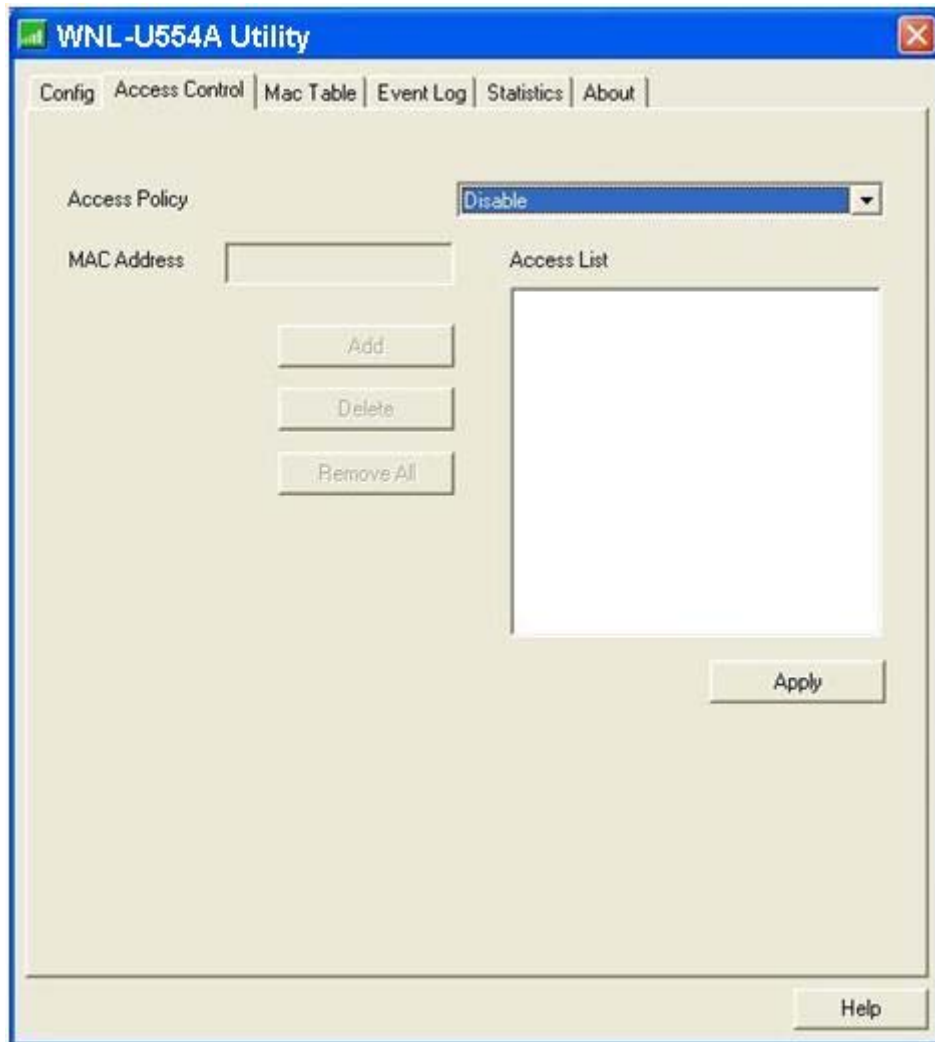
WPA Pre-shared-key	Please input the WPA pre-shared key here. Only clients with the same pre-shared key you inputted here will be able to connect to your computer. This setting is only available when you select one of WPA encryptions.
Group Rekey Interval	You can specify the time interval to re-issue the key to your wireless clients here. You can click the button '10 seconds' or 'Kpackets' to change the unit of time interval. (every 10 seconds or a thousand data packets times the value you specified in 'Group Rekey Interval' field)
WEP Key #1-4	Please input the WEP encryption key here when you select " If you want to use WEP 64 bits encryption, please input 10 characters if you select HEX, or input 5 characters if you select ASCII; If you want to use WEP 128bits encryption, please input 26 characters if you select HEX, or input 13 characters if you select ASCII. 128 bits encryption is safer than 64 bits, but the data transfer speed will be slightly reduced.
Show Password	Check this box and the WPA pre-shared key or WEP key you inputted will be shown, but not replaced by asterisk (*).

When you finish with setting and want to save changes, click 'OK' button, or click 'Cancel' button to discard all changes you made.

4-3 Access Control

If you're not going to open your computer and wireless resources to the public, you can use MAC address filtering function to enforce your access control policy, so only wireless clients with MAC address you defined by this function can be connected to your software access point.

Click 'Access Control' tab, and the following messages will appear:



Parameter	Description
Access Policy	Select the policy type of your access rule: Disable: Allow any wireless client with proper authentication settings to connect to this access point. Allow All: Only allow wireless clients with MAC address listed here to connect to this access point. Reject All: Reject wireless clients with MAC address listed here to be connected to this access point.
MAC Address	Input the MAC address of the wireless client you wish to allow or reject here. No colon (:) or hyphen (-) required.
Add	Add the MAC address you inputted in 'MAC address' field to the list.
Delete	Please select a MAC address from the list, then click 'Delete' button to remove it.
Remove all	Delete all MAC addresses in the list.

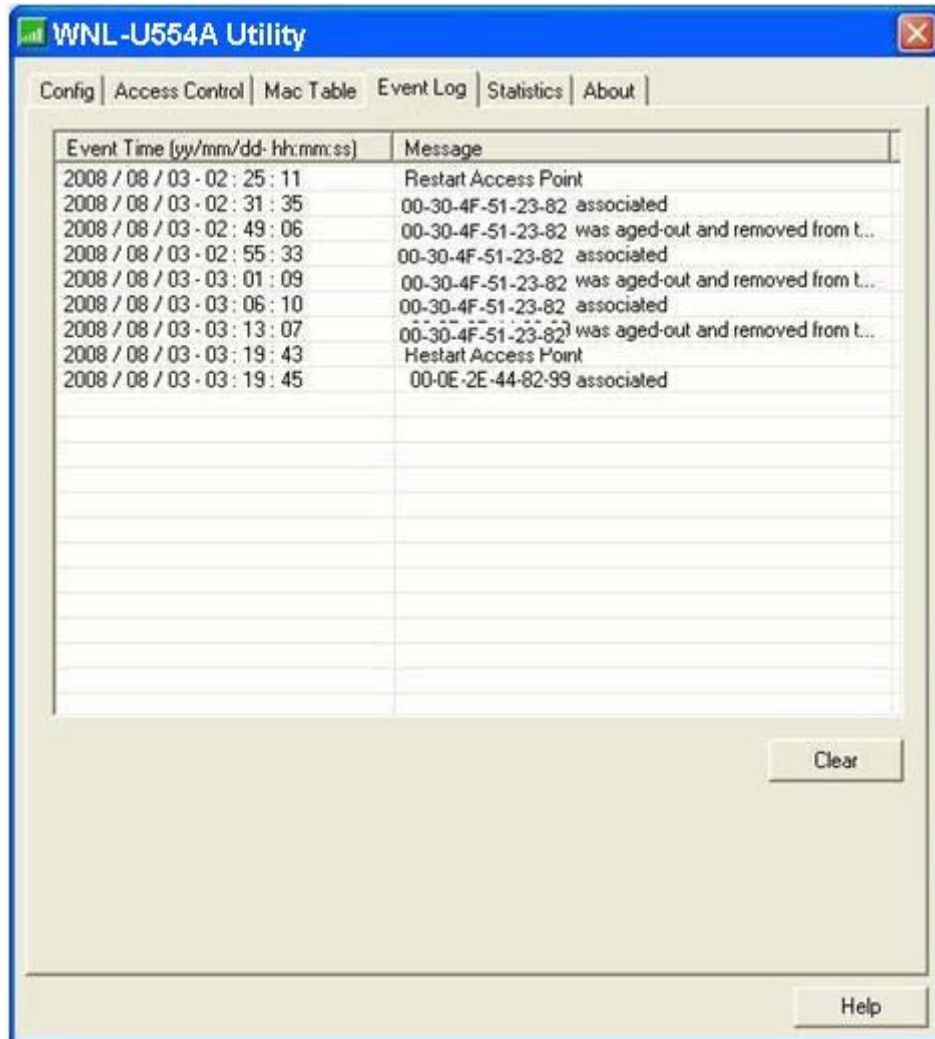
When you finish with setting and want to save changes, click 'Apply' button.

Parameter	Description
MAC address	Displays the MAC address of this wireless client
AID	The serial number of this wireless connection.
Power Saving Mode	Displays the capability of power-saving function of this wireless client.
Status	Displays additional information of this wireless Connection, like current wireless operating mode and data transfer rate.

4-5 Event Log

This software access point will log all wireless-related activities as a log. You can follow the following instructions to view the content of the event log:

Click 'Event Log' tab, and the event log will be displayed:

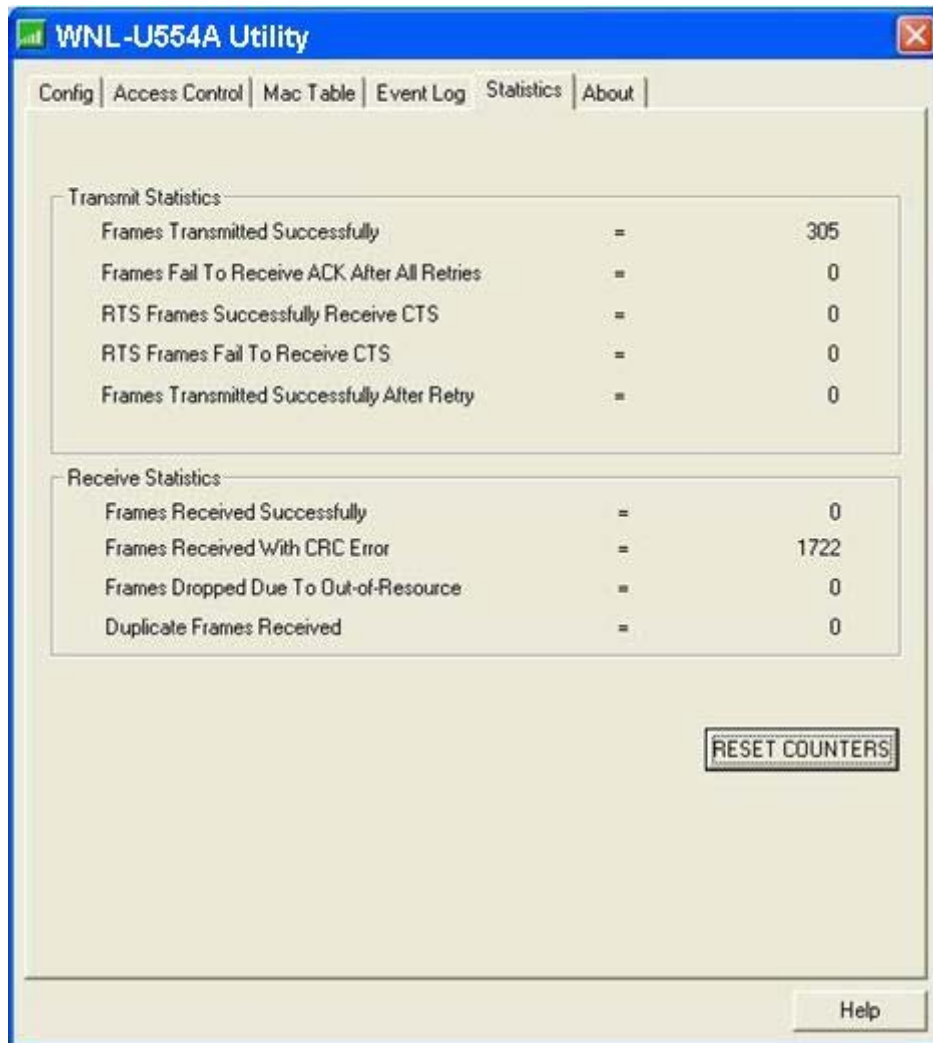


You can click 'Clear' to remove all entries in the log.

4-6 Statistics

If you want to know detailed information about how your software access point works, you can follow the following instructions to view the statistics of the access point:

Click 'Statistics' tab, and the event log will be displayed:



You can click 'RESET COUNTERS' button to reset all counters to zero.

4-7 About

The 'About' tab provides you the information about version number of the configuration utility, driver, and other important information about your wireless access point.



CHAPTER 5: APPENDIX

5-1 Troubleshooting

This chapter provides solutions to problems usually encountered during the installation and operation of the adapter.

Q. The PLANET WNL-U554A does not work properly.

A.

1. Right click on My Computer and select Properties. Select the device manager and click on the Network Adapter. You will find the Adapter if it is installed successfully. If you see the yellow exclamation mark, the resources are conflicting. You will see the status of the Adapter. If there is a yellow question mark, please check the following:
2. Make sure that your PC has a free IRQ (Interrupt Request, a hardware interrupt on a PC.)
3. Make sure that you have inserted the right adapter and installed the proper driver. If the Adapter does not function after attempting the above steps, remove the adapter and do the following:
4. Uninstall the driver software from your PC.
5. Restart your PC and repeat the hardware and software installation as specified in this User Guide.

Q. I cannot communicate with the other computers linked via Ethernet in the Infrastructure configuration.

A.

1. Make sure that the PC to which the Adapter is associated is powered on.
2. Make sure that your Adapter is configured on the same channel and with the same security options as with the other computers in the Infrastructure configuration.

Q. What should I do when the computer with the Adapter installed is unable to connect to the wireless network and/or the Internet?

A.

1. Check that the LED indicators for the broadband modem are indicating normal activity. If not, there may be a problem with the broadband connection.
2. Check that the IP address, subnet mask, gateway, and DNS settings are correctly entered for the network.
3. In Infrastructure mode, make sure the same Service Set Identifier (SSID) is specified on the settings for the wireless clients and access points.

4. In Ad-Hoc mode, both wireless clients will need to have the same SSID. Please note that it might be necessary to set up one client to establish a BSS (Basic Service Set) and wait briefly before setting up other clients. This prevents several clients from trying to establish a BSS at the same time, which can result in multiple singular BSSs being established, rather than a single BSS with multiple clients associated to it.
5. Check that the Network Connection for the wireless client is configured properly.
6. If Security is enabled, make sure that the correct encryption keys are entered on both the Adapter and the access point.

Q. I can't find any wireless access point / wireless device in 'Site Survey' function.

A.

1. Click 'Rescan' for few more times and see if you can find any wireless access point or wireless device.
2. Please move closer to any known wireless access point.
3. 'Ad hoc' function must be enabled for the wireless device you wish to establish a direct wireless link.
4. Please adjust the position of network card (you may have to move your computer if you're using a notebook computer) and click 'Rescan' button for few more times. If you can find the wireless access point or wireless device you want to connect by doing this, try to move closer to the place where the wireless access point or wireless device is located.

Q. Nothing happens when I click 'Launch config utilities'

A.

1. Please make sure the wireless network card is firmly inserted into your computer's USB port. If the Planet configuration utility's icon is black, the network card is not detected by your computer. Switch the computer off and insert the adapter again. If this doesn't work, contact the dealer of purchase for help.
2. Reboot the computer and try again.
3. Remove the driver and re-install.
4. Contact the dealer of purchase for help.

Q. I can not establish connection with a certain wireless access point

A.

1. Click 'Connect' for few more times.
2. If the SSID of access point you wish to connect is hidden (nothing displayed in 'SSID' field in 'Site Survey' function), you have to input correct SSID of the access point you wish to connect. Please contact the owner of access point to ask for correct SSID.
3. You have to input correct passphrase / security key to connect an access point with encryption. Please contact the owner of access point to ask for correct passphrase / security key.

4. The access point you wish to connect only allows network cards with specific MAC address to establish connection. Please go to 'About' tab and write the value of 'Phy_Address' down, then present this value to the owner of access point so he / she can add the MAC address of your network card to his / her access point's list.

Q. The network is slow / having problem when transferring large files

A.

1. Move closer to the place where access point is located.
2. Enable 'Wireless Protection' in 'Advanced' tab.
3. Try a lower TX Rate in 'Advanced' tab.
4. Disable 'Tx Burst' in 'Advanced' tab.
5. Enable 'WMM' in 'QoS' tab if you need to use multimedia / telephony related applications.
6. Disable 'WMM – Power Save Enable' in 'QoS' tab.
7. There could be too much people using the same radio channel. Ask the owner of the access point to change the channel number.

5-2 Glossary

1. What is WMM?

Wi-Fi Multimedia (WMM), a group of features for wireless networks that improve the user experience for audio, video and voice applications. WMM is based on a subset of the IEEE 802.11e WLAN QoS draft standard. WMM adds prioritized capabilities to Wi-Fi networks and optimizes their performance when multiple concurring applications, each with different latency and throughput requirements, compete for network resources. By using WMM, end-user satisfaction is maintained in a wider variety of environments and traffic conditions. WMM makes it possible for home network users and enterprise network managers to decide which data streams are most important and assign them a higher traffic priority.

2. What is WMM Power Save?

WMM Power Save is a set of features for Wi-Fi networks that increase the efficiency and flexibility of data transmission in order to conserve power. WMM Power Save has been optimized for mobile devices running latency-sensitive applications such as voice, audio, or video, but can benefit any Wi-Fi device. WMM Power Save uses mechanisms included in the IEEE 802.11e standard and is an enhancement of IEEE 802.11 legacy power saves. With WMM Power Save, the same amount of data can be transmitted in a shorter time while allowing the Wi-Fi device to remain longer in a low-power "dozing" state.

3. What is GI?

GI stands for Guard Interval. It's a measure to protect wireless devices from cross-interference. If there are two wireless devices using the same or near channel, and they are close enough, radio interference will occur and reduce the radio resource usability.

4. What is STBC?

STBC stands for Space-Time Block Coding, which is a technique used to transfer multiple copies of data by multiple antenna, to improve data transfer performance. By using multiple antennas, not only data transfer rate is improved, but also the wireless stability.



EC Declaration of Conformity

For the following equipment:

*Type of Product : 802.11n Wireless USB Adapter
*Model Number : WNL-U554A

* Produced by:

Manufacturer's Name : **Planet Technology Corp.**
Manufacturer's Address: 11F, No 96, Min Chuan Road,
Hsin Tien, Taipei, Taiwan, R.O.C.

is herewith confirmed to comply with the requirements set out in the Council Directive on the Approximation of the Laws of the Member States relating to 1999/5/EC R&TTE.

For the evaluation regarding the R&TTE the following standards were applied:

EN 300 328 V1.7.1	(2006-05)
EN 301 489-17 V1.2.1	(2002-08)
EN60950-1	(2001 + A11: 2004)
EN50371	(2002)

Responsible for marking this declaration if the:

Manufacturer **Authorized representative established within the EU**

Authorized representative established within the EU (if applicable):

Company Name: Planet Technology Corp.

Company Address: 11F, No.96, Min Chuan Road, Hsin Tien, Taipei, Taiwan, R.O.C

Person responsible for making this declaration

Name, Surname Tom Shih

Position / Title : Product Manager

Taiwan
Place

17th Nov., 2008
Date


Legal Signature

PLANET TECHNOLOGY CORPORATION